

For Research Use Only

MRPL39 Polyclonal antibody

Catalog Number: 28165-1-AP

3 Publications



Basic Information

Catalog Number:

28165-1-AP

Size:

450 µg/ml

Source:

Rabbit

Isotype:

IgG

Immunogen Catalog Number:

AG27154

GenBank Accession Number:

BC107719

GeneID (NCBI):

54148

UNIPROT ID:

Q9NYK5

Full Name:

mitochondrial ribosomal protein L39

Calculated MW:

338 aa, 39 kDa

Observed MW:

35-40 kDa

Purification Method:

Antigen affinity purification

Recommended Dilutions:

WB 1:1000-1:6000

IHC 1:50-1:500

IF 1:50-1:500

Applications

Tested Applications:

IF/ICC, IHC, WB, ELISA

Cited Applications:

WB

Species Specificity:

Human, Mouse, Rat

Cited Species:

human

Note-IHC: suggested antigen retrieval with TE buffer pH 9.0; (*) Alternatively, antigen retrieval may be performed with citrate buffer pH 6.0

Positive Controls:

WB : HepG2 cells, mouse heart tissue, mouse testis tissue, rat testis tissue

IHC : human liver tissue,

IF : HepG2 cells,

Background Information

Notable Publications

Author	Pubmed ID	Journal	Application
Xujun Liu	34728602	Signal Transduct Target Ther	WB
Shabnam Bakhshalizadeh	37148394	Hum Genet	WB
Sumudu S C Amarasekera	37133451	Hum Mol Genet	WB

Storage

Storage:

Store at -20°C. Stable for one year after shipment.

Storage Buffer:

PBS with 0.02% sodium azide and 50% glycerol pH 7.3.

Aliquoting is unnecessary for -20°C storage

For technical support and original validation data for this product please contact:

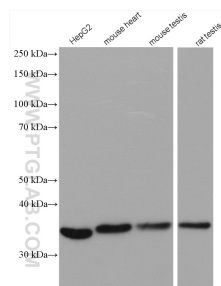
T: 4006900926

E: Proteintech-CN@ptglab.com

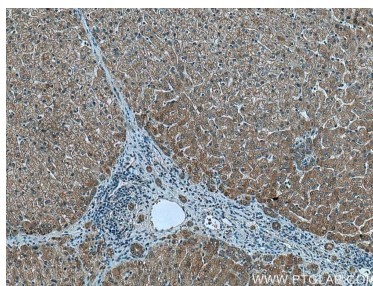
W: ptgcn.com

This product is exclusively available under Proteintech Group brand and is not available to purchase from any other manufacturer.

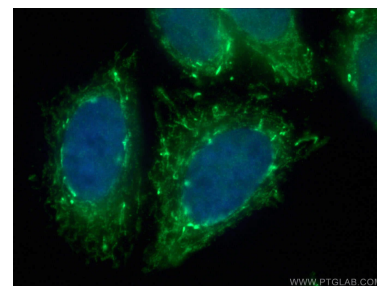
Selected Validation Data



Various lysates were subjected to SDS PAGE followed by western blot with 28165-1-AP (MRPL39 antibody) at dilution of 1:3000 incubated at room temperature for 1.5 hours.



Immunohistochemical analysis of paraffin-embedded human liver tissue slide using 28165-1-AP (MRPL39 antibody) at dilution of 1:200 (under 10x lens). Heat mediated antigen retrieval with Tris-EDTA buffer (pH 9.0).



Immunofluorescent analysis of (4% PFA) fixed HepG2 cells using 28165-1-AP (MRPL39 antibody) at dilution of 1:50 and Alexa Fluor 488-Conjugated AffiniPure Goat Anti-Rabbit IgG(H+L).