

For Research Use Only

# GCH1 Polyclonal antibody

Catalog Number: 28501-1-AP **5 Publications**



## Basic Information

<b>Catalog Number:</b> 28501-1-AP	<b>GenBank Accession Number:</b> BC025415	<b>Purification Method:</b> Antigen affinity purification
<b>Size:</b> 650 µg/ml	<b>GeneID (NCBI):</b> 2643	<b>Recommended Dilutions:</b> WB 1:1000-1:6000 IHC 1:200-1:800
<b>Source:</b> Rabbit	<b>UNIPROT ID:</b> P30793	
<b>Isotype:</b> IgG	<b>Full Name:</b> GTP cyclohydrolase 1	
<b>Immunogen Catalog Number:</b> AG28896	<b>Calculated MW:</b> 28 kDa	
	<b>Observed MW:</b> 30-35 kDa	

## Applications

<b>Tested Applications:</b> IHC, WB, ELISA	<b>Positive Controls:</b> WB : HEK-293 cells, mouse liver tissue, rat liver tissue IHC : rat liver tissue, mouse liver tissue
<b>Cited Applications:</b> IF, WB	
<b>Species Specificity:</b> Human, mouse, rat	
<b>Cited Species:</b> human, mouse	
<b>Note-IHC: suggested antigen retrieval with TE buffer pH 9.0; (*) Alternatively, antigen retrieval may be performed with citrate buffer pH 6.0</b>	

## Background Information

### Notable Publications

Author	Pubmed ID	Journal	Application
Jiujian Zheng	36196723	Eur Rev Med Pharmacol Sci	WB
Dong Liu	36627132	Adv Sci (Weinh)	WB
Tanxiu Chen	36572150	Virol Sin	WB,IF

## Storage

**Storage:**  
Store at -20°C. Stable for one year after shipment.  
**Storage Buffer:**  
PBS with 0.02% sodium azide and 50% glycerol pH 7.3.  
Aliquoting is unnecessary for -20°C storage

For technical support and original validation data for this product please contact:

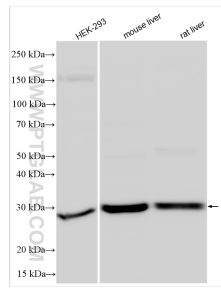
T: 4006900926

E: Proteintech-CN@ptglab.com

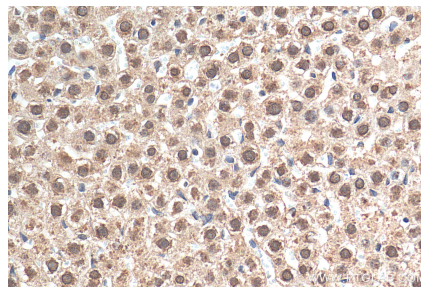
W: ptgcn.com

**This product is exclusively available under Proteintech Group brand and is not available to purchase from any other manufacturer.**

## Selected Validation Data



Various lysates were subjected to SDS PAGE followed by western blot with 28501-1-AP (GCH1 antibody) at dilution of 1:3000 incubated at room temperature for 1.5 hours.



Immunohistochemical analysis of paraffin-embedded rat liver tissue slide using 28501-1-AP (GCH1 antibody) at dilution of 1:400 (under 40x lens). Heat mediated antigen retrieval with Tris-EDTA buffer (pH 9.0).