

For Research Use Only

# Claudin 1 Polyclonal antibody

Catalog Number: 28674-1-AP **75 Publications**



## Basic Information

<b>Catalog Number:</b> 28674-1-AP	<b>GenBank Accession Number:</b> BC012471	<b>Purification Method:</b> Antigen affinity purification
<b>Size:</b> 550 µg/ml	<b>GeneID (NCBI):</b> 9076	<b>Recommended Dilutions:</b> WB 1:1000-1:6000 IHC 1:50-1:500 IF 1:200-1:800
<b>Source:</b> Rabbit	<b>UNIPROT ID:</b> O95832	
<b>Isotype:</b> IgG	<b>Full Name:</b> claudin 1	
<b>Immunogen Catalog Number:</b> AG29269	<b>Calculated MW:</b> 211 aa, 23 kDa <b>Observed MW:</b> 20-23 kDa	

## Applications

<b>Tested Applications:</b> IF/ICC, IHC, WB, ELISA	<b>Positive Controls:</b> WB : A431 cells, mouse skin tissue, rat skin tissue, HepG2 cells IHC : human skin cancer tissue, mouse skin tissue IF : HUVEC cells,
<b>Cited Applications:</b> WB, IF, IHC	
<b>Species Specificity:</b> Human, Mouse, Rat	
<b>Cited Species:</b> human, rat, sheep, mouse, pig, canine	
<b>Note-IHC: suggested antigen retrieval with TE buffer pH 9.0; (*) Alternatively, antigen retrieval may be performed with citrate buffer pH 6.0</b>	

## Background Information

Claudins are a family of proteins that are the most important components of the tight junctions, where they establish the paracellular barrier that controls the flow of molecules in the intercellular space between the cells of an epithelium. They are small (20-27 kilodalton (kDa)) proteins with very similar structure. They have four transmembrane domains, with the N-terminus and the C-terminus in the cytoplasm. Claudin-1 is expressed primarily in keratinocytes and normal mammary epithelial cells.

## Notable Publications

Author	Pubmed ID	Journal	Application
Yingying Wang	36174863	Int J Biol Macromol	WB,IF
Zhen-Xing Wang	36235602	Nutrients	WB
Jianping Li	36240652	Biochem Biophys Res Commun	WB

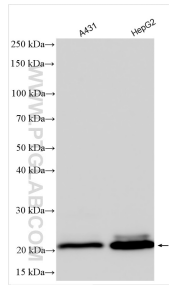
## Storage

**Storage:**  
Store at -20°C. Stable for one year after shipment.  
**Storage Buffer:**  
PBS with 0.02% sodium azide and 50% glycerol pH 7.3.  
Aliquoting is unnecessary for -20°C storage

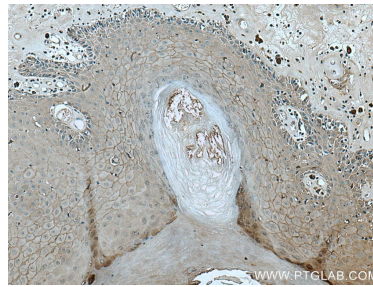
For technical support and original validation data for this product please contact:  
T: 4006900926 E: Proteintech-CN@ptglab.com W: ptgcn.com

**This product is exclusively available under Proteintech Group brand and is not available to purchase from any other manufacturer.**

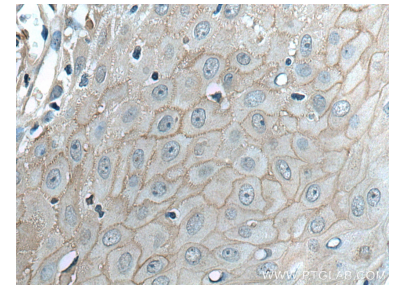
## Selected Validation Data



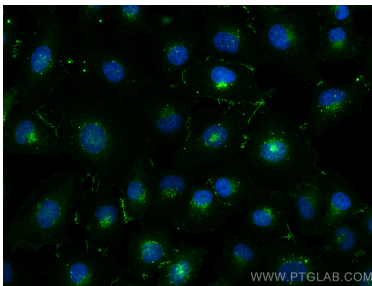
Various lysates were subjected to SDS PAGE followed by western blot with 28674-1-AP (Claudin 1 antibody) at dilution of 1:3000 incubated at room temperature for 1.5 hours.



Immunohistochemical analysis of paraffin-embedded human skin cancer tissue slide using 28674-1-AP (Claudin 1 antibody) at dilution of 1:200 (under 10x lens). Heat mediated antigen retrieval with Tris-EDTA buffer (pH 9.0).



Immunohistochemical analysis of paraffin-embedded human skin cancer tissue slide using 28674-1-AP (Claudin 1 antibody) at dilution of 1:200 (under 40x lens). Heat mediated antigen retrieval with Tris-EDTA buffer (pH 9.0).



Immunofluorescent analysis of (4% PFA) fixed HUVEC cells using Claudin 1 antibody (28674-1-AP) at dilution of 1:400 and CoraLite®488-Conjugated AffiniPure Goat Anti-Rabbit IgG(H+L).