

For Research Use Only

# SLC25A6 Polyclonal antibody

Catalog Number: 51031-1-AP

2 Publications



## Basic Information

Catalog Number:

51031-1-AP

Concentration:

450 ug/ml

Source:

Rabbit

Isotype:

IgG

GenBank Accession Number:

BC031912

GeneID (NCBI):

293

UNIPROT ID:

P12236

Full Name:

solute carrier family 25  
(mitochondrial carrier; adenine  
nucleotide translocator), member 6

Calculated MW:

33 kDa

Observed MW:

30-33 kDa

Purification Method:

Antigen affinity purification

Recommended Dilutions:

WB 1:500-1:1000

IHC 1:50-1:500

## Applications

Tested Applications:

WB, IHC, ELISA

Cited Applications:

WB

Species Specificity:

human, mouse

Cited Species:

human

**Note-IHC: suggested antigen retrieval with  
TE buffer pH 9.0; (\*) Alternatively, antigen  
retrieval may be performed with citrate  
buffer pH 6.0**

Positive Controls:

WB : Jurkat cells, HEK-293 cells, K-562 cells, NCI-H1299  
cells

IHC : human lung cancer tissue, mouse liver tissue

## Background Information

SLC25A6, also known as ANT3 (adenine nucleotide translocase 3), is a member of the solute carrier family 25, specifically the mitochondrial carrier subfamily. As part of the mitochondrial carrier family, SLC25A6 plays a role in the mitochondrial energy production process by facilitating the exchange of metabolites necessary for oxidative phosphorylation (PMID: 23506884).

## Notable Publications

Author	Pubmed ID	Journal	Application
Mohamed E M Saeed	30066889	Int J Oncol	
Izabela Bednarska	39105088	MethodsX	WB

## Storage

Storage:

Store at -20°C. Stable for one year after shipment.

Storage Buffer:

PBS with 0.02% sodium azide and 50% glycerol pH 7.3.

Aliquoting is unnecessary for -20°C storage

For technical support and original validation data for this product please contact:

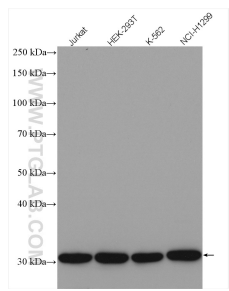
T: 4006900926

E: [Proteintech-CN@ptglab.com](mailto:Proteintech-CN@ptglab.com)

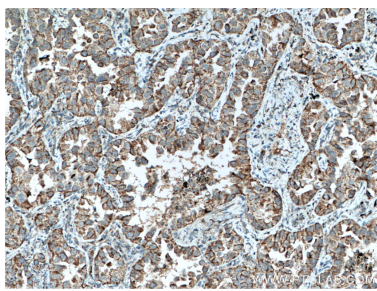
W: [ptgcn.com](http://ptgcn.com)

**This product is exclusively available under Proteintech Group brand and is not available to purchase from any other manufacturer.**

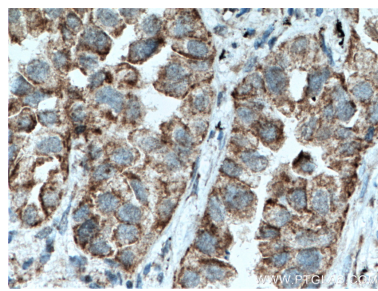
## Selected Validation Data



Various lysates were subjected to SDS PAGE followed by western blot with 51031-1-AP (SLC25A6 antibody) at dilution of 1:800 incubated at room temperature for 1.5 hours.



Immunohistochemical analysis of paraffin-embedded human lung cancer tissue slide using 51031-1-AP (SLC25A6 antibody) at dilution of 1:200 (under 10x lens. Heat mediated antigen retrieval with Tris-EDTA buffer (pH 9.0).



Immunohistochemical analysis of paraffin-embedded human lung cancer tissue slide using 51031-1-AP (SLC25A6 antibody) at dilution of 1:200 (under 40x lens. Heat mediated antigen retrieval with Tris-EDTA buffer (pH 9.0).