

For Research Use Only

Cyclin B1 Polyclonal antibody

Catalog Number: 55004-1-AP

Featured Product

275 Publications



Basic Information

Catalog Number:

55004-1-AP

Concentration:

500 ug/ml

Source:

Rabbit

Isotype:

IgG

GenBank Accession Number:

NM_031966

GeneID (NCBI):

891

UNIPROT ID:

P14635

Full Name:

cyclin B1

Calculated MW:

48 kDa

Observed MW:

55-60 kDa

Purification Method:

Antigen affinity purification

Recommended Dilutions:

WB: 1:1000-1:4000

IP: 0.5-4.0 ug for 1.0-3.0 mg of total protein lysate

IHC: 1:200-1:800

IF/ICC: 1:200-1:800

FC (Intra): 0.40 ug per 10⁶ cells in a 100 µl suspension

Applications

Tested Applications:

WB, IF/ICC, FC (Intra), IP, ELISA

Cited Applications:

WB, IF, IP, ColP

Species Specificity:

human, mouse

Cited Species:

human, mouse, rat, pig, bovine, sheep

Note-IHC: suggested antigen retrieval with TE buffer pH 9.0; (*) Alternatively, antigen retrieval may be performed with citrate buffer pH 6.0

Positive Controls:

WB : HeLa cells, HepG2 cells, PC-3 cells, Jurkat cells, K-562 cells

IP : HeLa cells,

IHC : human skin cancer tissue,

IF/ICC : HeLa cells, U2OS cells

FC (Intra) : HeLa cells,

Background Information

Cyclin B1 is a regulatory protein involved in mitosis. The gene product complexes with p34(cdc2) to form the maturation-promoting factor (MPF). Two alternative transcripts have been found, a constitutively expressed transcript and a cell cycle-regulated transcript, that is expressed predominantly during G2/M phase of the cell cycle. The different transcripts result from the use of alternate transcription initiation sites. The antibody is specific to CCNB1. We got a 55-60 kDa band in western blotting maybe due to phosphorylation.

Notable Publications

Author	Pubmed ID	Journal	Application
Zijian Zhang	34593753	Cell Death Dis	WB
Xiaoman Chen	30207732	Mol Pharm	WB
Hui-Ting Liu	34667869	Laryngoscope Investig Otolaryngol	WB

Storage

Storage:

Store at -20°C. Stable for one year after shipment.

Storage Buffer:

PBS with 0.02% sodium azide and 50% glycerol, pH7.3

Aliquoting is unnecessary for -20°C storage

For technical support and original validation data for this product please contact:

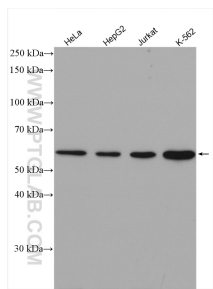
T: 4006900926

E: Proteintech-CN@ptglab.com

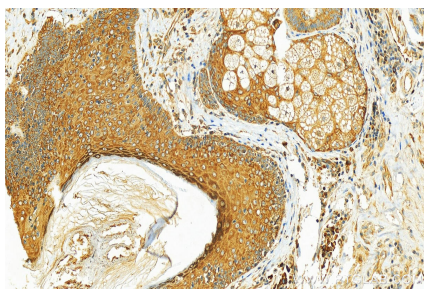
W: ptgcn.com

This product is exclusively available under Proteintech Group brand and is not available to purchase from any other manufacturer.

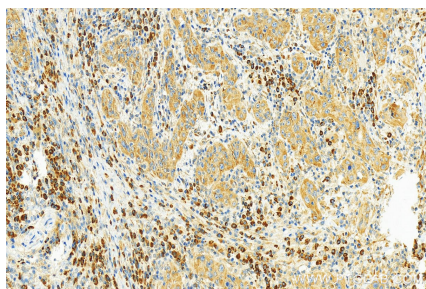
Selected Validation Data



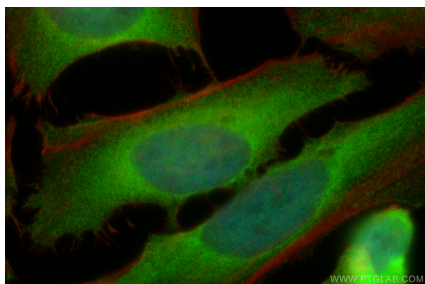
Various lysates were subjected to SDS PAGE followed by western blot with 55004-1-AP (Cyclin B1 antibody) at dilution of 1:2000 incubated at room temperature for 1.5 hours.



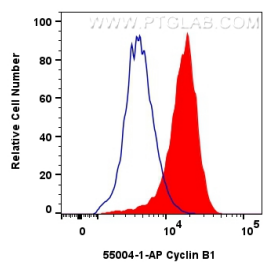
Immunohistochemical analysis of paraffin-embedded skin cancer slide using 55004-1-AP (Cyclin B1 antibody) at dilution of 1:400 (under 20x lens). Heat mediated antigen retrieval with Tris-EDTA buffer (pH 9.0).



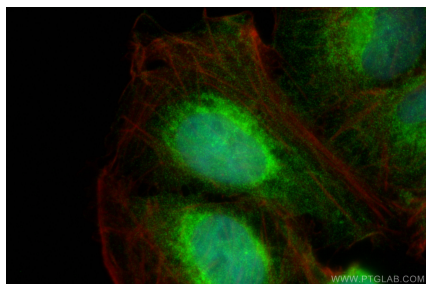
Immunohistochemical analysis of paraffin-embedded skin cancer slide using 55004-1-AP (Cyclin B1 antibody) at dilution of 1:400 (under 20x lens). Heat mediated antigen retrieval with Tris-EDTA buffer (pH 9.0).



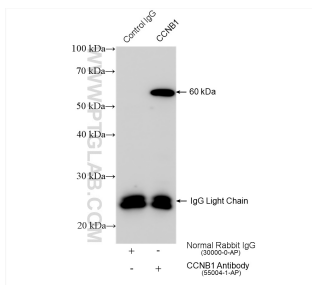
Immunofluorescent analysis of (4% PFA) fixed HeLa cells using Cyclin B1 antibody (55004-1-AP) at dilution of 1:400 and CoraLite®488-Conjugated AffiniPure Goat Anti-Rabbit IgG(H+L), CL594-phalloidin (red).



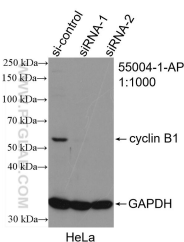
1x10⁶ HeLa cells were intracellularly stained with 0.4 ug Cyclin B1 Polyclonal antibody (55004-1-AP) (red), or 0.4 ug Rabbit IgG control Rabbit PolyAb (30000-O-AP) (blue). Cells were fixed and permeabilized with Transcription Factor Staining Buffer Kit (PF00011).



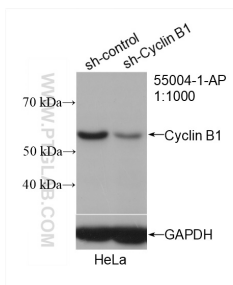
Immunofluorescent analysis of (4% PFA) fixed U2OS cells using Cyclin B1 antibody (55004-1-AP) at dilution of 1:400 and CoraLite®488-Conjugated AffiniPure Goat Anti-Rabbit IgG(H+L), CL594-phalloidin (red).



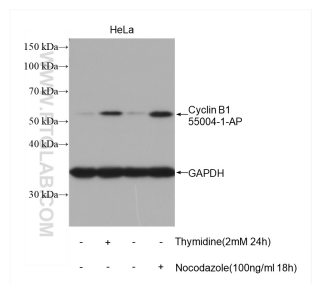
IP result of anti-Cyclin B1 (IP:55004-1-AP, 4ug; Detection:55004-1-AP 1:2000) with HeLa cells lysate 1560 ug.



WB result of Cyclin B1 antibody (55004-1-AP; 1:1000; incubated at room temperature for 1.5 hours) with sh-Control and sh-Cyclin B1 transfected HeLa cells.



WB result of Cyclin B1 antibody (55004-1-AP; 1:1000; incubated at room temperature for 1.5 hours) with sh-Control and sh-Cyclin B1 transfected HeLa cells.



WB result of Cyclin B1 antibody (55004-1-AP; 1:1000; incubated at room temperature for 1.5 hours) with sh-Control and sh-Cyclin B1 transfected HeLa cells.

Non-treated HeLa and thymidine or nocodazole treated HeLa cells were subjected to SDS PAGE followed by western blot with 55004-1-AP (Cyclin B1 antibody) at dilution of 1:2000 incubated at room temperature for 1.5 hours. The membrane was stripped and re-blotted with GAPDH antibody as loading control.