

CDC25A Polyclonal antibody

Catalog Number: 55031-1-AP

Featured Product

28 Publications

Basic Information

Catalog Number:

55031-1-AP

Size:

600 µg/ml

Source:

Rabbit

Isotype:

IgG

GenBank Accession Number:

NM_001789

GeneID (NCBI):

993

UNIPROT ID:

P30304

Full Name:

cell division cycle 25 homolog A (S. pombe)

Calculated MW:

59 kDa

Observed MW:

60 kDa

Purification Method:

Antigen affinity purification

Recommended Dilutions:

WB 1:500-1:3000

IP 0.5-4.0 µg for 1.0-3.0 mg of total protein lysate

IHC 1:50-1:500

IF 1:50-1:500

Applications

Tested Applications:

IF/ICC, IHC, IP, WB, ELISA

Cited Applications:

WB, IP, IF, IHC

Species Specificity:

human, mouse

Cited Species:

human, mouse

Note-IHC: suggested antigen retrieval with TE buffer pH 9.0; (*) Alternatively, antigen retrieval may be performed with citrate buffer pH 6.0

Positive Controls:

WB : HepG2 cells, mouse liver tissue

IP : HeLa cells,

IHC : human breast cancer tissue, human gliomas tissue

IF : human breast cancer tissue,

Background Information

CDC25A belongs to the MPI phosphatase family. It is a tyrosine protein phosphatase which functions as a dosage-dependent inducer of mitotic progression. CDC25A directly dephosphorylates CDC2 and stimulates its kinase activity. It also dephosphorylates CDK2 in complex with cyclin E, in vitro. CDC25A overexpression in human cancers might contribute to tumorigenesis. This protein can be phosphorylated to reveal the molecular weight from 55 kDa to 70 kDa (PMID:21376736; 8156993). The antibody is specific to CDC25A.

Notable Publications

Author	Pubmed ID	Journal	Application
Hang Li	32943060	Cell Commun Signal	WB, IHC
Yonglong Zhang	31599189	Cell Cycle	WB
Jinliang Wu	27880067	Cell Cycle	WB

Storage

Storage:

Store at -20°C. Stable for one year after shipment.

Storage Buffer:

0.1M NaHCO₃, 0.1M glycine, 0.02% sodium azide and 50% glycerol pH 7.3.

Aliquoting is unnecessary for -20°C storage

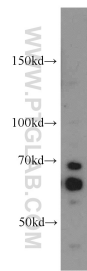
For technical support and original validation data for this product please contact:

T: 4006900926

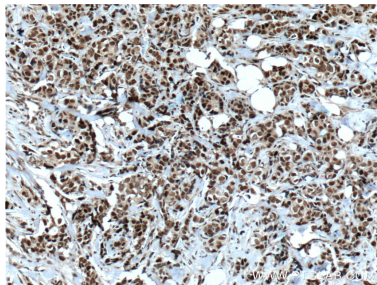
E: Proteintech-CN@ptglab.comW: ptgcn.com

This product is exclusively available under Proteintech Group brand and is not available to purchase from any other manufacturer.

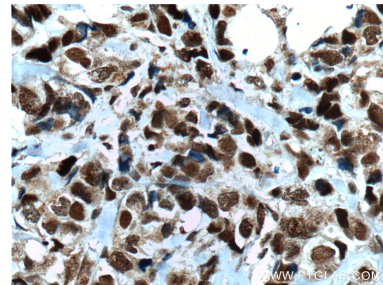
Selected Validation Data



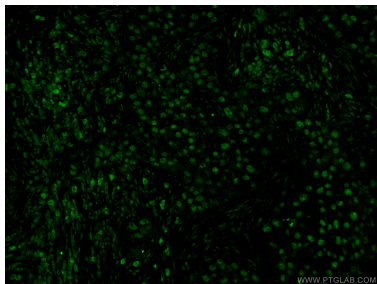
HepG2 cells were subjected to SDS PAGE followed by western blot with 55031-1-AP (CDC25A antibody) at dilution of 1:1500 incubated at room temperature for 1.5 hours.



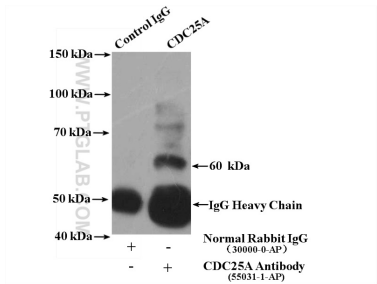
Immunohistochemical analysis of paraffin-embedded human breast cancer tissue slide using 55031-1-AP (CDC25A Antibody) at dilution of 1:200 (under 10x lens). Heat mediated antigen retrieval with Tris-EDTA buffer (pH 9.0).



Immunohistochemical analysis of paraffin-embedded human breast cancer tissue slide using 55031-1-AP (CDC25A Antibody) at dilution of 1:200 (under 40x lens). Heat mediated antigen retrieval with Tris-EDTA buffer (pH 9.0).



Immunofluorescent analysis of (4% PFA) fixed human breast cancer tissue using 55031-1-AP (CDC25A antibody) at dilution of 1:50 and Alexa Fluor 488-conjugated AffiniPure Goat Anti-Rabbit IgG(H+L).



IP result of anti-CDC25A (IP:55031-1-AP, 4ug; Detection:55031-1-AP 1:300) with HeLa cells lysate 4000ug.