

For Research Use Only

# KIF15 Polyclonal antibody

Catalog Number: 55407-1-AP

Featured Product

21 Publications



## Basic Information

**Catalog Number:**

55407-1-AP

**Size:**

900 µg/ml

**Source:**

Rabbit

**Isotype:**

IgG

**GenBank Accession Number:**

NM\_020242

**GeneID (NCBI):**

56992

**UNIPROT ID:**

Q9NS87

**Full Name:**

kinesin family member 15

**Calculated MW:**

160 kDa

**Observed MW:**

150-165 kDa

**Purification Method:**

Antigen affinity purification

**Recommended Dilutions:**

WB 1:2000-1:10000

IP 0.5-4.0 µg for 1.0-3.0 mg of total protein lysate

IHC 1:20-1:200

IF 1:20-1:200

## Applications

**Tested Applications:**

IF/ICC, IHC, IP, WB, ELISA

**Cited Applications:**

IF, IHC, WB

**Species Specificity:**

human, mouse

**Cited Species:**

human, rat, mouse, zebrafish

**Note-IHC: suggested antigen retrieval with TE buffer pH 9.0; (\*) Alternatively, antigen retrieval may be performed with citrate buffer pH 6.0**

**Positive Controls:**

**WB:** Jurkat cells, mouse thymus tissue, HEK-293 cells, MDA-MB-453s cells

**IP:** mouse thymus tissue,

**IHC:** human testis tissue,

**IF:** HEK-293 cells,

## Background Information

KIF15, also named as KLP2 and KNLS7, belongs to the kinesin-like protein family and KLP2 subfamily. It is a plus-end directed kinesin-like motor enzyme which involved in mitotic spindle assembly. Several isoforms of KIF15 exist due to the alternative splicing, with molecular weight between 130-160 kDa. Sometimes higher molecular weight around 200 kDa can also be observed, which may be a modified variant of KIF15. (14618103)

## Notable Publications

Author	Pubmed ID	Journal	Application
Yanchao Ma	33011740	Cell Death Dis	IHC,WB,IF
Yuan Qiao	30439711	Cell Physiol Biochem	WB,IHC
Lin Gao	34804913	Front Oncol	WB,IHC

## Storage

**Storage:**

Store at -20°C. Stable for one year after shipment.

**Storage Buffer:**

PBS with 0.02% sodium azide and 50% glycerol pH 7.3.

Aliquoting is unnecessary for -20°C storage

For technical support and original validation data for this product please contact:

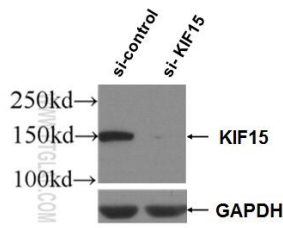
T: 4006900926

E: Proteintech-CN@ptglab.com

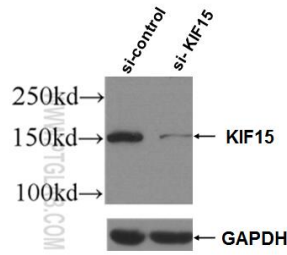
W: ptgcn.com

**This product is exclusively available under Proteintech Group brand and is not available to purchase from any other manufacturer.**

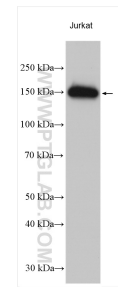
## Selected Validation Data



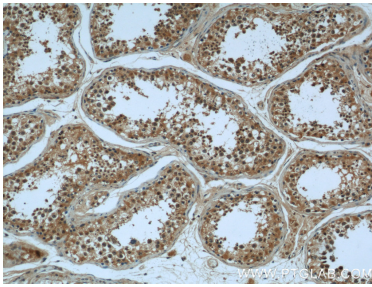
WB result of KIF15 antibody (55407-1-AP; 1:3000; incubated at room temperature for 1.5 hours) with sh-Control and sh-KIF15 transfected HEK-293 cells.



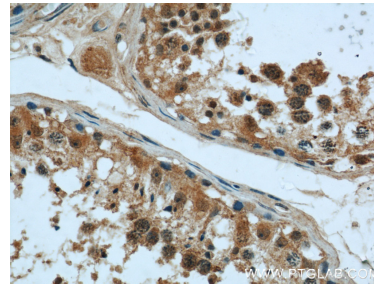
WB result of KIF15 antibody (55407-1-AP; 1:3000; incubated at room temperature for 1.5 hours) with sh-Control and sh-KIF15 transfected Jurkat cells.



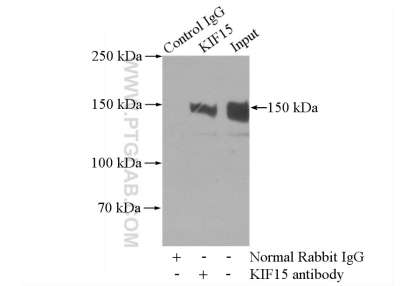
Jurkat cells were subjected to SDS PAGE followed by western blot with 55407-1-AP (KIF15 antibody) at dilution of 1:5000 incubated at room temperature for 1.5 hours.



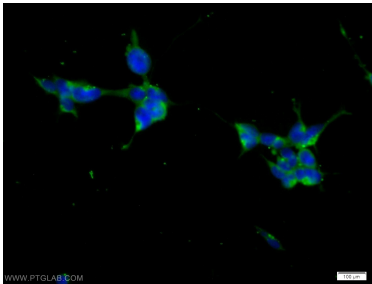
Immunohistochemical analysis of paraffin-embedded human testis using 55407-1-AP (KIF15 antibody) at dilution of 1:50 (under 10x lens).



Immunohistochemical analysis of paraffin-embedded human testis using 55407-1-AP (KIF15 antibody) at dilution of 1:50 (under 40x lens).



IP result of anti-KIF15 (IP:55407-1-AP, 4ug; Detection:55407-1-AP 1:500) with mouse thymus tissue lysate 2800ug.



Immunofluorescent analysis of HEK-293 cells using 55407-1-AP (KIF15 antibody) at dilution of 1:50 and Alexa Fluor 488-conjugated AffiniPure Goat Anti-Rabbit IgG(H+L).