

For Research Use Only

MME,CD10 Monoclonal antibody

Catalog Number: 60034-3-Ig **Featured Product**



Basic Information

Catalog Number: 60034-3-Ig	GenBank Accession Number: BC101658	Purification Method: Protein A purification
Size: 2400 µg/ml	GeneID (NCBI): 4311	CloneNo.: 4B9D9
Source: Mouse	UNIPROT ID: P08473	Recommended Dilutions: WB 1:500-1:2000 IHC 1:100-1:400
Isotype: IgG1	Full Name: membrane metallo-endoropeptidase	
Immunogen Catalog Number: AG0427	Calculated MW: 750 aa, 86 kDa	
	Observed MW: 100 kDa	

Applications

Tested Applications:

FC, IHC, WB, ELISA

Species Specificity:

human, pig, mouse

Note-IHC: suggested antigen retrieval with TE buffer pH 9.0; (*) Alternatively, antigen retrieval may be performed with citrate buffer pH 6.0

Positive Controls:

WB : pig kidney tissue, mouse kidney tissue, HEK-293 cells

IHC : human renal cell carcinoma tissue, human kidney tissue, human tonsil tissue, mouse kidney tissue, mouse liver tissue

Background Information

MME is also names as neprilysin, CALLA, NEP, SFE, CD10 and belongs to the peptidase M13 family. It is a glycoprotein that is particularly abundant in kidney, where it is present on the brush border of proximal tubules and on glomerular epithelium. CD10 has been considered a useful marker in the diagnosis of renal carcinomas, because of its expression in clear cell and papillary renal cell carcinomas and its absence in chromophobe renal cell carcinomas (PMID:15286660).

Storage

Storage:

Store at -20°C. Stable for one year after shipment.

Storage Buffer:

PBS with 0.02% sodium azide and 50% glycerol pH 7.3.

Aliquoting is unnecessary for -20°C storage

For technical support and original validation data for this product please contact:

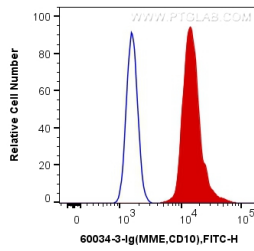
T: 4006900926

E: Proteintech-CN@ptglab.com

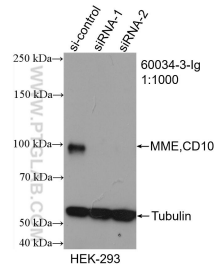
W: ptgcn.com

This product is exclusively available under Proteintech Group brand and is not available to purchase from any other manufacturer.

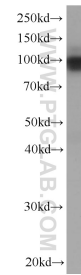
Selected Validation Data



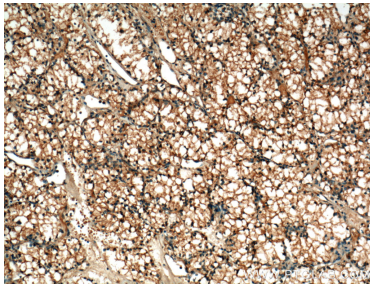
1X10⁶ Ramos cells were intracellularly stained with 0.2 ug Anti-Human MME,CD10 (60034-3-Ig, Clone:4B9D9) and CoraLite®488-Conjugated AffiniPure Goat Anti-Mouse IgG(H+L) at dilution 1:1000 (red), or 0.2 ug Control Antibody. Cells were fixed with 4% PFA and permeabilized with Flow Cytometry Perm Buffer (PF00011-C).



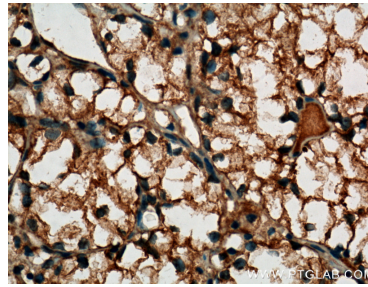
WB result of MME,CD10 antibody (60034-3-Ig; 1:1000; incubated at room temperature for 1.5 hours) with sh-Control and sh-MME,CD10 transfected HEK-293 cells.



pig kidney tissue were subjected to SDS PAGE followed by western blot with 60034-3-Ig (MME,CD10 Antibody) at dilution of 1:1000 incubated at room temperature for 1.5 hours.



Immunohistochemical analysis of paraffin-embedded human renal cell carcinoma tissue slide using 60034-3-Ig (MME,CD10 Antibody) at dilution of 1:400 (under 10x lens). Heat mediated antigen retrieval with Tris-EDTA buffer (pH 9.0).



Immunohistochemical analysis of paraffin-embedded human renal cell carcinoma tissue slide using 60034-3-Ig (MME,CD10 Antibody) at dilution of 1:400 (under 40x lens). Heat mediated antigen retrieval with Tris-EDTA buffer (pH 9.0).