

IL-1 Beta Monoclonal antibody

Catalog Number: 60136-1-Ig 13 Publications

Basic Information

Catalog Number:

60136-1-Ig

Size:

500 µg/ml

Source:

Mouse

Isotype:

IgG1

Immunogen Catalog Number:

AG10295

GenBank Accession Number:

BC008678

GeneID (NCBI):

3553

ENSEMBL Gene ID:

ENSG00000125538

UNIPROT ID:

P01584

Full Name:

interleukin 1, beta

Calculated MW:

269 aa, 31 kDa

Purification Method:

Protein G purification

CloneNo.:

1C6F12

Recommended Dilutions:

WB 1:500-1:1000

IP 0.5-4.0 µg for 1.0-3.0 mg of total protein lysate

IHC 1:50-1:500

Applications

Tested Applications:

IHC, IP, WB, ELISA

Cited Applications:

ELISA, WB

Species Specificity:

human

Cited Species:

human, rat, mouse

Note-IHC: suggested antigen retrieval with TE buffer pH 9.0; (*) Alternatively, antigen retrieval may be performed with citrate buffer pH 6.0

Positive Controls:

WB : Recombinant protein,

IP : RAW 264.7 cells,

IHC : human skin cancer tissue,

Background Information

Interleukin-1, produced mainly by blood monocytes, mediates the panoply of host reactions collectively known as acute phase response. It is identical to endogenous pyrogen. The multiple biologic activities that define IL1 are properties of a 15 to 18 kDa protein that is derived from a 30- to 35-kD precursor. Interleukin 1β (IL-1B) is a member of the interleukin 1 cytokine family. It is a pro-inflammatory cytokine against infection, playing an important role in the pathogenesis of cancers. It signals through various adaptor proteins and kinases that lead to activation of numerous downstream targets. The expression level of IL-1B is very low.

Notable Publications

| Author | Pubmed ID | Journal | Application |
|---------------|-----------|--------------------|-------------|
| Xiaqiong Wang | 25326752 | Nat Immunol | WB |
| Yue Pang | 29037260 | Cell Commun Signal | WB |
| Yi Huang | 32367047 | Nat Cell Biol | WB |

Storage

Storage:

Store at -20°C. Stable for one year after shipment.

Storage Buffer:

PBS with 0.02% sodium azide and 50% glycerol pH 7.3.

Aliquoting is unnecessary for -20°C storage

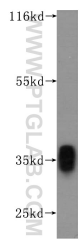
For technical support and original validation data for this product please contact:

T: 4006900926

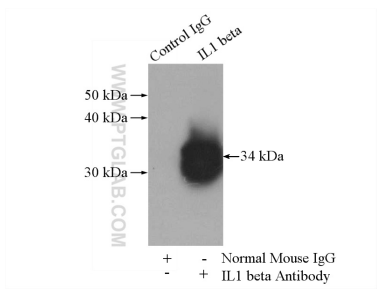
E: Proteintech-CN@ptglab.comW: ptgcn.com

This product is exclusively available under Proteintech Group brand and is not available to purchase from any other manufacturer.

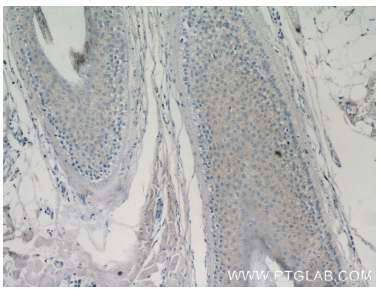
Selected Validation Data



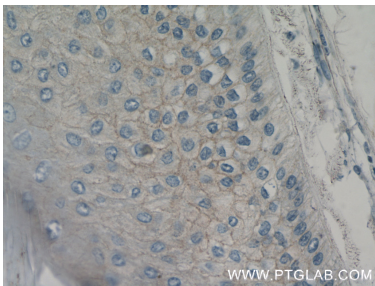
Recombinant protein were subjected to SDS PAGE followed by western blot with 60136-1-Ig (IL1 beta antibody) at dilution of 1:500 incubated at room temperature for 1.5 hours.



IP result of anti-IL-1 Beta (IP:60136-1-Ig, 5ug; Detection:60136-1-Ig 1:600) with RAW 264.7 cells lysate 4000ug.



Immunohistochemical analysis of paraffin-embedded human skin cancer tissue slide using 60136-1-Ig (IL1 beta antibody at dilution of 1:50 (under 10x lens).



Immunohistochemical analysis of paraffin-embedded human skin cancer tissue slide using 60136-1-Ig (IL1 beta antibody at dilution of 1:50 (under 40x lens).