

# CUL4B Monoclonal antibody

Catalog Number: 60151-1-Ig

Featured Product

5 Publications

## Basic Information

## Catalog Number:

60151-1-Ig

## Size:

2100 µg/ml

## Source:

Mouse

## Isotype:

IgG1

## Immunogen Catalog Number:

AG3563

## GenBank Accession Number:

BC036216

## GeneID (NCBI):

8450

## UNIPROT ID:

Q13620

## Full Name:

cullin 4B

## Calculated MW:

913 aa, 104 kDa

## Observed MW:

102 kDa

## Purification Method:

Caprylic acid/ammonium sulfate precipitation

## CloneNo.:

4E10B10

## Recommended Dilutions:

WB 1:1000-1:4000

IHC 1:50-1:500

## Applications

## Tested Applications:

IHC, WB, ELISA

## Cited Applications:

WB, IHC

## Species Specificity:

human, rat

## Cited Species:

human, mouse

**Note-IHC: suggested antigen retrieval with TE buffer pH 9.0; (\*) Alternatively, antigen retrieval may be performed with citrate buffer pH 6.0**

## Positive Controls:

WB: HeLa cells, HEK-293 cells, ROS1728 cells

IHC: human gliomas tissue,

## Background Information

Cullin-RING ligases (CRLs) complexes participate in the regulation of diverse cellular processes, including cell cycle progression, transcription, signal transduction and development (PMID: 21816341)(PMID: 21554755). Serving as the scaffold protein, cullins are crucial for the assembly of ligase complexes, which recognize and target various substrates for proteasomal degradation. Two cullin 4 (CUL4) proteins, CUL4A (87 kDa) and CUL4B (104 kDa), are two members in cullin family with 83% of identity. Mutations in human CUL4B are one of the major causes of X-linked mental retardation. Cul4b knockout mice demonstrated that CUL4B is indispensable for embryonic development in the mouse (PMID: 22606329).

## Notable Publications

Author	Pubmed ID	Journal	Application
Ziling Fang	30483755	Int J Oncol	
Min Zhong	34153655	Pathol Res Pract	IHC, WB
Alice Meroni	36490343	Sci Adv	WB

## Storage

## Storage:

Store at -20°C. Stable for one year after shipment.

## Storage Buffer:

PBS with 0.02% sodium azide and 50% glycerol pH 7.3.

Aliquoting is unnecessary for -20°C storage

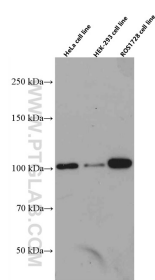
For technical support and original validation data for this product please contact:

T: 4006900926

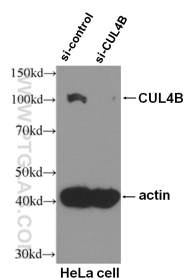
E: [Proteintech-CN@ptglab.com](mailto:Proteintech-CN@ptglab.com)W: [ptgcn.com](http://ptgcn.com)

**This product is exclusively available under Proteintech Group brand and is not available to purchase from any other manufacturer.**

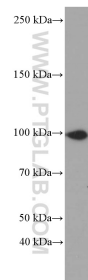
Selected Validation Data



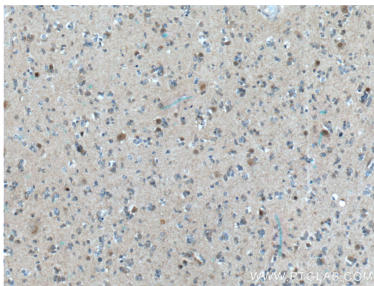
various lysates were subjected to SDS PAGE followed by western blot with 60151-1-Ig (CUL4B antibody) at dilution of 1:3000 incubated at room temperature for 1.5 hours.



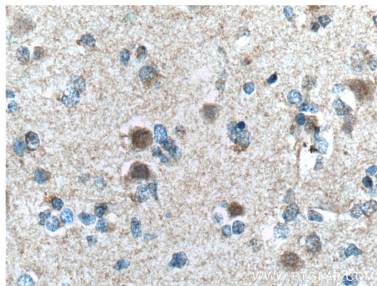
WB result of CUL4B antibody (60151-1-Ig, 1:500) with si-Control and si-CUL4B transfected HeLa cells.



HeLa cells were subjected to SDS PAGE followed by western blot with 60151-1-Ig (CUL4B Antibody) at dilution of 1:2000 incubated at room temperature for 1.5 hours.



Immunohistochemical analysis of paraffin-embedded human gliomas tissue slide using 60151-1-Ig (CUL4B Antibody) at dilution of 1:100 (under 10x lens). Heat mediated antigen retrieval with Tris-EDTA buffer (pH 9.0).



Immunohistochemical analysis of paraffin-embedded human gliomas tissue slide using 60151-1-Ig (CUL4B Antibody) at dilution of 1:100 (under 40x lens). Heat mediated antigen retrieval with Tris-EDTA buffer (pH 9.0).