

Cytokeratin 20 Monoclonal antibody

Catalog Number: 60183-1-Ig

3 Publications

Basic Information

Catalog Number:

60183-1-Ig

Size:

1200 µg/ml

Source:

Mouse

Isotype:

IgG2b

Immunogen Catalog Number:

AG11336

GenBank Accession Number:

BC031559

GeneID (NCBI):

54474

UNIPROT ID:

P35900

Full Name:

keratin 20

Calculated MW:

424 aa, 48 kDa

Observed MW:

46 kDa

Purification Method:

Protein A purification

CloneNo.:

4D10A4

Recommended Dilutions:

WB 1:500-1:2000

IHC 1:1000-1:51200

IF 1:400-1:1600

Applications

Tested Applications:

IF/ICC, IF-P, IHC, WB, ELISA

Cited Applications:

IF

Species Specificity:

human

Cited Species:

human

Note-IHC: suggested antigen retrieval with TE buffer pH 9.0; (*) Alternatively, antigen retrieval may be performed with citrate buffer pH 6.0

Positive Controls:

WB : Colo320 cells, COLO 320 cells

IHC : human colon tissue, human appendicitis tissue, human urothelial carcinoma tissue, human stomach tissue

IF : HT-29 cells, human colon tissue

Background Information

Keratins are a large family of proteins that form the intermediate filament cytoskeleton of epithelial cells. Keratin expression is highly regulated, tissue specific, and varies according to cell-state. Type I keratins consist of acidic, low molecular weight proteins with MW ranging from 40 kDa (KRT19) to 64 kDa (KRT9). Type 2 keratins consist of basic or neutral, high molecular weight proteins with MW from 52 kDa (KRT8) to 67 kDa (KRT18). Keratin 20 is a type I cytokeratin. It is a major cellular protein of mature enterocytes and goblet cells and is specifically found in the gastric and intestinal mucosa.

Notable Publications

Author	Pubmed ID	Journal	Application
Yoshiya Asano	29032203	Biochem Biophys Res Commun	IF
Yuli Wang	29693040	Cell Mol Gastroenterol Hepatol	IF
Lijun Hu	34093546	Front Immunol	IF

Storage

Storage:

Store at -20°C. Stable for one year after shipment.

Storage Buffer:

PBS with 0.02% sodium azide and 50% glycerol pH 7.3.

Aliquoting is unnecessary for -20°C storage

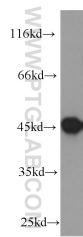
For technical support and original validation data for this product please contact:

T: 4006900926

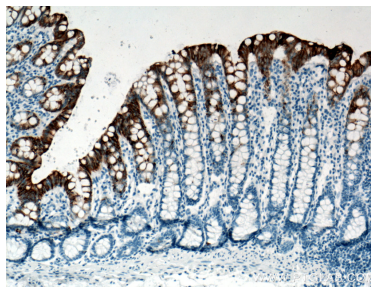
E: Proteintech-CN@ptglab.comW: ptgcn.com

This product is exclusively available under Proteintech Group brand and is not available to purchase from any other manufacturer.

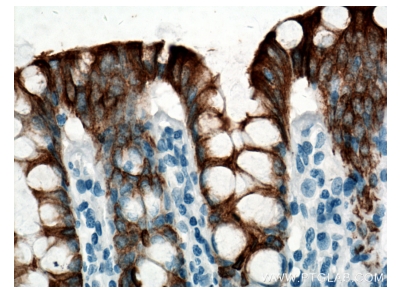
Selected Validation Data



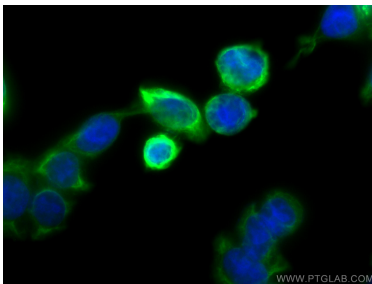
COLO 320 cells were subjected to SDS PAGE followed by western blot with 60183-1-Ig (Cytokeratin 20 antibody) at dilution of 1:1000 incubated at room temperature for 1.5 hours.



Immunohistochemical analysis of paraffin-embedded human colon tissue slide using 60183-1-Ig (Cytokeratin 20 antibody) at dilution of 1:51200 (under 10x lens. Heat mediated antigen retrieval with Tris-EDTA buffer (pH 9.0).



Immunohistochemical analysis of paraffin-embedded human colon tissue slide using 60183-1-Ig (Cytokeratin 20 antibody) at dilution of 1:51200 (under 40x lens. Heat mediated antigen retrieval with Tris-EDTA buffer (pH 9.0).



Immunofluorescent analysis of (-20°C Ethanol) fixed HT-29 cells using Cytokeratin 20 antibody (60183-1-Ig, Clone: 4D10A4) at dilution of 1:800 and CoraLite®488-Conjugated AffiniPure Goat Anti-Mouse IgG(H+L).