

For Research Use Only

Myosin Light Chain 2/MLC-2V Monoclonal antibody

Catalog Number: 60229-1-Ig **3 Publications**



Basic Information

Catalog Number: 60229-1-Ig	GenBank Accession Number: BC015821	Purification Method: Protein A purification
Size: 1500 ug/ml	GeneID (NCBI): 4633	CloneNo.: 5A1F1
Source: Mouse	UNIPROT ID: P10916	Recommended Dilutions: WB 1:5000-1:50000 IHC 1:500-1:2000 IF/ICC 1:400-1:1600
Isotype: IgG1	Full Name: myosin, light chain 2, regulatory, cardiac, slow	
Immunogen Catalog Number: AG1356	Calculated MW: 19 kDa	
	Observed MW: 18 kDa	

Applications

Tested Applications: WB, IHC, IF/ICC, ELISA	Positive Controls: WB : human heart tissue, pig heart tissue, rat heart tissue, rabbit heart tissue IHC : mouse heart tissue, human heart tissue, mouse skeletal muscle tissue IF/ICC : C2C12 cells,
Cited Applications: WB, IF	
Species Specificity: human, mouse, rat, pig, rabbit	
Cited Species: human, rat	
Note-IHC: suggested antigen retrieval with TE buffer pH 9.0; (*) Alternatively, antigen retrieval may be performed with citrate buffer pH 6.0	

Background Information

MYL2, also named as MLC-2v and MLC-2, is ventricular/cardiac muscle isoform. Defects in MYL2 are the cause of cardiomyopathy familial hypertrophic type 10 (CMH10). Defects in MYL2 are the cause of cardiomyopathy familial hypertrophic with mid-left ventricular chamber type 2 (MVC2). MYL2 has been widely used as a marker of mature ventricular cardiomyocytes.

Notable Publications

Author	Pubmed ID	Journal	Application
Xiangyu Zhang	35246800	Stem Cell Rev Rep	IF
Jingcheng Wang	36042011	Int J Stem Cells	WB
Y Wang	26269433	Stem Cells	IF

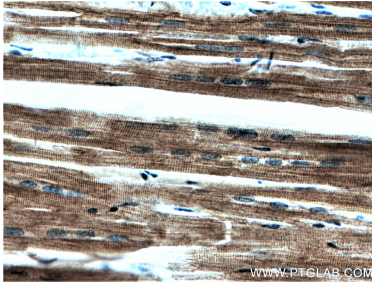
Storage

Storage:
Store at -20°C. Stable for one year after shipment.
Storage Buffer:
PBS with 0.02% sodium azide and 50% glycerol pH 7.3.
Aliquoting is unnecessary for -20°C storage

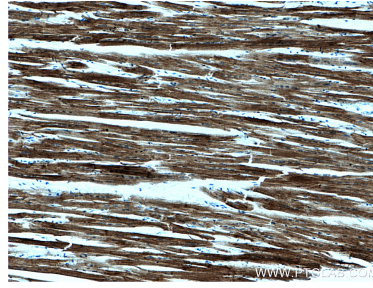
For technical support and original validation data for this product please contact:
T: 4006900926 E: Proteintech-CN@ptglab.com W: ptgcn.com

This product is exclusively available under Proteintech Group brand and is not available to purchase from any other manufacturer.

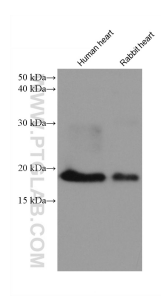
Selected Validation Data



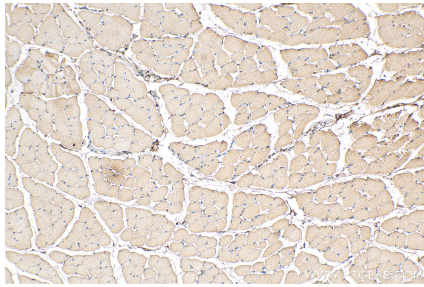
Immunohistochemical analysis of paraffin-embedded human heart tissue slide using 60229-1-Ig (Myosin Light Chain 2 antibody) at dilution of 1:500 (under 0x lens).



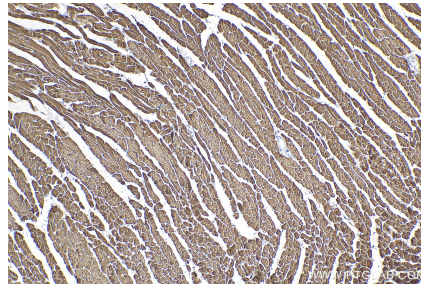
Immunohistochemical analysis of paraffin-embedded human heart tissue slide using 60229-1-Ig (Myosin Light Chain 2 antibody) at dilution of 1:500 (under 10x lens).



Various lysates were subjected to SDS PAGE followed by western blot with 60229-1-Ig (Myosin Light Chain 2/MLC-2V antibody) at dilution of 1:10000 incubated at room temperature for 1.5 hours.

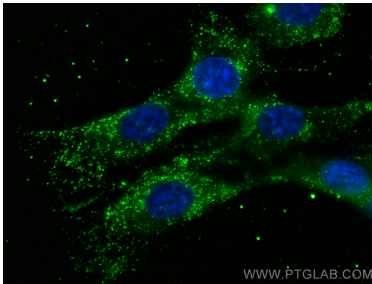


Immunohistochemical analysis of paraffin-embedded mouse skeletal muscle tissue slide using 60229-1-Ig (Myosin Light Chain 2/MLC-2V antibody) at dilution of 1:1000 (under 10x lens). Heat mediated antigen retrieval with Tris-EDTA buffer (pH 9.0).



Immunohistochemical analysis of paraffin-embedded mouse heart tissue slide using 60229-1-Ig (Myosin Light Chain 2/MLC-2V antibody) at dilution of 1:1000 (under 10x lens). Heat mediated antigen retrieval with Tris-EDTA buffer (pH 9.0).

Immunohistochemical analysis of paraffin-embedded human heart tissue slide using 60229-1-Ig (Myosin Light Chain 2 antibody) at dilution of 1:500 (under 10x lens).



Immunofluorescent analysis of (-20°C Methanol) fixed C2C12 cells using Myosin Light Chain 2/MLC-2V antibody (60229-1-Ig, Clone: 5A1F1) at dilution of 1:800 and CoraLite®488-Conjugated AffiniPure Goat Anti-Mouse IgG(H+L).