

# CD20 Monoclonal antibody

Catalog Number: 60271-1-Ig 21 Publications

## Basic Information

### Catalog Number:

60271-1-Ig

### Size:

1000 µg/ml

### Source:

Mouse

### Isotype:

IgG2b

### Immunogen Catalog Number:

AG17309

### GenBank Accession Number:

BC002807

### GeneID (NCBI):

931

### UNIPROT ID:

P11836

### Full Name:

membrane-spanning 4-domains, subfamily A, member 1

### Calculated MW:

297 aa, 33 kDa

### Observed MW:

35 kDa

### Purification Method:

Protein A purification

### CloneNo.:

4A7G3

### Recommended Dilutions:

WB 1:5000-1:50000

IHC 1:1000-1:15000

IF 1:200-1:800

## Applications

### Tested Applications:

FC, IF/ICC, IF-P, IHC, WB, ELISA

### Cited Applications:

IF, IHC

### Species Specificity:

human

### Cited Species:

human

**Note-IHC: suggested antigen retrieval with TE buffer pH 9.0; (\*) Alternatively, antigen retrieval may be performed with citrate buffer pH 6.0**

### Positive Controls:

WB : Raji cells, Daudi cells, Ramos cells

IHC : human tonsillitis tissue, human appendicitis tissue

IF : human tonsillitis tissue, Raji cells

## Background Information

CD20 is a 33-37 kDa transmembrane phosphoprotein. CD20 is a B-lymphocyte surface molecule that is widely expressed during B-cell ontogeny, from early pre-B-cell developmental stages until final differentiation into plasma cells. CD20 functions as calcium-permeable cation channel. It is involved in the regulation of B-cell activation and proliferation. CD20 serves as a useful target for antibody-mediated therapeutic depletion of B-cells.

## Notable Publications

Author	Pubmed ID	Journal	Application
Ye Nie	36190431	FASEB J	IHC
Wenxing Yue	30911896	Virol Sin	IF
Zhixiu Xia	34127021	World J Surg Oncol	IHC

## Storage

### Storage:

Store at -20°C. Stable for one year after shipment.

### Storage Buffer:

PBS with 0.02% sodium azide and 50% glycerol pH 7.3.

Aliquoting is unnecessary for -20°C storage

For technical support and original validation data for this product please contact:

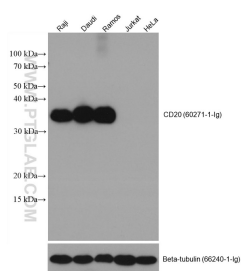
T: 4006900926

E: [Proteintech-CN@ptglab.com](mailto:Proteintech-CN@ptglab.com)

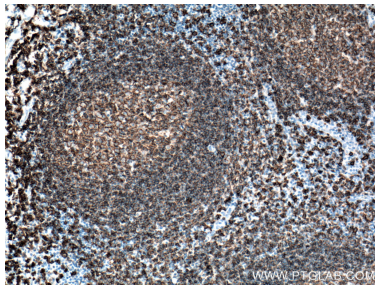
W: [ptgcn.com](http://ptgcn.com)

**This product is exclusively available under Proteintech Group brand and is not available to purchase from any other manufacturer.**

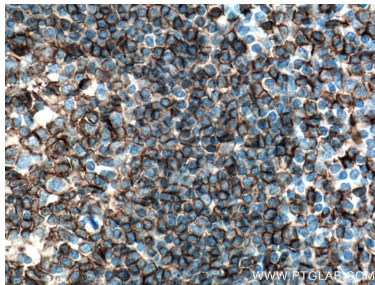
Selected Validation Data



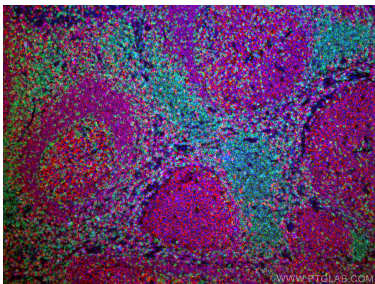
Raji cells (CD20+), Daudi cells (CD20+), Ramos cells (CD20+), Jurkat cells (CD20-), and HeLa cells (CD20-) were subjected to SDS PAGE followed by western blot with 60271-1-Ig (CD20 antibody) at dilution of 1:20000 incubated at room temperature for 1.5 hours.



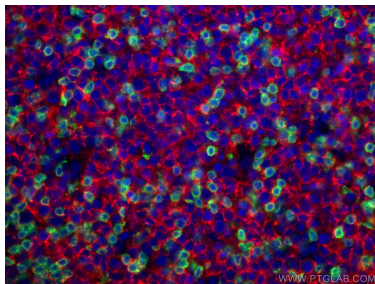
Immunohistochemical analysis of paraffin-embedded human tonsillitis tissue slide using 60271-1-Ig (CD20 antibody) at dilution of 1:12800 (under 10x lens. Heat mediated antigen retrieval with Tris-EDTA buffer (pH 9.0).



Immunohistochemical analysis of paraffin-embedded human tonsillitis tissue slide using 60271-1-Ig (CD20 antibody) at dilution of 1:12800 (under 40x lens. Heat mediated antigen retrieval with Tris-EDTA buffer (pH 9.0).



Immunofluorescent analysis of (4% PFA) fixed human tonsillitis tissue using CD20 antibody (60271-1-Ig, Clone: 4A7G3 ) at dilution of 1:400 and CoraLite®594-Conjugated AffiniPure Goat Anti-Mouse IgG(H+L), CD3 antibody (17617-1-AP, green).



Immunofluorescent analysis of (4% PFA) fixed human tonsillitis tissue using CD20 antibody (60271-1-Ig, Clone: 4A7G3 ) at dilution of 1:400 and CoraLite®594-Conjugated AffiniPure Goat Anti-Mouse IgG(H+L), CD3 antibody (17617-1-AP, green).



1X10<sup>6</sup> Daudi cells were intracellularly stained with 0.4 ug Anti-Human CD20 (60271-1-Ig, Clone:4A7G3) and CoraLite®488-Conjugated AffiniPure Goat Anti-Mouse IgG(H+L) at dilution 1:1000 (red), or 0.4 ug Mouse IgG2b Isotype Control (MPC-11) (65128-1-Ig, Clone: MPC-11) (blue). Cells were fixed with 4% PFA and permeabilized with Flow Cytometry Perm Buffer (PF00011-C).