

OPTN Monoclonal antibody

Catalog Number: 60293-1-Ig

Featured Product

2 Publications

Basic Information

| | | |
|--|--|---|
| Catalog Number: 60293-1-Ig | GenBank Accession Number: BC013876 | Purification Method: Protein A purification |
| Size: 2000 µg/ml | GeneID (NCBI): 10133 | CloneNo.: 6C1H4 |
| Source: Mouse | UNIPROT ID: Q96CV9 | Recommended Dilutions: WB 1:500-1:2000 IHC 1:50-1:500 IF 1:50-1:500 |
| Isotype: IgG1 | Full Name: optineurin | |
| Immunogen Catalog Number: AG1272 | Calculated MW: 66 kDa | |
| | Observed MW: 70-74 kDa | |

Applications

Tested Applications:
IF/ICC, IHC, WB, ELISA

Cited Applications:
IF, WB

Species Specificity:
human

Cited Species:
human

Note-IHC: suggested antigen retrieval with TE buffer pH 9.0; (*) Alternatively, antigen retrieval may be performed with citrate buffer pH 6.0

Positive Controls:

WB : human heart tissue,

IHC : human pancreas cancer tissue, human brain tissue

IF : HepG2 cells,

Background Information

OPTN, also named as FIP2, GLC1E, HIP7, HYPL and NRP, plays a neuroprotective role in the eye and optic nerve. It is probably part of the TNF- α signaling pathway that can shift the equilibrium toward induction of cell death. OPTN may act by regulating membrane trafficking and cellular morphogenesis via a complex that contains Rab8 and huntingtin (HD). OPTN may constitute a cellular target for adenovirus E3 14.7, an inhibitor of TNF- α functions, thereby affecting cell death. Defects in OPTN are the cause of primary open angle glaucoma type 1E (GLC1E). Defects in OPTN are a cause of susceptibility to normal pressure glaucoma (NPG). OPTN mutated in adult-onset primary open angle glaucoma. It supports the protective role of OPTN in the trabecular meshwork.

Notable Publications

| Author | Pubmed ID | Journal | Application |
|-----------|-----------|-----------|-------------|
| Deguan Lv | 35659339 | Dev Cell | WB,IF |
| Qian Xue | 36622894 | Autophagy | WB |

Storage

Storage:

Store at -20°C. Stable for one year after shipment.

Storage Buffer:

PBS with 0.02% sodium azide and 50% glycerol pH 7.3.

Aliquoting is unnecessary for -20°C storage

For technical support and original validation data for this product please contact:

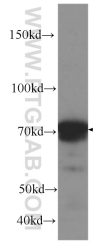
T: 4006900926

E: Proteintech-CN@ptglab.com

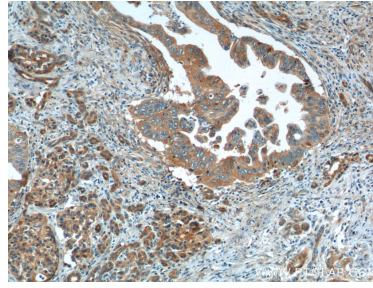
W: ptgcn.com

This product is exclusively available under Proteintech Group brand and is not available to purchase from any other manufacturer.

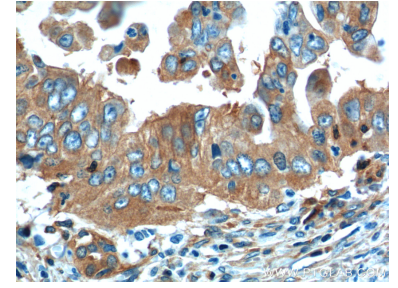
Selected Validation Data



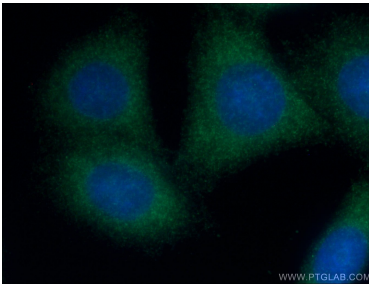
human heart tissue were subjected to SDS PAGE followed by western blot with 60293-1-Ig (OPTN Antibody) at dilution of 1:1000 incubated at room temperature for 1.5 hours.



Immunohistochemical analysis of paraffin-embedded human pancreas cancer tissue slide using 60293-1-Ig (OPTN Antibody) at dilution of 1:200 (under 10x lens).



Immunohistochemical analysis of paraffin-embedded human pancreas cancer tissue slide using 60293-1-Ig (OPTN Antibody) at dilution of 1:200 (under 40x lens).



Immunofluorescent analysis of (-20°C Ethanol) fixed HepG2 cells using 60293-1-Ig (OPTN antibody) at dilution of 1:100 and Alexa Fluor 488-conjugated AffiniPure Goat Anti-Mouse IgG(H+L).