

PLAP Monoclonal antibody

Catalog Number: 60294-1-Ig

Featured Product

2 Publications

Basic Information

Catalog Number:

60294-1-Ig

Size:

1000 µg/ml

Source:

Mouse

Isotype:

IgG1

Immunogen Catalog Number:

AG13361

GenBank Accession Number:

BC009647

GeneID (NCBI):

250

UNIPROT ID:

P05187

Full Name:

alkaline phosphatase, placental
(Regan isozyme)

Calculated MW:

58 kDa

Observed MW:

66 kDa

Purification Method:

Protein G purification

CloneNo.:

2B7C9

Recommended Dilutions:

WB 1:5000-1:50000

IHC 1:20-1:200

Applications

Tested Applications:

FC, IHC, WB, ELISA

Cited Applications:

IF, WB

Species Specificity:

human

Cited Species:

rat

**Note-IHC: suggested antigen retrieval with
TE buffer pH 9.0; (*) Alternatively, antigen
retrieval may be performed with citrate
buffer pH 6.0**

Positive Controls:

WB : SCaBER cells, HepG2 cells, human placenta tissue,
HT-1376 cells

IHC : human placenta tissue,

Background Information

Placental alkaline phosphatase (PLAP) is a glycosyl phosphatidylinositol (GPI)-anchored sialoglycoprotein, which shows greater resistance to heat inactivation than other alkaline phosphatase. Presented at high levels in placental trophoblasts, PLAP is recognized as an important marker of differentiation in human malignancies.

Notable Publications

Author	Pubmed ID	Journal	Application
Xin Zhao	33205619	J Cell Mol Med	IF
Situo Wang	36896013	Front Bioeng Biotechnol	WB

Storage

Storage:

Store at -20°C. Stable for one year after shipment.

Storage Buffer:

PBS with 0.02% sodium azide and 50% glycerol pH 7.3.

Aliquoting is unnecessary for -20°C storage

For technical support and original validation data for this product please contact:

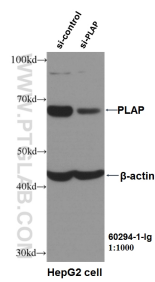
T: 4006900926

E: Proteintech-CN@ptglab.com

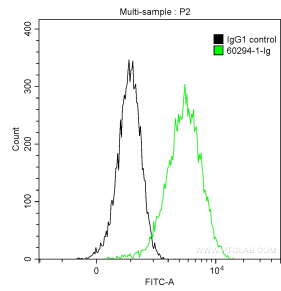
W: ptgcn.com

This product is exclusively available under Proteintech Group brand and is not available to purchase from any other manufacturer.

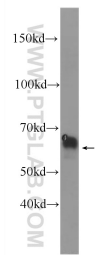
Selected Validation Data



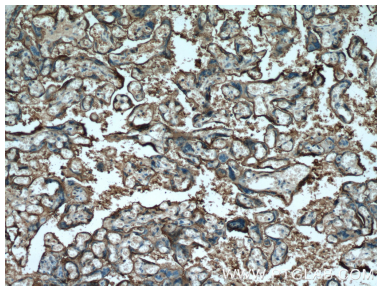
WB result of PLAP antibody (60294-1-Ig, 1:1000) with si-control and si-PLAP transfected HepG2 cells.



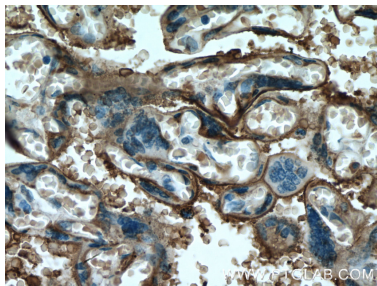
1X10⁶ HepG2 cells were intracellularly stained with 0.2 ug Anti-Human PLAP (60294-1-Ig, Clone:2B7C9) and CoraLite®488-Conjugated AffiniPure Goat Anti-Mouse IgG(H+L) at dilution 1:1000 (green), and 0.2 ug Mouse IgG1 Isotype Control (66360-1-Ig, Clone: T1F8D3F10) (black). Cells were fixed with 4% PFA and permeabilized with 0.1% TritonX-100.



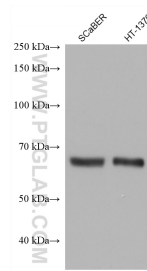
HepG2 cells were subjected to SDS PAGE followed by western blot with 60294-1-Ig (PLAP antibody at dilution of 1:1000 incubated at room temperature for 1.5 hours.



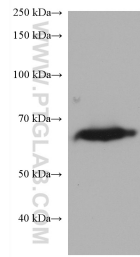
Immunohistochemical analysis of paraffin-embedded human placenta tissue slide using 60294-1-Ig (PLAP antibody at dilution of 1:100 (under 10x lens).



Immunohistochemical analysis of paraffin-embedded human placenta tissue slide using 60294-1-Ig (PLAP antibody at dilution of 1:100 (under 40x lens).



Various lysates were subjected to SDS PAGE followed by western blot with 60294-1-Ig (PLAP antibody) at dilution of 1:10000 incubated at room temperature for 1.5 hours.



human placenta tissue were subjected to SDS PAGE followed by western blot with 60294-1-Ig (PLAP antibody) at dilution of 1:10000 incubated at room temperature for 1.5 hours.