

For Research Use Only

CDK2 Monoclonal antibody

Catalog Number: 60312-1-Ig **23 Publications**



Basic Information

Catalog Number: 60312-1-Ig	GenBank Accession Number: BC003065	Purification Method: Caprylic acid/ammonium sulfate precipitation
Concentration: 1000 ug/ml	GeneID (NCBI): 1017	CloneNo.: 4E2E10
Source: Mouse	UNIPROT ID: P24941	Recommended Dilutions: WB: 1:500-1:2000 IHC: 1:20-1:200 IF/ICC: 1:400-1:1600 FC (Intra): 0.25 ug per 10 ⁶ cells in a 100 µl suspension
Isotype: IgM	Full Name: cyclin-dependent kinase 2	
Immunogen Catalog Number: AG21310	Calculated MW: 33 kDa	
	Observed MW: 30 kDa	

Applications

Tested Applications: WB, IHC, IF/ICC, FC (Intra), ELISA	Positive Controls: WB : K-562 cells, IHC : human lymphoma tissue, human cervical cancer tissue IF/ICC : HeLa cells, FC (Intra) : HepG2 cells,
Cited Applications: WB, IHC	
Species Specificity: human	
Cited Species: human, mouse, bovine	
Note-IHC: suggested antigen retrieval with TE buffer pH 9.0; (*) Alternatively, antigen retrieval may be performed with citrate buffer pH 6.0	

Background Information

CDK2(Cyclin-dependent kinase 2) is also named as CDKN2 and belongs to the protein kinase superfamily,CMGC Ser/Thr protein kinase family, CDC2/CDKX subfamily.It is involved in the control of the cell cycle; essential for meiosis, but dispensable for mitosis.It has 2 isoforms produced by alternative splicing.

Notable Publications

Author	Pubmed ID	Journal	Application
Jingwen Tan	36208777	Chem Biol Interact	WB
Chenxiang Qi	34650666	Oxid Med Cell Longev	WB
Mengqi Cui	34602553	Biol Pharm Bull	WB

Storage

Storage:
Store at -20°C. Stable for one year after shipment.
Storage Buffer:
PBS with 0.02% sodium azide and 50% glycerol, pH7.3
Aliquoting is unnecessary for -20°C storage

For technical support and original validation data for this product please contact:

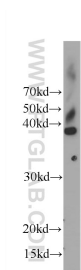
T: 4006900926

E: Proteintech-CN@ptglab.com

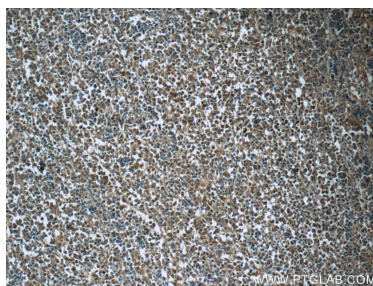
W: ptgcn.com

This product is exclusively available under Proteintech Group brand and is not available to purchase from any other manufacturer.

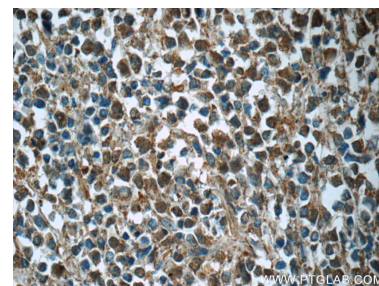
Selected Validation Data



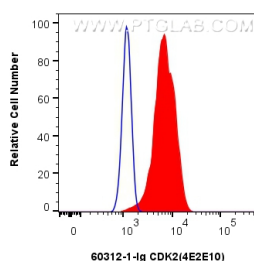
K-562 cells were subjected to SDS PAGE followed by western blot with 60312-1-Ig (CDK2 Antibody) at dilution of 1:1000 incubated at room temperature for 1.5 hours.



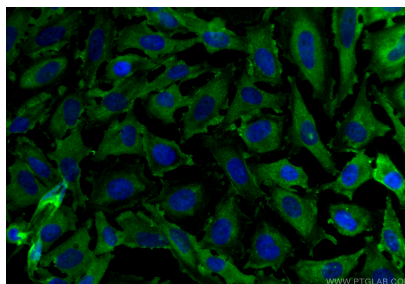
Immunohistochemical analysis of paraffin-embedded human lymphoma tissue slide using 60312-1-Ig (CDK2 Antibody) at dilution of 1:50 (under 10x lens).



Immunohistochemical analysis of paraffin-embedded human lymphoma tissue slide using 60312-1-Ig (CDK2 Antibody) at dilution of 1:50 (under 40x lens).



1×10^6 HepG2 cells were intracellularly stained with 0.25 μ g CDK2 Monoclonal antibody (60312-1-Ig, Clone:4E2E10) and CoraLite®488-Conjugated Goat Anti-Mouse IgG(H+L) (SA00013-1)(red), or 0.25 μ g Isotype Control (blue). Cells were fixed with 4% PFA and permeabilized with Flow Cytometry Perm Buffer (PF00011-C).



Immunofluorescent analysis of (4% PFA) fixed HeLa cells using CDK2 antibody (60312-1-Ig, Clone: 4E2E10) at dilution of 1:800 and CoraLite®488-Conjugated Goat Anti-Mouse IgG(H+L) (SA00013-1).