

For Research Use Only

CX3CL1 Monoclonal antibody

Catalog Number: 60339-1-Ig **1 Publications**



Basic Information

Catalog Number: 60339-1-Ig	GenBank Accession Number: BC001163	Purification Method: Protein G purification
Size: 4686 µg/ml	GeneID (NCBI): 6376	CloneNo.: 2F5D5
Source: Mouse	UNIPROT ID: P78423	Recommended Dilutions: WB 1:500-1:2000 IHC 1:50-1:500
Isotype: IgG1	Full Name: chemokine (C-X3-C motif) ligand 1	
Immunogen Catalog Number: AG0161	Calculated MW: 42 kDa	
	Observed MW: 90 kDa	

Applications

Tested Applications: FC, IHC, WB, ELISA	Positive Controls:
Cited Applications: IF	WB : PC-3 cells,
Species Specificity: human	IHC : human brain tissue, human small intestine tissue
Cited Species: human	

Note-IHC: suggested antigen retrieval with *TE buffer pH 9.0*; (*) Alternatively, antigen retrieval may be performed with *citrate buffer pH 6.0*

Background Information

Notable Publications

Author	Pubmed ID	Journal	Application
ChenYang Lu	37561593	JCI Insight	IF

Storage

Storage:
Store at -20°C. Stable for one year after shipment.
Storage Buffer:
PBS with 0.02% sodium azide and 50% glycerol pH 7.3.
Aliquoting is unnecessary for -20°C storage

For technical support and original validation data for this product please contact:

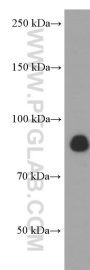
T: 4006900926

E: Proteintech-CN@ptglab.com

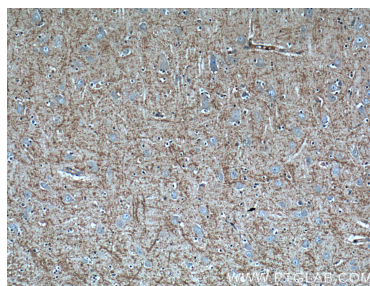
W: ptgcn.com

This product is exclusively available under Proteintech Group brand and is not available to purchase from any other manufacturer.

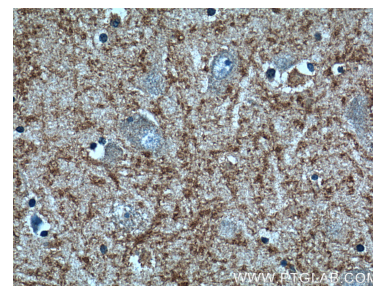
Selected Validation Data



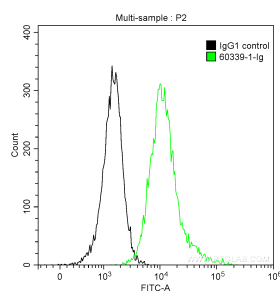
PC-3 cells were subjected to SDS PAGE followed by western blot with 60339-1-Ig (CX3CL1 antibody) at dilution of 1:1000 incubated at room temperature for 1.5 hours.



Immunohistochemical analysis of paraffin-embedded human brain tissue slide using 60339-1-Ig (CX3CL1 Antibody) at dilution of 1:200 (under 10x lens).



Immunohistochemical analysis of paraffin-embedded human brain tissue slide using 60339-1-Ig (CX3CL1 Antibody) at dilution of 1:200 (under 40x lens).



1X10⁶ PC-3 cells were stained with 0.2 ug Anti-Human CX3CL1 (60339-1-Ig, Clone: 2F5D5) and CoraLite®488-Conjugated AffiniPure Goat Anti-Mouse IgG(H+L) at dilution 1:1000 (green), or stained with 0.2 ug Mouse IgG1 Isotype Control and CoraLite®488-Conjugated AffiniPure Goat Anti-Mouse IgG(H+L) at dilution 1:1000 (black). Cells were fixed with 90% MeOH.