

TIM3 Monoclonal antibody

 Catalog Number: **60355-1-Ig** **18 Publications**

Basic Information

Catalog Number: 60355-1-Ig	GenBank Accession Number: BC020843	Purification Method: Protein A purification
Size: 1491 μ g/ml	GeneID (NCBI): 84868	CloneNo.: 4C4G3
Source: Mouse	UNIPROT ID: Q8TDQ0	Recommended Dilutions: WB 1:1000-1:10000
Isotype: IgG1	Full Name: hepatitis A virus cellular receptor 2	
Immunogen Catalog Number: AG16901	Calculated MW: 301 aa, 33 kDa	
	Observed MW: 33 kDa, 50-70 kDa	

Applications

Tested Applications: FC, WB, ELISA	Positive Controls:
Cited Applications: WB, FC	WB : Daudi cells, PC-3 cells, pig thymus tissue, ROS1728 cells, human heart tissue, RAW 264.7 cells, rat heart tissue
Species Specificity: human, pig, mouse, rat	
Cited Species: human, rat, mouse, pig	

Background Information

TIM3, also known as HAVCR2, is a member of the recently discovered T cell Ig and mucin domain-containing molecule superfamily. TIM3 is a negative regulatory molecule that is important for T cell tolerance and has a crucial role in autoimmunity and T cell exhaustion during chronic viral infection (PMID: 23180819). TIM3 is expressed by T-helper type 1 (Th1) cells, macrophage, monocyte, dendritic cells, CD8⁺ T cell and other lymphocyte subsets. Galectin-9 is a ligand for TIM3. TIM3-galectin-9 pathway negatively regulates T helper type 1 immunity (PMID: 16286920). TIM3 is a 280-aa membrane protein with a calculated molecular weight of 33 kDa, the higher molecular weights between 50 and 70 kDa detected by this monoclonal antibody probably represent glycosylated TIM3 (PMID: 20107545; 17069754; 11725301).

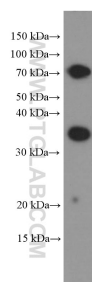
Notable Publications

Author	Pubmed ID	Journal	Application
Qing Guo	36325060	iScience	WB
Fan Wu	32418210	J Pathol	
Inés Ruedas-Torres	34046040	Front Immunol	

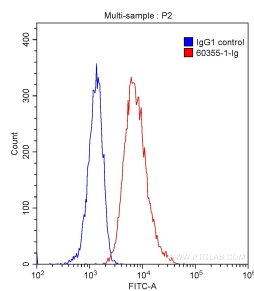
Storage

Storage:
Store at -20°C. Stable for one year after shipment.
Storage Buffer:
PBS with 0.02% sodium azide and 50% glycerol pH 7.3.
 Aliquoting is unnecessary for -20°C storage

Selected Validation Data



Daudi cells were subjected to SDS PAGE followed by western blot with 60355-1-Ig (TIM3 Antibody) at dilution of 1:2000 incubated at room temperature for 1.5 hours.



1X10⁶ Daudi cells were stained with 0.20 ug Anti-Human TIM3 (60355-1-Ig, Clone: 4C4G3) (red) or 0.20 ug isotype control antibody (blue) and CoraLite®488-Conjugated AffiniPure Goat Anti-Mouse IgG(H+L) with dilution 1:1000. Cells were fixed with 90% MeOH.