

For Research Use Only

Anti-Mouse CD31 (390)

Catalog Number: 65058-1-Ig **3 Publications**



Basic Information

Catalog Number: 65058-1-Ig	GenBank Accession Number: BC008519	Purification Method: Affinity purification
Size: 500ug, 0.5 mg/ml	GeneID (NCBI): 18613	CloneNo.: 390
Source: Rat	UNIPROT ID: Q08481	Recommended Dilutions: IF 1:50-1:500
Isotype: IgG2a, kappa	Full Name: platelet/endothelial cell adhesion molecule 1	

Applications

Tested Applications: FC, IF/ICC	Positive Controls: IF : bEnd.3 cells,
Cited Applications: IF	
Species Specificity: Mouse	
Cited Species: mouse	

Background Information

Platelet endothelial cell adhesion molecule-1 (PECAM-1, CD31) is a member of the immunoglobulin gene superfamily of cell adhesion molecules. CD31 is a transmembrane glycoprotein that is highly expressed on the surface of the endothelium, making up a large portion of its intracellular junctions. PECAM-1 is also present on the surface of hematopoietic cells and immune cells including platelets, monocytes, neutrophils, natural killer cells, megakaryocytes and some types of T-cell (PMID: 9011572). As well as its role in cell-cell adhesion, PECAM-1 functions as a signaling receptor, and is involved in important physiological events such as nitric oxide production, regulation of T-cell immunity and tolerance, leukocyte transendothelial migration and inflammation and angiogenesis (PMID: 21183735; 20978210; 17872453; 20634489).

Notable Publications

Author	Pubmed ID	Journal	Application
Xiaopeng Ai	35697191	J Ethnopharmacol	IF
Jianglong Kong	38150667	Adv Mater	IF
Rui Liang	37874152	mBio	IF

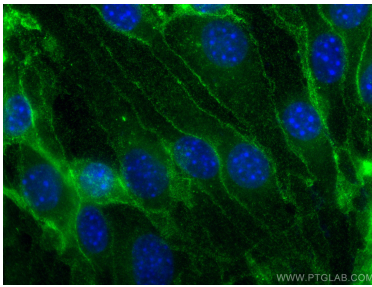
Storage

Storage:
Store at 2-8°C. Stable for one year after shipment.
Storage Buffer:
PBS with 0.09% sodium azide.

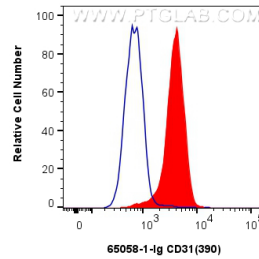
For technical support and original validation data for this product please contact:
T: 4006900926 E: Proteintech-CN@ptglab.com W: ptgcn.com

This product is exclusively available under Proteintech Group brand and is not available to purchase from any other manufacturer.

Selected Validation Data



Immunofluorescent analysis of (4% PFA) fixed bEnd.3 cells using CD31 antibody (65058-1-Ig, Clone: 390) at dilution of 1:100 and CoraLite®488-Conjugated AffiniPure Goat Anti-Rat IgG(H+L).



1×10^6 mouse splenocytes were surface stained with 0.5 μ g Anti-Mouse CD31 (65058-1-Ig, Clone: 390) and FITC anti-rat IgG2a Antibody at dilution 1:100 (red), or 0.5 μ g Rat IgG2a Isotype Control (2A3) (65209-1-Ig, Clone: 2A3) and FITC anti-rat IgG2a Antibody at dilution 1:100 (blue). Cells were not fixed.