

For Research Use Only

Anti-Human CDK1 (POH-1)

Catalog Number: 65182-1-Ig **1 Publications**



Basic Information

Catalog Number:

65182-1-Ig

Size:

100ug, 1 mg/ml

Source:

Mouse

Isotype:

IgG2a, kappa

GenBank Accession Number:

BC014563

GeneID (NCBI):

983

UNIPROT ID:

P06493

Full Name:

cell division cycle 2, G1 to S and G2 to M

Calculated MW:

25 kDa

Observed MW:

30-34 kDa

Purification Method:

Purified by protein-A affinity chromatography

CloneNo.:

POH-1

Recommended Dilutions:

WB 1:500-1:2000

Applications

Tested Applications:

FC (Intra), WB

Cited Applications:

WB

Species Specificity:

Human, Bovine

Cited Species:

human

Positive Controls:

WB : A431 cells, HEK-293 cells, HeLa cells, K-562 cells

Background Information

CDK1, also named as CDC2, belongs to the protein kinase superfamily, CMGC Ser/Thr protein kinase family and CDC2/CDKX subfamily. CDK1 plays a key role in the control of the eukaryotic cell cycle. It is required in higher cells for entry into S-phase and mitosis. CDK1 is a catalytic subunit of the highly conserved protein kinase complex known as M-phase promoting factor (MPF), which is essential for G1/S and G2/M phase transitions of eukaryotic cell cycle. It is a component of the kinase complex that phosphorylates the repetitive C-terminus of RNA polymerase II. Mitotic cyclins stably associate with CDK1 and function as regulatory subunits. CDK1 has 2 isoforms produced by alternative splicing with the molecular mass of 34 kDa and 27 kDa.

Notable Publications

Author	Pubmed ID	Journal	Application
Masato Yoshizawa	38151292	Cancer Genomics Proteomics	WB

Storage

Storage:

Store at 2-8°C. Stable for one year after shipment.

Storage Buffer:

PBS with 0.1% sodium azide.

For technical support and original validation data for this product please contact:

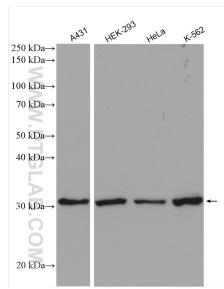
T: 4006900926

E: Proteintech-CN@ptglab.com

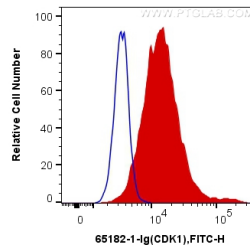
W: ptgcn.com

This product is exclusively available under Proteintech Group brand and is not available to purchase from any other manufacturer.

Selected Validation Data



Various lysates were subjected to SDS PAGE followed by western blot with 65182-1-Ig (CDK1 antibody) at dilution of 1:1000 incubated at room temperature for 1.5 hours.



1×10^6 HeLa cells were intracellularly stained with 1 ug Anti-Human CDK1 (65182-1-Ig, Clone:POH-1) and CoraLite®488-Conjugated AffiniPure Goat Anti-Mouse IgG(H+L) at dilution 1:1000 (red), or 1 ug Mouse IgG2a Isotype Control (66360-2-Ig, Clone: K11A1B2A2) and CoraLite®488-Conjugated AffiniPure Goat Anti-Mouse IgG(H+L) at dilution 1:1000 (blue). Cells were fixed with 4% PFA and permeabilized with Intracellular Staining Permeabilization Wash Buffer.