

For Research Use Only

Integrin Alpha 3 Monoclonal antibody



Catalog Number: 66070-1-Ig

Featured Product

16 Publications

Basic Information

Catalog Number:

66070-1-Ig

Size:

1600 µg/ml

Source:

Mouse

Isotype:

IgG2a

Immunogen Catalog Number:

AG17293

GenBank Accession Number:

BC150190

GeneID (NCBI):

3675

UNIPROT ID:

P26006

Full Name:

integrin, alpha 3 (antigen CD49C, alpha 3 subunit of VLA-3 receptor)

Calculated MW:

1066 aa, 119 kDa

Observed MW:

120 kDa

Purification Method:

Protein A purification

CloneNo.:

3F9G4

Recommended Dilutions:

WB 1:500-1:2000

IHC 1:2000-1:8000

Applications

Tested Applications:

FC, IHC, WB, ELISA

Cited Applications:

WB, IHC, IF, FC

Species Specificity:

human, pig, mouse

Cited Species:

human, mouse, rabbit, pig

Note-IHC: suggested antigen retrieval with TE buffer pH 9.0; (*) Alternatively, antigen retrieval may be performed with citrate buffer pH 6.0

Positive Controls:

WB : PC-3 cells, A431 cells, A549 cells, HepG2 cells, mouse brain tissue

IHC : human lung cancer tissue,

Background Information

ITGA3, also named as MSK18, CD49c, GAPB3 and FRP-2, belongs to the integrin alpha chain family. It is a receptor for fibronectin, laminin, collagen, epiligrin, thrombospondin and CSPG4. ITGA3 may mediate with LGALS3 the stimulation by CSPG4 of endothelial cells migration. ITGA3 is highly concentrated in epithelial cells where it strongly adheres to Laminin-5 and Laminin-5 induced rapid adhesion can be blocked by antibodies against the alpha-3 integrin subunit. It can be cleaved into heavy chain(840aa) and light chain(176aa). This antibody can recognize the heavy chain.

Notable Publications

Author	Pubmed ID	Journal	Application
Céline Cegarra	36108060	PLoS One	
Kai Guo	34514877	Thyroid	IHC
Siyang Zeng	36281226	iScience	WB

Storage

Storage:

Store at -20°C. Stable for one year after shipment.

Storage Buffer:

PBS with 0.02% sodium azide and 50% glycerol pH 7.3.

Aliquoting is unnecessary for -20°C storage

For technical support and original validation data for this product please contact:

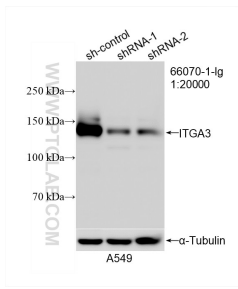
T: 4006900926

E: Proteintech-CN@ptglab.com

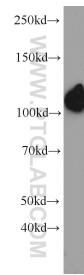
W: ptgcn.com

This product is exclusively available under Proteintech Group brand and is not available to purchase from any other manufacturer.

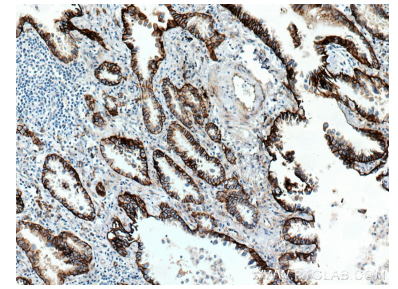
Selected Validation Data



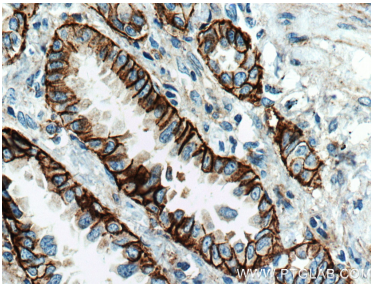
WB result of Integrin Alpha 3 antibody (66070-1-Ig; 1:20000; incubated at room temperature for 1.5 hours) with sh-Control and sh-Integrin Alpha 3 transfected A549 cells.



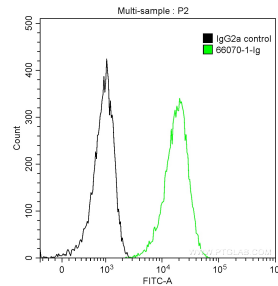
PC-3 cells were subjected to SDS PAGE followed by western blot with 66070-1-Ig (ITGA3 antibody) at dilution of 1:1000 incubated at room temperature for 1.5 hours.



Immunohistochemical analysis of paraffin-embedded human lung cancer tissue slide using 66070-1-Ig (Integrin alpha-3 antibody) at dilution of 1:4000 (under 10x lens. Heat mediated antigen retrieval with Tris-EDTA buffer (pH 9.0).



Immunohistochemical analysis of paraffin-embedded human lung cancer tissue slide using 66070-1-Ig (Integrin alpha-3 antibody) at dilution of 1:4000 (under 40x lens. Heat mediated antigen retrieval with Tris-EDTA buffer (pH 9.0).



1X10⁶ PC-3 cells were stained with 0.2 ug Anti-Human Integrin Alpha 3 (66070-1-Ig, Clone: 3F9G4) and CoraLite®488-Conjugated AffiniPure Goat Anti-Mouse IgG(H+L) at dilution 1:1000 (green), or stained with 0.2 ug Mouse IgG2a Isotype Control and CoraLite®488-Conjugated AffiniPure Goat Anti-Mouse IgG(H+L) at dilution 1:1000 (black). Cells were fixed with 90% MeOH.