

For Research Use Only

GM2A Monoclonal antibody, PBS Only



Catalog Number: 66080-1-PBS

Featured Product

Basic Information

Catalog Number:

66080-1-PBS

Size:

1 mg/ml

Source:

Mouse

Isotype:

IgG2a

Immunogen Catalog Number:

AG4394

GenBank Accession Number:

BC009273

GeneID (NCBI):

2760

UNIPROT ID:

P17900

Full Name:

GM2 ganglioside activator

Calculated MW:

22 kDa

Observed MW:

22 kDa

Purification Method:

Protein A purification

CloneNo.:

1E4D3

Applications

Tested Applications:

WB,FC,ELISA

Species Specificity:

human

Background Information

GM2A, also named as GM2-AP and SAP-3, is the large binding pocket which can accommodate several single chain phospholipids and fatty acids. GM2A also exhibits some calcium-independent phospholipase activity. It plays a key role in the degradation of ganglioside GM2 (GM2). GM2A stimulates only the breakdown of ganglioside GM2 and glycolipid GA2 by beta-hexosaminidase A.

Storage

Storage:

Store at -20°C. Stable for one year after shipment.

Storage Buffer:

PBS only

Aliquoting is unnecessary for -20°C storage

For technical support and original validation data for this product please contact:

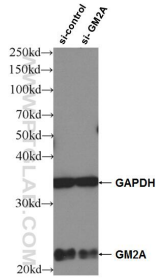
T: 4006900926

E: Proteintech-CN@ptglab.com

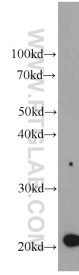
W: ptgcn.com

This product is exclusively available under Proteintech Group brand and is not available to purchase from any other manufacturer.

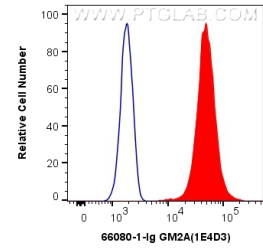
Selected Validation Data



WB result of GM2A antibody (66080-1-Ig; 1:12000; incubated at room temperature for 1.5 hours) with sh-Control and sh-GM2A transfected HeLa cells. This data was developed using the same antibody clone with 66080-1-PBS in a different storage buffer formulation.



HeLa cells were subjected to SDS PAGE followed by western blot with 66080-1-Ig (GM2A antibody) at dilution of 1:500 incubated at room temperature for 1.5 hours. This data was developed using the same antibody clone with 66080-1-PBS in a different storage buffer formulation.



1X10⁶ HEK-293 cells were intracellularly stained with 0.4 ug Anti-Human GM2A (66080-1-Ig, Clone:1E4D3) and CoraLite®488-Conjugated AffiniPure Goat Anti-Mouse IgG(H+L) at dilution 1:1000 (red), or 0.4 ug Mouse IgG2a Isotype Control (C1.18.4) (65208-1-Ig, Clone: C1.18.4) (blue). Cells were fixed with 4% PFA and permeabilized with Flow Cytometry Perm Buffer (PF00011-C). This data was developed using the same antibody clone with 66080-1-PBS in a