

For Research Use Only

# Complement factor B Monoclonal antibody



Catalog Number: 66154-1-Ig

## Basic Information

<b>Catalog Number:</b> 66154-1-Ig	<b>GenBank Accession Number:</b> BC007990	<b>Purification Method:</b> Thiophilic affinity chromatograph
<b>Size:</b> 600 µg/ml	<b>GeneID (NCBI):</b> 629	<b>CloneNo.:</b> 8D2B6
<b>Source:</b> Mouse	<b>UNIPROT ID:</b> P00751	<b>Recommended Dilutions:</b> WB 1:500-1:2000 IHC 1:20-1:200 IF 1:200-1:800
<b>Isotype:</b> IgM	<b>Full Name:</b> complement factor B	
<b>Immunogen Catalog Number:</b> AG19107	<b>Calculated MW:</b> 86 kDa	
	<b>Observed MW:</b> 93 kDa	

## Applications

### Tested Applications:

IF-P, IHC, WB, ELISA

### Species Specificity:

human

**Note-IHC: suggested antigen retrieval with TE buffer pH 9.0; (\*) Alternatively, antigen retrieval may be performed with citrate buffer pH 6.0**

**Mouse monoclonal antibodies of IgM isotype can be detected with "anti-mouse IgG(H+L)" secondary antibodies.**

### Positive Controls:

WB : human blood tissue,

IHC : human liver tissue,

IF : human liver tissue,

## Background Information

Complement factor B (CFB) is a component of the alternative pathway of complement activation. Complement factor B is cleaved into Ba and Bb by factor D in the presence of C3b. The active subunit Bb is a serine protease which associates with C3b to form the alternative pathway C3 convertase. Bb is involved in the proliferation of preactivated B lymphocytes, while Ba inhibits their proliferation.

## Storage

### Storage:

Store at -20°C. Stable for one year after shipment.

### Storage Buffer:

PBS with 0.02% sodium azide and 50% glycerol pH 7.3.

Aliquoting is unnecessary for -20°C storage

For technical support and original validation data for this product please contact:

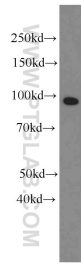
T: 4006900926

E: [Proteintech-CN@ptglab.com](mailto:Proteintech-CN@ptglab.com)

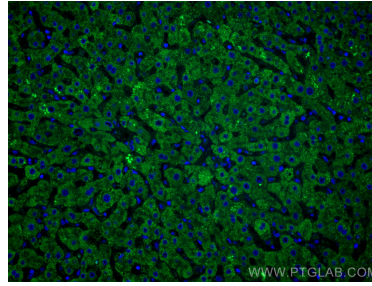
W: [ptgcn.com](http://ptgcn.com)

**This product is exclusively available under Proteintech Group brand and is not available to purchase from any other manufacturer.**

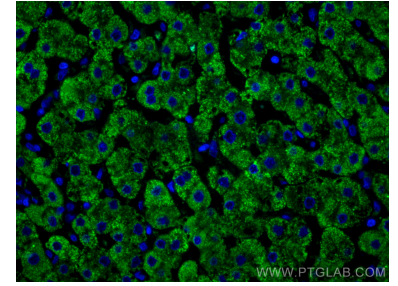
## Selected Validation Data



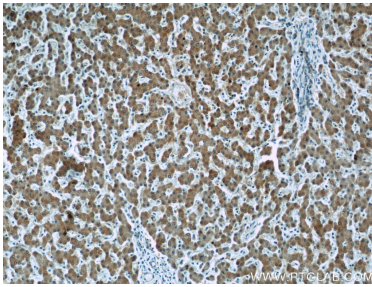
human blood were subjected to SDS PAGE followed by western blot with 66154-1-Ig (Complement factor B antibody) at dilution of 1:1000 incubated at room temperature for 1.5 hours.



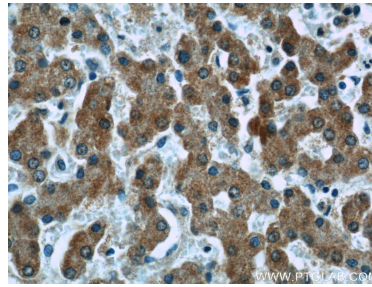
Immunofluorescent analysis of (4% PFA) fixed human liver tissue using Complement factor B antibody (66154-1-Ig, Clone: 8D2B6) at dilution of 1:400 and CoraLite®488-Conjugated AffiniPure Goat Anti-Mouse IgG(H+L).



Immunofluorescent analysis of (4% PFA) fixed human liver tissue using Complement factor B antibody (66154-1-Ig, Clone: 8D2B6) at dilution of 1:400 and CoraLite®488-Conjugated AffiniPure Goat Anti-Mouse IgG(H+L).



Immunohistochemical analysis of paraffin-embedded human liver tissue slide using 66154-1-Ig (Complement factor B antibody) at dilution of 1:50 (under 10x lens).



Immunohistochemical analysis of paraffin-embedded human liver tissue slide using 66154-1-Ig (Complement factor B antibody) at dilution of 1:50 (under 40x lens).