

For Research Use Only

LBP Monoclonal antibody

Catalog Number: 66181-1-Ig



Basic Information

Catalog Number: 66181-1-Ig	GenBank Accession Number: BC022256	Purification Method: Protein A purification
Size: 1200 μ g/ml	GeneID (NCBI): 3929	CloneNo.: 3A7E3
Source: Mouse	UNIPROT ID: P18428	Recommended Dilutions: WB 1:500-1:2000 IHC 1:250-1:1000
Isotype: IgG2b	Full Name: lipopolysaccharide binding protein	
Immunogen Catalog Number: AG13485	Calculated MW: 481 aa, 53 kDa	
	Observed MW: 60 kDa	

Applications

Tested Applications:

IHC, WB, ELISA

Species Specificity:

human

Note-IHC: suggested antigen retrieval with TE buffer pH 9.0; (*) Alternatively, antigen retrieval may be performed with citrate buffer pH 6.0

Positive Controls:

WB : Jurkat cells,

IHC : human liver cancer tissue, human liver tissue, human kidney tissue

Background Information

LBP (lipopolysaccharide-binding protein) is an acute-phase protein, predominantly synthesized by hepatocytes. It is present in normal serum at concentrations of 5 to 10 μ g/ml, rising up to 200 μ g/ml 24 h after induction of an acute-phase response. LBP binds to the lipid A moiety of bacterial lipopolysaccharides (LPS), a glycolipid present in the outer membrane of all Gram-negative bacteria, and acts as an affinity enhancer for CD14, facilitating its association with LPS. (PMID: 9665271; 11598069)

Storage

Storage:

Store at -20°C. Stable for one year after shipment.

Storage Buffer:

PBS with 0.02% sodium azide and 50% glycerol pH 7.3.

Aliquoting is unnecessary for -20°C storage

For technical support and original validation data for this product please contact:

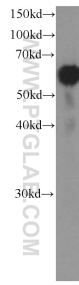
T: 4006900926

E: Proteintech-CN@ptglab.com

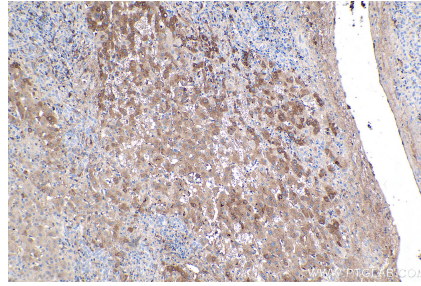
W: ptgcn.com

This product is exclusively available under Proteintech Group brand and is not available to purchase from any other manufacturer.

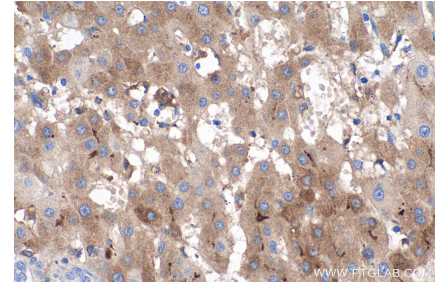
Selected Validation Data



Jurkat cells were subjected to SDS PAGE followed by western blot with 66181-1-Ig (LBP Antibody) at dilution of 1:1000 incubated at room temperature for 1.5 hours.



Immunohistochemical analysis of paraffin-embedded human liver cancer tissue slide using 66181-1-Ig (LBP antibody) at dilution of 1:500 (under 10x lens). Heat mediated antigen retrieval with Tris-EDTA buffer (pH 9.0).



Immunohistochemical analysis of paraffin-embedded human liver cancer tissue slide using 66181-1-Ig (LBP antibody) at dilution of 1:500 (under 40x lens). Heat mediated antigen retrieval with Tris-EDTA buffer (pH 9.0).