

For Research Use Only

Apolipoprotein AI Monoclonal antibody

Catalog Number: 66206-1-Ig

12 Publications



Basic Information

Catalog Number:

66206-1-Ig

Concentration:

1451 ug/ml

Source:

Mouse

Isotype:

IgG2b

Immunogen Catalog Number:

AG21920

GenBank Accession Number:

BC005380

GeneID (NCBI):

335

UNIPROT ID:

P02647

Full Name:

apolipoprotein A-I

Calculated MW:

31 kDa

Observed MW:

26-28 kDa

Purification Method:

Protein A purification

CloneNo.:

1C9G5

Recommended Dilutions:

WB 1:1000-1:4000

IHC 1:50-1:500

IF/ICC 1:50-1:500

Applications

Tested Applications:

WB, IHC, IF/ICC, FC (Intra), ELISA

Cited Applications:

WB, IHC

Species Specificity:

human, mouse

Cited Species:

human, mouse, rat

Note-IHC: suggested antigen retrieval with TE buffer pH 9.0; (*) Alternatively, antigen retrieval may be performed with citrate buffer pH 6.0

Positive Controls:

WB : human plasma tissue,

IHC : human liver cancer tissue, mouse kidney tissue

IF/ICC : HepG2 cells,

Background Information

ApoA1 is a major protein component of high density lipoproteins (HDL) which is associated with reversed cholesterol transport, lipid/cholesterol binding, lecithin/cholesterol acyltransferase (LCAT) activation and specific receptors binding. It is synthesized in the liver and small intestine. Defects of ApoA1 cause low HDL level and systemic non-neuropathic amyloidosis. Serum concentration of ApoA1 is inversely related to the risk of developing atherosclerosis. This antibody was generated against the C-terminal region of human ApoA1.

Notable Publications

Author	Pubmed ID	Journal	Application
Hideaki Morishita	31526472	Elife	WB
Ying Zhang	36172518	Front Nutr	WB
Zhonghao Li	36498935	Int J Mol Sci	WB

Storage

Storage:

Store at -20°C. Stable for one year after shipment.

Storage Buffer:

PBS with 0.02% sodium azide and 50% glycerol, pH7.3

Aliquoting is unnecessary for -20°C storage

For technical support and original validation data for this product please contact:

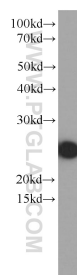
T: 4006900926

E: Proteintech-CN@ptglab.com

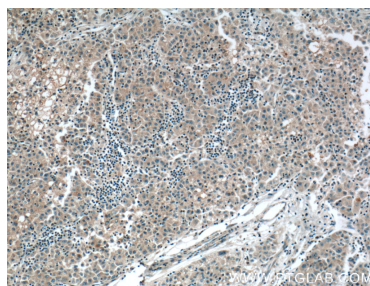
W: ptgcn.com

This product is exclusively available under Proteintech Group brand and is not available to purchase from any other manufacturer.

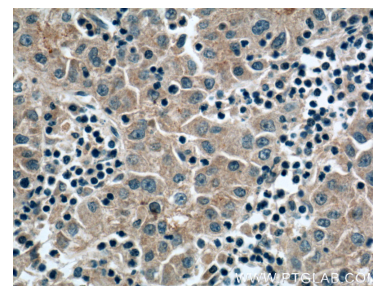
Selected Validation Data



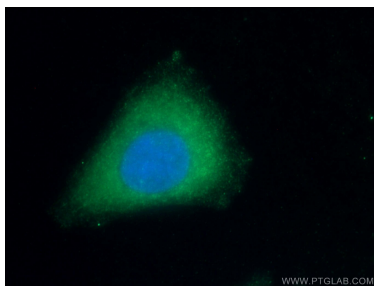
human plasma were subjected to SDS PAGE followed by western blot with 66206-1-Ig (APOA1 Antibody) at dilution of 1:2000 incubated at room temperature for 1.5 hours.



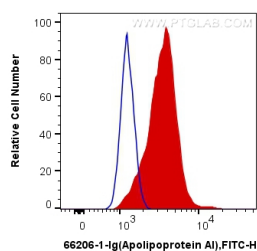
Immunohistochemical analysis of paraffin-embedded human liver cancer tissue slide using 66206-1-Ig (APOA1 Antibody) at dilution of 1:400 (under 10x lens). Heat mediated antigen retrieval with Tris-EDTA buffer (pH 9.0).



Immunohistochemical analysis of paraffin-embedded human liver cancer tissue slide using 66206-1-Ig (APOA1 Antibody) at dilution of 1:400 (under 40x lens). Heat mediated antigen retrieval with Tris-EDTA buffer (pH 9.0).



Immunofluorescent analysis of (-20°C Ethanol) fixed HepG2 cells using 66206-1-Ig (APOA1 antibody) at dilution of 1:100 and Alexa Fluor 488-conjugated AffiniPure Goat Anti-Mouse IgG(H+L).



1X10⁶ HepG2 cells were intracellularly stained with 0.4 ug Anti-Human Apolipoprotein AI (66206-1-Ig, Clone:1C9G5) and CoraLite®488-Conjugated AffiniPure Goat Anti-Mouse IgG(H+L) at dilution 1:1000 (red), or 0.4 ug Control Antibody. Cells were fixed with 4% PFA and permeabilized with Flow Cytometry Perm Buffer (PF00011-C).