

Gamma Tubulin Monoclonal antibody

Catalog Number: 66320-1-Ig

21 Publications

Basic Information

Catalog Number:

66320-1-Ig

Size:

1000 µg/ml

Source:

Mouse

Isotype:

IgG2a

Immunogen Catalog Number:

AG23913

GenBank Accession Number:

BC000619

GeneID (NCBI):

7283

UNIPROT ID:

P23258

Full Name:

tubulin, gamma 1

Calculated MW:

51 kDa

Observed MW:

48-55 kDa

Purification Method:

Protein A purification

CloneNo.:

3F9H8

Recommended Dilutions:

WB 1:2000-1:12000

IHC 1:200-1:1000

IF 1:50-1:500

Applications

Tested Applications:

FC, IF/ICC, IHC, WB, ELISA

Cited Applications:

IF, WB

Species Specificity:

human, Canine, mouse, rat

Cited Species:

human, mouse

Note-IHC: suggested antigen retrieval with TE buffer pH 9.0; (*) Alternatively, antigen retrieval may be performed with citrate buffer pH 6.0

Positive Controls:

WB : NCCIT cells, HepG2 cells, EC109 cells, K-562 cells, HSCT6 cells, NIH3T3 cells

IHC : human breast cancer tissue, human prostate cancer tissue

IF : MDCK cells, HeLa cells, A549 cells

Background Information

Gamma tubulin is a member of tubulin superfamily and is a key component required for microtubule nucleation and stabilization. It is concentrated at the pericentriolar material of centrosomes in interphase cells, predominantly on spindle poles in mitotic cells, while found in midbodies during cytokinesis. Overexpression of gamma tubulin has been found in various cancers including breast cancer and gliomas. This antibody can well label the centrosome structure.

Notable Publications

Author	Pubmed ID	Journal	Application
Yanli Liu	36238304	Front Immunol	IF
Emma Polonio-Alcalá	34771484	Cancers (Basel)	WB
Michaela Bosakova	33200460	EMBO Mol Med	IF

Storage

Storage:

Store at -20°C. Stable for one year after shipment.

Storage Buffer:

PBS with 0.02% sodium azide and 50% glycerol pH 7.3.

Aliquoting is unnecessary for -20°C storage

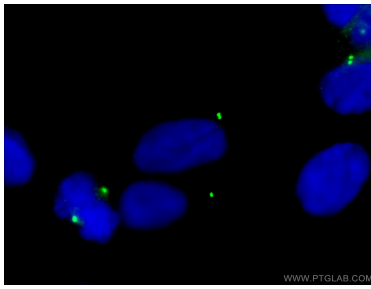
For technical support and original validation data for this product please contact:

T: 4006900926

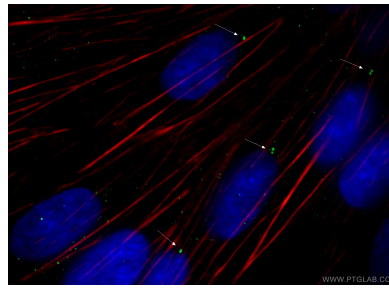
E: Proteintech-CN@ptglab.comW: ptgcn.com

This product is exclusively available under Proteintech Group brand and is not available to purchase from any other manufacturer.

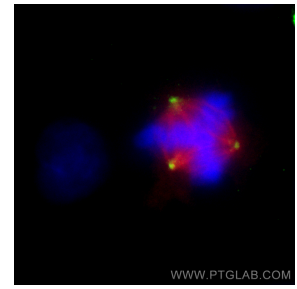
Selected Validation Data



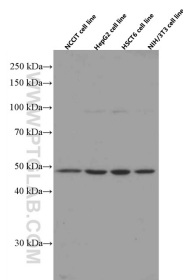
Immunofluorescent analysis of (-20°C Ethanol) fixed MDCK cells using 66320-1-Ig (gamma tubulin antibody) at dilution of 1:200 and CoraLite488-Conjugated AffiniPure Goat Anti-Mouse IgG(H+L).



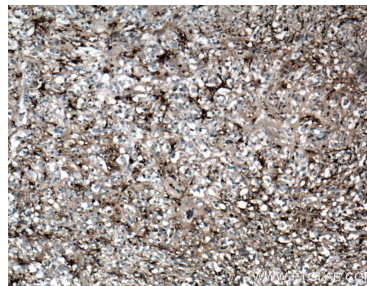
Immunofluorescent analysis of (-20°C Ethanol) fixed MDCK cells using 66320-1-Ig (gamma tubulin antibody) at dilution of 1:200 and CoraLite488-Conjugated AffiniPure Goat Anti-Mouse IgG(H+L).



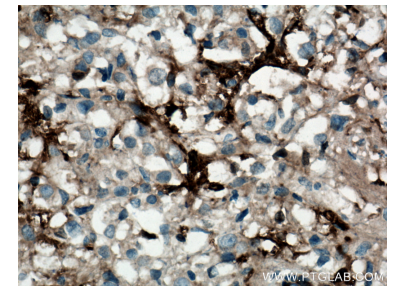
Immunofluorescent analysis of (-20°C Methanol) fixed A549 cells using Gamma Tubulin antibody (66320-1-Ig, Clone: 3F9H8) at dilution of 1:1000 and CoraLite®488-Conjugated AffiniPure Goat Anti-Mouse IgG(H+L), Alpha Tubulin antibody (11224-1-AP, red).



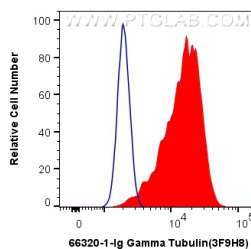
Various lysates were subjected to SDS PAGE followed by western blot with 66320-1-Ig (gamma tubulin antibody) at dilution of 1:6000 incubated at room temperature for 1.5 hours.



Immunohistochemical analysis of paraffin-embedded human breast cancer tissue slide using 66320-1-Ig (gamma tubulin antibody) at dilution of 1:500 (under 10x lens. Heat mediated antigen retrieval with Tris-EDTA buffer (pH 9.0).



Immunohistochemical analysis of paraffin-embedded human breast cancer tissue slide using 66320-1-Ig (gamma tubulin antibody) at dilution of 1:500 (under 40x lens. Heat mediated antigen retrieval with Tris-EDTA buffer (pH 9.0).



1X10⁶ HeLa cells were intracellularly stained with 0.4 ug Anti-Human Gamma Tubulin (66320-1-Ig, Clone:3F9H8) and CoraLite®488-Conjugated AffiniPure Goat Anti-Mouse IgG(H+L) at dilution 1:1000 (red), or 0.4 ug Mouse IgG2a Isotype Control (C1.18.4) (65208-1-Ig, Clone: C1.18.4) (blue). Cells were fixed with 4% PFA and permeabilized with Flow Cytometry Perm Buffer (PF00011-C).