

For Research Use Only

Glutamine Synthetase Monoclonal antibody



Catalog Number: 66323-2-Ig

Featured Product

Basic Information

Catalog Number:

66323-2-Ig

Size:

1300 µg/ml

Source:

Mouse

Isotype:

IgG1

Immunogen Catalog Number:

AG6309

GenBank Accession Number:

BC011700

GeneID (NCBI):

2752

UNIPROT ID:

P15104

Full Name:

glutamate-ammonia ligase
(glutamine synthetase)

Calculated MW:

374 aa, 42 kDa

Observed MW:

42 kDa

Purification Method:

Protein A purification

CloneNo.:

1B6G4

Recommended Dilutions:

WB 1:500-1:2000

IHC 1:2500-1:10000

IF 1:200-1:800

Applications

Tested Applications:

FC, IF-P, IHC, WB, ELISA

Species Specificity:

Human, mouse, rat

Note-IHC: suggested antigen retrieval with TE buffer pH 9.0; (*) Alternatively, antigen retrieval may be performed with citrate buffer pH 6.0

Positive Controls:

WB: Jurkat cells,

IHC: human liver cancer tissue, rat liver tissue, mouse liver tissue

IF: mouse liver tissue,

Background Information

Storage

Storage:

Store at -20°C. Stable for one year after shipment.

Storage Buffer:

PBS with 0.02% sodium azide and 50% glycerol pH 7.3.

Aliquoting is unnecessary for -20°C storage

For technical support and original validation data for this product please contact:

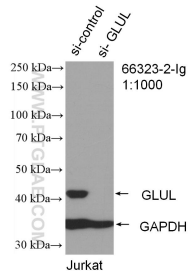
T: 4006900926

E: Proteintech-CN@ptglab.com

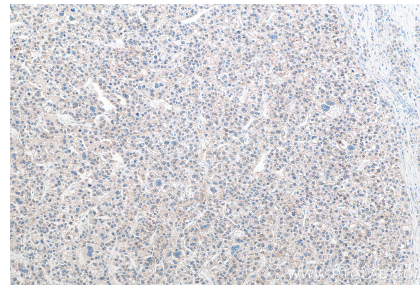
W: ptgcn.com

This product is exclusively available under Proteintech Group brand and is not available to purchase from any other manufacturer.

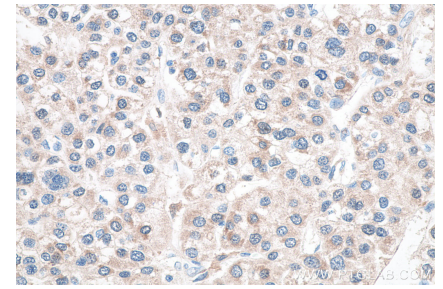
Selected Validation Data



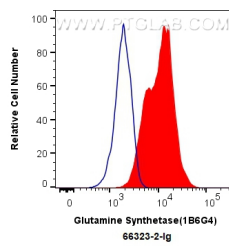
WB result of Glutamine synthetase antibody (66323-2-Ig; 1:1000; incubated at room temperature for 1.5 hours) with sh-Control and sh-Glutamine synthetase transfected Jurkat cells.



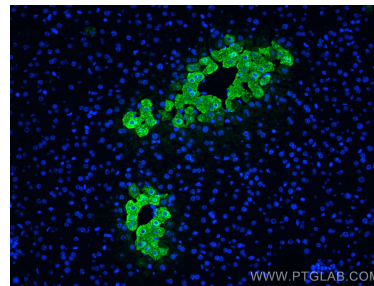
Immunohistochemical analysis of paraffin-embedded human liver cancer tissue slide using 66323-2-Ig (Glutamine Synthetase antibody) at dilution of 1:5000 (under 10x lens). Heat mediated antigen retrieval with Tris-EDTA buffer (pH 9.0).



Immunohistochemical analysis of paraffin-embedded human liver cancer tissue slide using 66323-2-Ig (Glutamine Synthetase antibody) at dilution of 1:5000 (under 40x lens). Heat mediated antigen retrieval with Tris-EDTA buffer (pH 9.0).



1X10⁶ HepG2 cells were intracellularly stained with 0.4 ug Anti-Human Glutamine Synthetase (66323-2-Ig, Clone:1B6G4) and CoraLite@488-Conjugated AffiniPure Goat Anti-Mouse IgG(H+L) at dilution 1:1000 (red), or 0.4 ug Mouse IgG1 Isotype Control (MOPC-21) (65124-1-Ig, Clone: MOPC-21) (blue). Cells were fixed with 4% PFA and permeabilized with Flow Cytometry Perm Buffer (PF00011-C).



Immunofluorescent analysis of (4% PFA) fixed mouse liver tissue using Glutamine Synthetase antibody (66323-2-Ig, Clone: 1B6G4) at dilution of 1:400 and CoraLite@488-Conjugated AffiniPure Goat Anti-Mouse IgG(H+L).