

For Research Use Only

BCL6 Monoclonal antibody

Catalog Number: 66340-1-Ig **8 Publications**



Basic Information

Catalog Number: 66340-1-Ig	GenBank Accession Number: BC150184	Purification Method: Protein G purification
Concentration: 1500 ug/ml	GeneID (NCBI): 604	CloneNo.: 1E6B1
Source: Mouse	UNIPROT ID: P41182	Recommended Dilutions: WB 1:5000-1:50000 IHC 1:2000-1:8000
Isotype: IgG1	Full Name: B-cell CLL/lymphoma 6	
Immunogen Catalog Number: AG15519	Calculated MW: 706 aa, 79 kDa Observed MW: 85 kDa	

Applications

Tested Applications: WB, IHC, ELISA	Positive Controls: WB : Daudi cells, Raji cells, Ramos cells IHC : human tonsillitis tissue,
Cited Applications: WB, IHC, IF	
Species Specificity: human	
Cited Species: human, mouse	
Note-IHC: suggested antigen retrieval with TE buffer pH 9.0; (*) Alternatively, antigen retrieval may be performed with citrate buffer pH 6.0	

Background Information

BCL6, a zinc finger transcription factor, contains an N-terminal BTB/POZ domain and C-terminal zinc finger DNA-binding motifs and represses transcription of a wide range of target proteins and microRNAs. BCL6 protein has been reported as a master regulator of B lymphocyte development and growth, and altered BCL6 protein expression was implicated in pathogenesis of diverse human hematologic malignancies, especially in the diffuse large B cell lymphoma (DLBCL). BCL6 is required for the development of T follicular helper T cells (TFH), a helper T cell subset required for the formation of mature and productive GCs. BCL6 has also been shown to play important regulatory roles in macrophages.

Notable Publications

Author	Pubmed ID	Journal	Application
Johannes Griss	31519915	Nat Commun	IF
Franziska Werner	34248957	Front Immunol	IHC, IF
Zhou Qi	35875161	Front Oncol	IHC

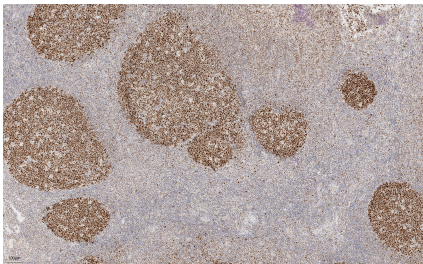
Storage

Storage:
Store at -20°C. Stable for one year after shipment.
Storage Buffer:
PBS with 0.02% sodium azide and 50% glycerol, pH7.3
Aliquoting is unnecessary for -20°C storage

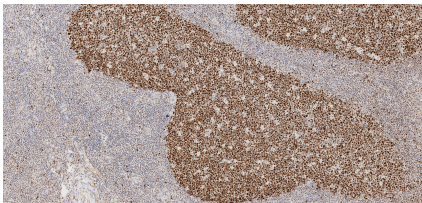
For technical support and original validation data for this product please contact:
T: 4006900926 E: Proteintech-CN@ptglab.com W: ptgcn.com

This product is exclusively available under Proteintech Group brand and is not available to purchase from any other manufacturer.

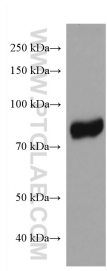
Selected Validation Data



Immunohistochemical analysis of paraffin-embedded human tonsillitis tissue slide using 66340-1-Ig (BCL6 antibody) at dilution of 1:4000 (under 4x lens). Heat mediated antigen retrieval with Tris-EDTA buffer (pH 9.0).



Immunohistochemical analysis of paraffin-embedded human tonsillitis tissue slide using 66340-1-Ig (BCL6 antibody) at dilution of 1:4000 (under 10x lens). Heat mediated antigen retrieval with Tris-EDTA buffer (pH 9.0).



Daudi cells were subjected to SDS PAGE followed by western blot with 66340-1-Ig (BCL6 antibody) at dilution of 1:15000 incubated at room temperature for 1.5 hours.