

ERp72 Monoclonal antibody

Catalog Number: 66365-1-Ig 4 Publications

Basic Information

Catalog Number: 66365-1-Ig	GenBank Accession Number: BC000425	Purification Method: Protein G purification
Size: 1000 µg/ml	GeneID (NCBI): 9601	CloneNo.: 1D5F3
Source: Mouse	UNIPROT ID: P13667	Recommended Dilutions: WB 1:2000-1:10000 IHC 1:250-1:1000
Isotype: IgG1	Full Name: protein disulfide isomerase family A, member 4	
Immunogen Catalog Number: AG6873	Calculated MW: 73 kDa	
	Observed MW: 72 kDa	

Applications

Tested Applications: IHC, WB, ELISA	Positive Controls:
Cited Applications: WB, IF	WB : A431 cells, JAR cells, HEK-293 cells
Species Specificity: human	IHC : human liver cancer tissue,
Cited Species: human, mouse	
Note-IHC: suggested antigen retrieval with TE buffer pH 9.0; (*) Alternatively, antigen retrieval may be performed with citrate buffer pH 6.0	

Background Information

PDIA4 (Protein disulfide-isomerase A4) is also named ERP70, ERP72, and belongs to the protein disulfide isomerase family. It catalyzes the rearrangement of -S-S- bonds in proteins. ERp72 is a soluble protein localized in the ER lumen and contains the COOH-terminal retention signal, KEEL. There are 6 cysteine residues in the amino acid sequences of mouse and human ERp72. All of the cysteine residues occur in the internal thioredoxin motif, CGHC(PMID:15475357). The full-length protein has a signal peptide with 20 amino acids.

Notable Publications

Author	Pubmed ID	Journal	Application
Wenjie Hu	34109212	Front Mol Biosci	IF
Jia Song	30606233	J Exp Clin Cancer Res	IF
Jing Liao	33813851	Hypertension	IF

Storage

Storage:
Store at -20°C. Stable for one year after shipment.

Storage Buffer:
PBS with 0.02% sodium azide and 50% glycerol pH 7.3.

Aliquoting is unnecessary for -20°C storage

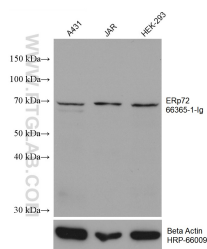
For technical support and original validation data for this product please contact:

T: 4006900926

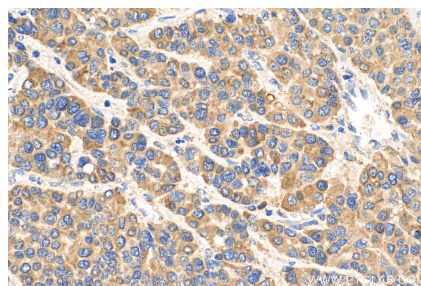
E: Proteintech-CN@ptglab.comW: ptgcn.com

This product is exclusively available under Proteintech Group brand and is not available to purchase from any other manufacturer.

Selected Validation Data



Various lysates were subjected to SDS PAGE followed by western blot with 66365-1-Ig (ERp72 antibody) at dilution of 1:4900 incubated at room temperature for 1.5 hours. The membrane was stripped and reblotted with HRP-conjugated Beta Actin Monoclonal antibody (HRP-66009) as loading control.



Immunohistochemical analysis of paraffin-embedded human liver cancer tissue slide using 66365-1-Ig (ERp72 antibody) at dilution of 1:500 (under 40x lens). Heat mediated antigen retrieval with Tris-EDTA buffer (pH 9.0).