

# VDAC2 Monoclonal antibody

Catalog Number: 66388-1-Ig 2 Publications

## Basic Information

**Catalog Number:**

66388-1-Ig

**Size:**

1500 µg/ml

**Source:**

Mouse

**Isotype:**

IgG1

**GenBank Accession Number:**

NM\_003375

**GeneID (NCBI):**

7417

**UNIPROT ID:**

P45880

**Full Name:**

voltage-dependent anion channel 2

**Calculated MW:**

33 kDa

**Observed MW:**

30-33 kDa

**Purification Method:**

Protein G purification

**CloneNo.:**

1D8C11

**Recommended Dilutions:**

WB 1:1000-1:4000

IHC 1:50-1:500

## Applications

**Tested Applications:**

IHC, WB, ELISA

**Cited Applications:**

WB, IHC

**Species Specificity:**

human, mouse, rat

**Cited Species:**

human, mouse

**Note-IHC:** suggested antigen retrieval with **TE buffer pH 9.0; (\*) Alternatively, antigen retrieval may be performed with citrate buffer pH 6.0**

**Positive Controls:**

WB : HEK-293 cells, ROS1728 cells

IHC : human heart tissue, human kidney tissue, human liver tissue

## Background Information

VDAC2 belongs to the eukaryotic mitochondrial porin family. It forms a channel through the mitochondrial outer membrane that allows diffusion of small hydrophilic molecules.

## Notable Publications

Author	Pubmed ID	Journal	Application
Fuhao Huang	35853302	Phytomedicine	WB, IHC
Yanbo Xie	35466412	Drug Dev Res	WB

## Storage

**Storage:**

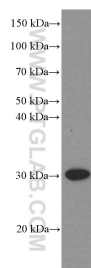
Store at -20°C. Stable for one year after shipment.

**Storage Buffer:**

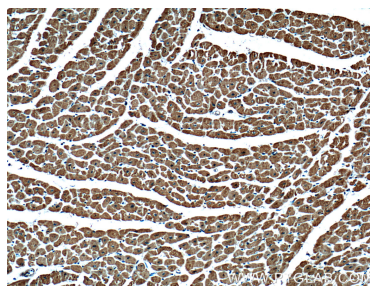
PBS with 0.02% sodium azide and 50% glycerol pH 7.3.

Aliquoting is unnecessary for -20°C storage

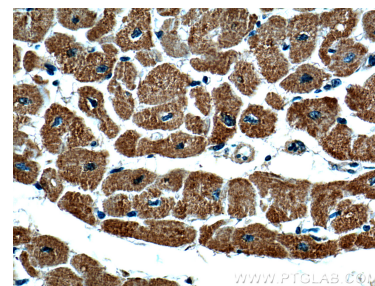
## Selected Validation Data



HEK-293 cells were subjected to SDS PAGE followed by western blot with 66388-1-Ig (VDAC2 Antibody) at dilution of 1:2000 incubated at room temperature for 1.5 hours.



Immunohistochemical analysis of paraffin-embedded human heart tissue slide using 66388-1-Ig (VDAC2 Antibody) at dilution of 1:200 (under 10x lens).



Immunohistochemical analysis of paraffin-embedded human heart tissue slide using 66388-1-Ig (VDAC2 Antibody) at dilution of 1:200 (under 40x lens).