

For Research Use Only

PDI Monoclonal antibody

Catalog Number: 66422-1-Ig **13 Publications**



Basic Information

Catalog Number: 66422-1-Ig	GenBank Accession Number: BC014504	Purification Method: Protein A purification
Size: 1600 µg/ml	GeneID (NCBI): 5034	CloneNo.: 2E6A11
Source: Mouse	UNIPROT ID: P07237	Recommended Dilutions: WB 1:10000-1:100000 IHC 1:100-1:400 IF 1:200-1:800
Isotype: IgG2b	Full Name: prolyl 4-hydroxylase, beta polypeptide	
Immunogen Catalog Number: AG1747	Calculated MW: 57 kDa	
	Observed MW: 57 kDa	

Applications

Tested Applications: IF/ICC, IHC, WB, ELISA	Positive Controls:
Cited Applications: IF, WB	WB : HEK-293 cells, rat brain tissue, HepG2 cells, L02 cells, COLO 320 cells
Species Specificity: human, pig, mouse, rat	IHC : human liver tissue, human small intestine tissue
Cited Species: human, mouse, bovine	IF : HepG2 cells,
Note-IHC: suggested antigen retrieval with TE buffer pH 9.0; (*) Alternatively, antigen retrieval may be performed with citrate buffer pH 6.0	

Background Information

PDIA1 (Protein disulfide-isomerase) is also named as ERBA2L, PDI, P4HB, PO4DB. It is a multifunctional protein that catalyzes the formation, breakage and rearrangement of disulfide bonds. In some cell types, it seems to be secreted or associated with the plasma membrane, where it undergoes constant shedding and replacement from intracellular sources. It can exist as homodimer and monomers and homotetramers may also occur (PMID:12095988).

Notable Publications

Author	Pubmed ID	Journal	Application
Janine McCaughey	34350936	J Cell Sci	IF
Tianmiao Huang	34743989	Biochim Biophys Acta Gen Subj	IF
Xiaofan Jia	34672633	Mol Pharm	WB

Storage

Storage:
Store at -20°C. Stable for one year after shipment.
Storage Buffer:
PBS with 0.02% sodium azide and 50% glycerol pH 7.3.
Aliquoting is unnecessary for -20°C storage

For technical support and original validation data for this product please contact:

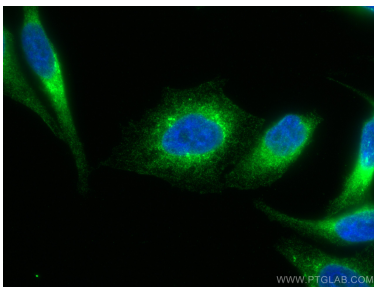
T: 4006900926

E: Proteintech-CN@ptglab.com

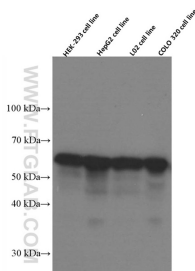
W: ptgcn.com

This product is exclusively available under Proteintech Group brand and is not available to purchase from any other manufacturer.

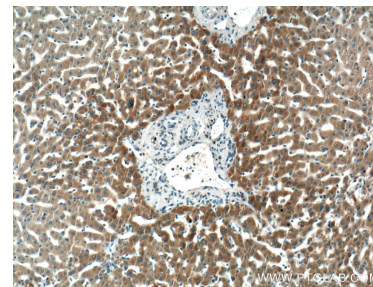
Selected Validation Data



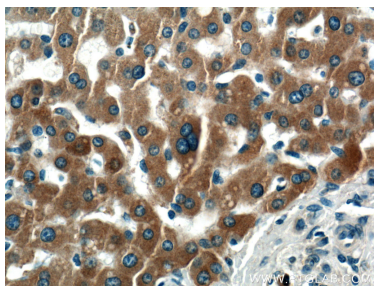
Immunofluorescent analysis of (4% PFA) fixed HepG2 cells using PDI antibody (66422-1-Ig, Clone: 2E6A11) at dilution of 1:400 and CoralLite®488-Conjugated AffiniPure Goat Anti-Mouse IgG(H+L).



HEK-293 cells were subjected to SDS PAGE followed by western blot with 66422-1-Ig (PDI Antibody) at dilution of 1:50000 incubated at room temperature for 1.5 hours.



Immunohistochemical analysis of paraffin-embedded human liver tissue slide using 66422-1-Ig (PDI Antibody) at dilution of 1:200 (under 10x lens).



Immunohistochemical analysis of paraffin-embedded human liver tissue slide using 66422-1-Ig (PDI Antibody) at dilution of 1:200 (under 40x lens).