

ERp57/ERp60 Monoclonal antibody

Catalog Number: 66423-1-Ig

Basic Information

Catalog Number: 66423-1-Ig	GenBank Accession Number: BC014433	Purification Method: Protein G purification
Size: 1500 µg/ml	GeneID (NCBI): 2923	CloneNo.: 3G4G7
Source: Mouse	UNIPROT ID: P30101	Recommended Dilutions: WB 1:2000-1:20000 IHC 1:200-1:800 IF 1:400-1:1600
Isotype: IgG1	Full Name: protein disulfide isomerase family A, member 3	
Immunogen Catalog Number: AG8741	Calculated MW: 505 aa, 57 kDa	
	Observed MW: 57 kDa, 60 kDa	

Applications

Tested Applications:
IF/ICC, IHC, WB, ELISASpecies Specificity:
human, mouse, rat

Note-IHC: suggested antigen retrieval with TE buffer pH 9.0; (*) Alternatively, antigen retrieval may be performed with citrate buffer pH 6.0

Positive Controls:

WB : U2OS cells, HeLa cells, HEK-293 cells, Jurkat cells, RAW 264.7 cells, LNCaP cells, K-562 cells, HSC-T6 cells, PC-12 cells, NIH/3T3 cells

IHC : human lung cancer tissue, human liver cancer tissue

IF : HEK-293 cells,

Background Information

PDIA3, also named as P58, ER60, ERp57, ERp60, ERp61, GRP57, GRP58 and PI-PLC, is a member of the PDI family, participates in the oxidation, reduction, and isomerization of disulfide bonds for correct folding of secretory proteins before modification and transport in the endoplasmic reticulum. It is associated with apoptosis or inhibition of cancer cell growth. PDIA3 was once thought to be a phospholipase; however, it has been demonstrated that this protein actually has protein disulfide isomerase activity. It is thought that complexes of lectins and PDIA3 mediate protein folding by promoting formation of disulfide bonds in their glycoprotein substrates.

Storage

Storage:

Store at -20°C. Stable for one year after shipment.

Storage Buffer:

PBS with 0.02% sodium azide and 50% glycerol pH 7.3.

Aliquoting is unnecessary for -20°C storage

For technical support and original validation data for this product please contact:

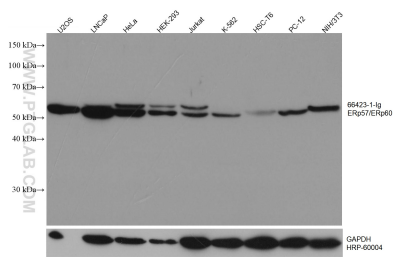
T: 4006900926

E: Proteintech-CN@ptglab.com

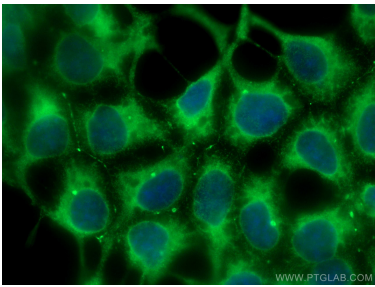
W: ptgcn.com

This product is exclusively available under Proteintech Group brand and is not available to purchase from any other manufacturer.

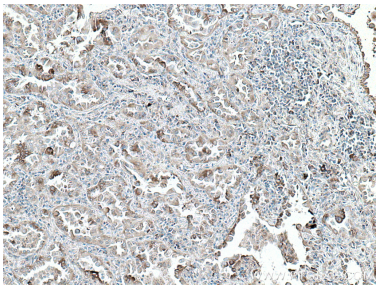
Selected Validation Data



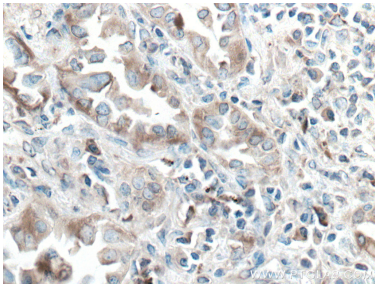
Various lysates were subjected to SDS PAGE followed by western blot with 66423-1-Ig (ERp57/ERp60 antibody) at dilution of 1:9700 incubated at room temperature for 1.5 hours. The membrane was stripped and reblotted with HRP-conjugated GAPDH Monoclonal antibody (HRP-60004) as loading control.



Immunofluorescent analysis of (-20°C Methanol) fixed HEK-293 cells using ERp57/ERp60 antibody (66423-1-Ig, Clone: 3G4G7) at dilution of 1:800 and CoraLite®488-Conjugated AffiniPure Goat Anti-Mouse IgG(H+L).



Immunohistochemical analysis of paraffin-embedded human lung cancer tissue slide using 66423-1-Ig (ERp57/ERp60 antibody) at dilution of 1:400 (under 10x lens). Heat mediated antigen retrieval with Tris-EDTA buffer (pH 9.0).



Immunohistochemical analysis of paraffin-embedded human lung cancer tissue slide using 66423-1-Ig (ERp57/ERp60 antibody) at dilution of 1:400 (under 40x lens). Heat mediated antigen retrieval with Tris-EDTA buffer (pH 9.0).