

For Research Use Only

MFF Monoclonal antibody, PBS Only

Catalog Number: 66527-1-PBS



Basic Information

Catalog Number: 66527-1-PBS	GenBank Accession Number: BC000797	Purification Method: Protein A purification
Size: 1 mg/ml	GeneID (NCBI): 56947	CloneNo.: 1G4B12
Source: Mouse	UNIPROT ID: Q9GZY8	
Isotype: IgG1	Full Name: mitochondrial fission factor	
Immunogen Catalog Number: AG9990	Calculated MW: 38 kDa	
	Observed MW: 35-38 kDa	

Applications

Tested Applications:
WB, Indirect ELISA, IHC, IF

Species Specificity:
Human, pig, rat, mouse

Background Information

MFF (mitochondrial fission factor) is a mitochondrial outer membrane protein that is involved in mitochondrial localization of Drp1 and mitochondrial fission. Multiple isoforms of MFF exist due to the alternative splicing. This antibody recognizes the endogenous MFF protein around 26-29 kDa and 35-38 kDa.

Storage

Storage:
Store at -80°C.

Storage Buffer:
PBS Only

For technical support and original validation data for this product please contact:

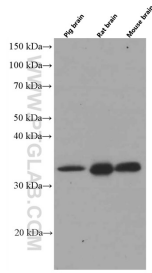
T: 4006900926

E: Proteintech-CN@ptglab.com

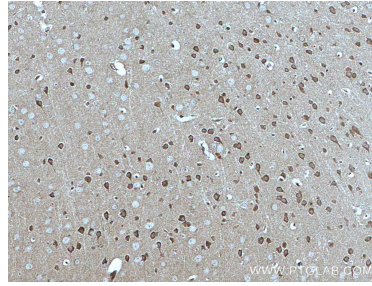
W: ptgcn.com

This product is exclusively available under Proteintech Group brand and is not available to purchase from any other manufacturer.

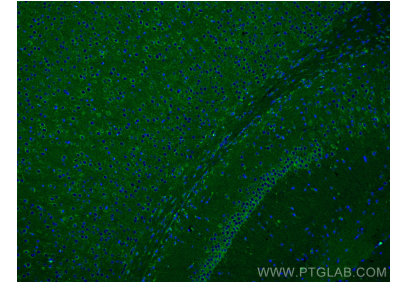
Selected Validation Data



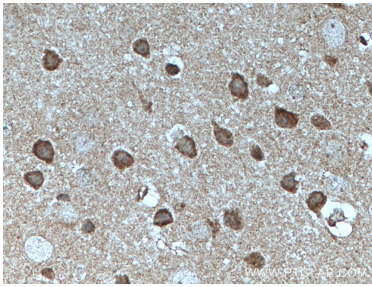
pig/rat/mouse brain tissues were subjected to SDS PAGE followed by western blot with 66527-1-Ig (MFF antibody) at dilution of 1:5000 incubated at room temperature for 1.5 hours. This data was developed using the same antibody clone with 66527-1-PBS in a different storage buffer formulation.



Immunohistochemical analysis of paraffin-embedded mouse brain tissue slide using 66527-1-Ig (MFF antibody) at dilution of 1:500 (under 10x lens. Heat mediated antigen retrieval with Tris-EDTA buffer (pH 9.0). This data was developed using the same antibody clone with 66527-1-PBS in a different storage buffer formulation.



Immunofluorescent analysis of (4% PFA) fixed mouse brain tissue using MFF antibody (66527-1-Ig, Clone: 1G4B12) at dilution of 1:400 and CoraLite®488-Conjugated AffiniPure Goat Anti-Mouse IgG(H+L). This data was developed using the same antibody clone with 66527-1-PBS in a different storage buffer formulation.



Immunohistochemical analysis of paraffin-embedded mouse brain tissue slide using 66527-1-Ig (MFF antibody) at dilution of 1:500 (under 40x lens. Heat mediated antigen retrieval with Tris-EDTA buffer (pH 9.0). This data was developed using the same antibody clone with 66527-1-PBS in a different storage buffer formulation.