

For Research Use Only

IDO1 Monoclonal antibody

Catalog Number: 66528-1-Ig **12 Publications**



Basic Information

Catalog Number: 66528-1-Ig	GenBank Accession Number: BC027882	Purification Method: Protein A purification
Size: 2000 µg/ml	GeneID (NCBI): 3620	CloneNo.: 3G2G11
Source: Mouse	UNIPROT ID: P14902	Recommended Dilutions: WB 1:5000-1:50000
Isotype: IgG1	Full Name: indoleamine 2,3-dioxygenase 1	
Immunogen Catalog Number: AG3953	Calculated MW: 403 aa, 45 kDa	
	Observed MW: 42 kDa	

Applications

Tested Applications: WB, ELISA	Positive Controls: WB : HeLa cells, HSC-T6 cells, 4T1 cells, IFN gamma treated HeLa cells
Cited Applications: IF, IHC, WB	
Species Specificity: Human, mouse, rat	
Cited Species: human, rat, mouse	

Background Information

IDO1 is the target for therapy in a range of clinical settings, including cancer, chronic infections, autoimmune and allergic syndromes, and transplantation. Elevated IDO1 expression is a hallmark of major viral infections including HIV, HBV, HCV or influenza and also of major bacteria infections, such as Tb, CAP, listeriosis and sepsis. Pathogens are able to hijack the immunosuppressive effects of IDO1 and make use of them to facilitate their own life cycle. MW of IDO1 is 40-42kd (PMID: 14502282; 17055065).

Notable Publications

Author	Pubmed ID	Journal	Application
Yuanhui Zhu	32926778	ACS Chem Neurosci	WB
Susu Lin	36169685	Psychopharmacology (Berl)	WB
Bo Zhang	31784933	Chin J Integr Med	WB

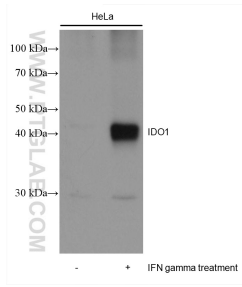
Storage

Storage:
Store at -20°C. Stable for one year after shipment.
Storage Buffer:
PBS with 0.02% sodium azide and 50% glycerol pH 7.3.
Aliquoting is unnecessary for -20°C storage

For technical support and original validation data for this product please contact:
T: 4006900926 E: Proteintech-CN@ptglab.com W: ptgcn.com

This product is exclusively available under Proteintech Group brand and is not available to purchase from any other manufacturer.

Selected Validation Data



Various lysates were subjected to SDS PAGE followed by western blot with 66528-1-Ig (IDO1 antibody) at dilution of 1:10000 incubated at room temperature for 1.5 hours.