

# MRPL45 Monoclonal antibody

Catalog Number: 66531-1-Ig

Featured Product

## Basic Information

Catalog Number:

66531-1-Ig

Size:

1600 µg/ml

Source:

Mouse

Isotype:

IgG1

Immunogen Catalog Number:

AG8207

GenBank Accession Number:

BC006235

GeneID (NCBI):

84311

UNIPROT ID:

Q9BRJ2

Full Name:

mitochondrial ribosomal protein L45

Calculated MW:

35 kDa

Observed MW:

33 kDa

Purification Method:

Protein G purification

CloneNo.:

1B4B4

Recommended Dilutions:

WB 1:2500-1:10000

IHC 1:250-1:1000

## Applications

Tested Applications:

IHC, WB, ELISA

Species Specificity:

Human, mouse, rat

**Note-IHC: suggested antigen retrieval with TE buffer pH 9.0; (\*) Alternatively, antigen retrieval may be performed with citrate buffer pH 6.0**

Positive Controls:

WB : HeLa cells, HSC-T6 cells, RAW 264.7 cells, HEK-293 cells, Jurkat cells, HepG2 cells

IHC : human breast cancer tissue,

## Background Information

Mammalian mitochondrial ribosomal proteins are encoded by nuclear genes and help in protein synthesis within the mitochondrion. Mitochondrial ribosomes (mitoribosomes) consist of a small 28S subunit and a large 39S subunit. MRPL45 is a 39S subunit protein.

## Storage

Storage:

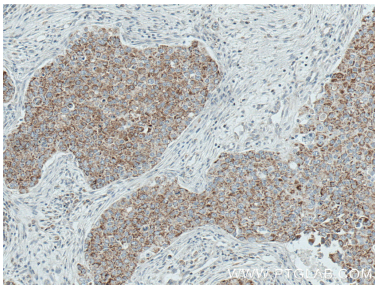
Store at -20°C. Stable for one year after shipment.

Storage Buffer:

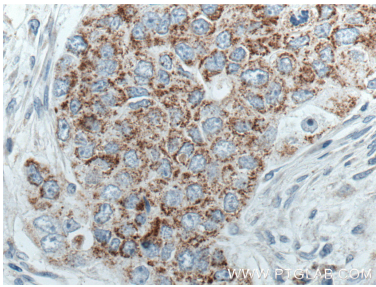
PBS with 0.02% sodium azide and 50% glycerol pH 7.3.

Aliquoting is unnecessary for -20°C storage

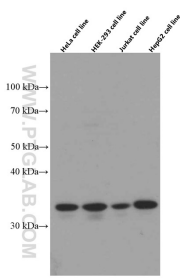
Selected Validation Data



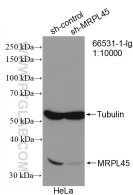
Immunohistochemical analysis of paraffin-embedded human breast cancer tissue slide using 66531-1-Ig (MRPL45 antibody) at dilution of 1:500 (under 10x lens. Heat mediated antigen retrieval with Tris-EDTA buffer (pH 9.0).



Immunohistochemical analysis of paraffin-embedded human breast cancer tissue slide using 66531-1-Ig (MRPL45 antibody) at dilution of 1:500 (under 40x lens. Heat mediated antigen retrieval with Tris-EDTA buffer (pH 9.0).



Various lysates were subjected to SDS PAGE followed by western blot with 66531-1-Ig (MRPL45 antibody) at dilution of 1:5000 incubated at room temperature for 1.5 hours.



WB result of MRPL45 antibody (66531-1-Ig; 1:10000; incubated at room temperature for 1.5 hours) with sh-Control and sh-MRPL45 transfected HeLa cells.