

# CIN85 Monoclonal antibody

Catalog Number: 66571-1-Ig

## Basic Information

**Catalog Number:**

66571-1-Ig

**Size:**

1500 µg/ml

**Source:**

Mouse

**Isotype:**

IgG1

**Immunogen Catalog Number:**

AG2777

**GenBank Accession Number:**

BC015806

**GeneID (NCBI):**

30011

**UNIPROT ID:**

Q96B97

**Full Name:**

SH3-domain kinase binding protein 1

**Calculated MW:**

665 aa, 73 kDa

**Observed MW:**

85 kDa

**Purification Method:**

Protein G purification

**CloneNo.:**

3C12D2

**Recommended Dilutions:**

WB 1:2000-1:10000

## Applications

**Tested Applications:**

WB, ELISA

**Species Specificity:**

Human, mouse, rat

**Positive Controls:**

WB : HL-60 cells, rat brain tissue, K-562 cells, PC-12 cells, mouse brain tissue, THP-1 cells, Jurkat cells, Ramos cells, Raji cells, Daudi cells

## Background Information

CIN85 is identified as a Cbl-interacting protein of 85 kDa and belongs to adaptor/scaffold proteins. It composed of three N-terminal SH3 domains followed by a proline-rich region and a C-terminal coiled-coil region. In association with c-Cbl (Casitas B-lineage lymphoma), an E3 ubiquitin ligase. As an adaptor protein, CIN85 is involved in Cbl-dependent EGFR internalization, intracellular receptor trafficking, sorting and degradation. Moreover, through the SH3 domains and the proline-rich region, CIN85 is implicated in many protein-protein interactions and it is found to play important roles in other processes such as apoptosis, rearrangement of actin cytoskeleton, cell adhesion, immunological synapse, cell migration and invasion.

## Storage

**Storage:**

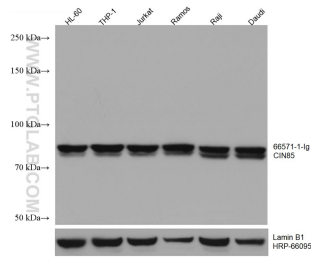
Store at -20°C. Stable for one year after shipment.

**Storage Buffer:**

PBS with 0.02% sodium azide and 50% glycerol pH 7.3.

Aliquoting is unnecessary for -20°C storage

## Selected Validation Data



Various lysates were subjected to SDS PAGE followed by western blot with 66571-1-Ig (CIN85 antibody) at dilution of 1:5000 incubated at room temperature for 1.5 hours. The membrane was stripped and reblotted with HRP-conjugated Lamin B1 Monoclonal antibody (HRP-66095) as loading control.