

For Research Use Only

SDHA Monoclonal antibody

Catalog Number: 66588-1-Ig **7 Publications**



Basic Information

Catalog Number: 66588-1-Ig	GenBank Accession Number: BC001380	Purification Method: Protein G purification
Concentration: 2100 ug/ml	GeneID (NCBI): 6389	CloneNo.: 5E10G12
Source: Mouse	UNIPROT ID: P31040	Recommended Dilutions: WB 1:5000-1:50000 IHC 1:1000-1:4000 IF/ICC 1:200-1:800
Isotype: IgG1	Full Name: succinate dehydrogenase complex, subunit A, flavoprotein (Fp)	
Immunogen Catalog Number: AG7023	Calculated MW: 73 kDa	
	Observed MW: 62-73 kDa	

Applications

Tested Applications: WB, IHC, IF/ICC, ELISA	Positive Controls: WB : NIH/3T3 cells, pig brain tissue, rat brain tissue, mouse brain tissue, rabbit brain tissue IHC : human liver cancer tissue, IF/ICC : HeLa cells,
Cited Applications: WB	
Species Specificity: human, mouse, rat, pig, rabbit	
Cited Species: human, mouse	
Note-IHC: suggested antigen retrieval with TE buffer pH 9.0; (*) Alternatively, antigen retrieval may be performed with citrate buffer pH 6.0	

Background Information

SDHA, also named as SDH2, SDHF and Fp, belongs to the FAD-dependent oxidoreductase 2 family and FRD/SDH subfamily. SDHA is the flavoprotein subunit of succinate dehydrogenase (SDH) that is involved in complex II of the mitochondrial electron transport chain and is responsible for transferring electrons from succinate to ubiquinone (coenzyme Q). SDHA has 3 isoforms with the molecular mass of 73, 67 and 57 kDa, and the N-terminal (~5 kDa) can be removed in mature form. It can be detected a band of 68 kDa in cutaneous melanoma(PMID:21698147). SDHA may act as a tumor suppressor.

Notable Publications

Author	Pubmed ID	Journal	Application
Jian Xiao	31144242	Sci China Life Sci	
Pengyu Wang	35905743	Cell Chem Biol	WB
Tao Zhang	39615486	Cell Rep Med	WB

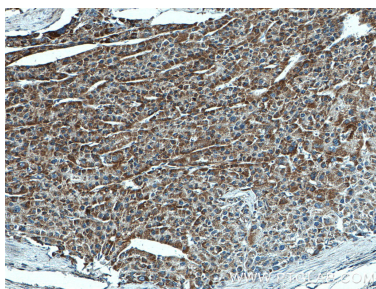
Storage

Storage:
Store at -20°C. Stable for one year after shipment.
Storage Buffer:
PBS with 0.02% sodium azide and 50% glycerol, pH7.3
Aliquoting is unnecessary for -20°C storage

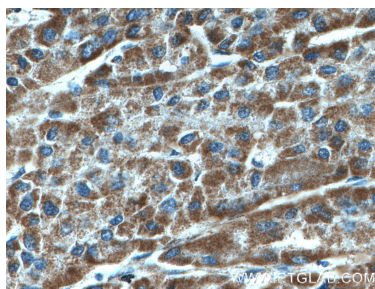
For technical support and original validation data for this product please contact:
T: 4006900926 E: Proteintech-CN@ptglab.com W: ptgcn.com

This product is exclusively available under Proteintech Group brand and is not available to purchase from any other manufacturer.

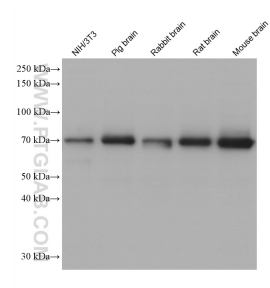
Selected Validation Data



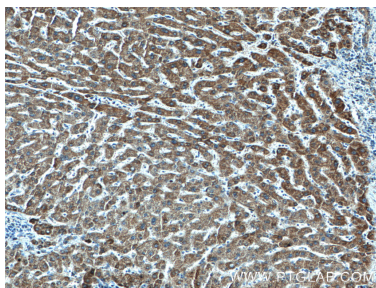
Immunohistochemical analysis of paraffin-embedded human liver cancer tissue slide using 66588-1-Ig (SDHA antibody) at dilution of 1:2000 (under 10x lens).



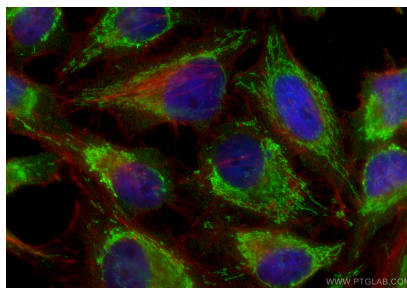
Immunohistochemical analysis of paraffin-embedded human liver cancer tissue slide using 66588-1-Ig (SDHA antibody) at dilution of 1:2000 (under 40x lens).



Various lysates were subjected to SDS PAGE followed by western blot with 66588-1-Ig (SDHA antibody) at dilution of 1:20000 incubated at room temperature for 1.5 hours.



Immunohistochemical analysis of paraffin-embedded human liver cancer tissue slide using 66588-1-Ig (SDHA antibody) at dilution of 1:2000 (under 10x lens).



Immunofluorescent analysis of (4% PFA) fixed HeLa cells using SDHA antibody (66588-1-Ig, Clone: 5E10G12) at dilution of 1:400 and CoraLite@488-Conjugated Goat Anti-Mouse IgG(H+L) (SA00013-1), CLS94-Phalloidin (red).