

For Research Use Only

SDHA Monoclonal antibody, PBS Only



Catalog Number: 66588-1-PBS

Basic Information

Catalog Number:

66588-1-PBS

Size:

1 mg/ml

Source:

Mouse

Isotype:

IgG1

Immunogen Catalog Number:

AG7023

GenBank Accession Number:

BC001380

GeneID (NCBI):

6389

UNIPROT ID:

P31040

Full Name:

succinate dehydrogenase complex, subunit A, flavoprotein (Fp)

Calculated MW:

73 kDa

Observed MW:

62-73 kDa

Purification Method:

Protein A purification

CloneNo.:

5E10G12

Applications

Tested Applications:

WB,IHC,IF,ELISA

Species Specificity:

Human, Mouse, Rat

Background Information

SDHA, also named as SDH2, SDHF and Fp, belongs to the FAD-dependent oxidoreductase 2 family and FRD/SDH subfamily. SDHA is the flavoprotein subunit of succinate dehydrogenase (SDH) that is involved in complex II of the mitochondrial electron transport chain and is responsible for transferring electrons from succinate to ubiquinone (coenzyme Q). SDHA has 3 isoforms with the molecular mass of 73, 67 and 57 kDa, and the N-terminal (~5 kDa) can be removed in mature form. It can be detected a band of 68 kDa in cutaneous melanoma (PMID:21698147). SDHA may act as a tumor suppressor.

Storage

Storage:

Store at -20°C. Stable for one year after shipment.

Storage Buffer:

PBS only

Aliquoting is unnecessary for -20°C storage

For technical support and original validation data for this product please contact:

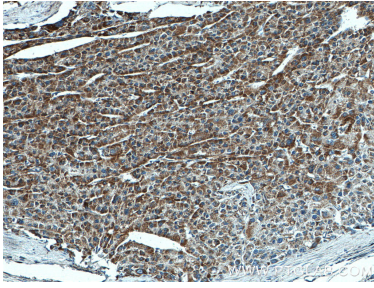
T: 4006900926

E: Proteintech-CN@ptglab.com

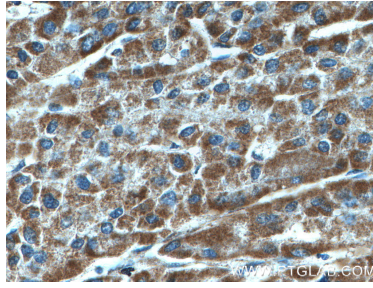
W: ptgcn.com

This product is exclusively available under Proteintech Group brand and is not available to purchase from any other manufacturer.

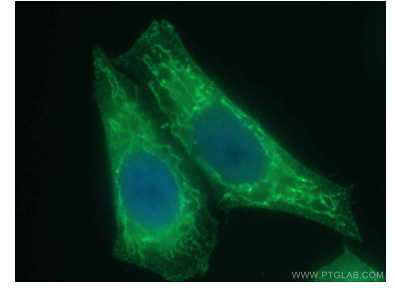
Selected Validation Data



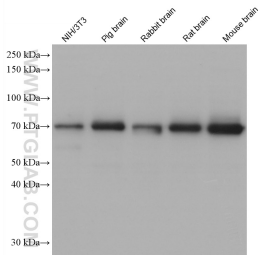
Immunohistochemical analysis of paraffin-embedded human liver cancer tissue slide using 66588-1-Ig (SDHA antibody) at dilution of 1:2000 (under 10x lens). This data was developed using the same antibody clone with 66588-1-PBS in a different storage buffer formulation.



Immunohistochemical analysis of paraffin-embedded human liver cancer tissue slide using 66588-1-Ig (SDHA antibody) at dilution of 1:2000 (under 40x lens). This data was developed using the same antibody clone with 66588-1-PBS in a different storage buffer formulation.



Immunofluorescent analysis of (4% PFA) fixed HepG2 cells using 66588-1-Ig (SDHA antibody) at dilution of 1:100 and Alexa Fluor 488-Conjugated AffiniPure Goat Anti-Mouse IgG(H+L). This data was developed using the same antibody clone with 66588-1-PBS in a different storage buffer formulation.



Various lysates were subjected to SDS PAGE followed by western blot with 66588-1-Ig (SDHA antibody) at dilution of 1:20000 incubated at room temperature for 1.5 hours. This data was developed using the same antibody clone with 66588-1-PBS in a different storage buffer formulation.