

Cytokeratin 6A Monoclonal antibody

Catalog Number: 66685-1-Ig

2 Publications

Basic Information

Catalog Number:

66685-1-Ig

Size:

1100 µg/ml

Source:

Mouse

Isotype:

IgG1

Immunogen Catalog Number:

AG0882

GenBank Accession Number:

BC008807

GeneID (NCBI):

3853

UNIPROT ID:

P02538

Full Name:

keratin 6A

Calculated MW:

60 kDa

Observed MW:

60 kDa

Purification Method:

Protein G purification

CloneNo.:

2H6A11

Recommended Dilutions:

WB 1:20000-1:100000

IHC 1:1000-1:2000

Applications

Tested Applications:

IHC, WB, ELISA

Cited Applications:

IF, IHC

Species Specificity:

Human

Cited Species:

human, mouse

Note-IHC: suggested antigen retrieval with TE buffer pH 9.0; (*) Alternatively, antigen retrieval may be performed with citrate buffer pH 6.0

Positive Controls:

WB: A431 cells,

IHC: human cervical cancer tissue,

Background Information

Keratins are a large family of proteins that form the intermediate filament cytoskeleton of epithelial cells, which are classified into two major sequence types. Type I keratins are a group of acidic intermediate filament proteins, including K9-K23, and the hair keratins Ha1-Ha8. Type II keratins are the basic or neutral counterparts to the acidic type I keratins, including K1-K8, and the hair keratins, Hb1-Hb6. Keratin 6 is a type II keratin. It is used as marker for epidermal hyperproliferation and differentiation. There are three keratin 6 isoforms: keratin 6A, 6B and 6C. They share more than 99% identical DNA sequence.

Notable Publications

Author	Pubmed ID	Journal	Application
Junfeng Zhang	33221741	Aging (Albany NY)	IF, IHC
Zhenkun Zhang	33159581	Cell Tissue Res	IF

Storage

Storage:

Store at -20°C. Stable for one year after shipment.

Storage Buffer:

PBS with 0.02% sodium azide and 50% glycerol pH 7.3.

Aliquoting is unnecessary for -20°C storage

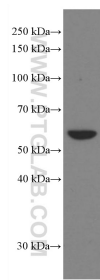
For technical support and original validation data for this product please contact:

T: 4006900926

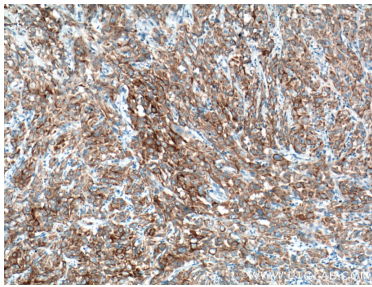
E: Proteintech-CN@ptglab.comW: ptgcn.com

This product is exclusively available under Proteintech Group brand and is not available to purchase from any other manufacturer.

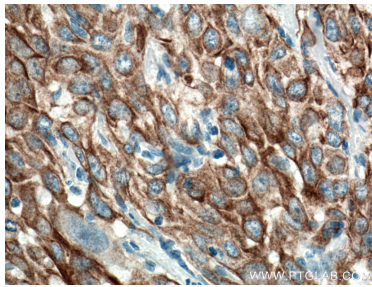
Selected Validation Data



A431 cells were subjected to SDS PAGE followed by western blot with 66685-1-Ig (KRT6A antibody) at dilution of 1:100000 incubated at room temperature for 1.5 hours.



Immunohistochemical analysis of paraffin-embedded human cervical cancer tissue slide using 66685-1-Ig (KRT6A antibody) at dilution of 1:2000 (under 10x lens. Heat mediated antigen retrieval with Tris-EDTA buffer (pH 9.0).



Immunohistochemical analysis of paraffin-embedded human cervical cancer tissue slide using 66685-1-Ig (KRT6A antibody) at dilution of 1:2000 (under 40x lens. Heat mediated antigen retrieval with Tris-EDTA buffer (pH 9.0).