

For Research Use Only

RBX1 Monoclonal antibody

Catalog Number: 66716-1-Ig **1 Publications**



Basic Information

Catalog Number: 66716-1-Ig	GenBank Accession Number: BC001466	Purification Method: Protein G purification
Size: 1300 µg/ml	GeneID (NCBI): 9978	CloneNo.: 1F4D9
Source: Mouse	UNIPROT ID: P62877	Recommended Dilutions: WB 1:20000-1:50000 IHC 1:2500-1:10000
Isotype: IgG1	Full Name: ring-box 1	
Immunogen Catalog Number: AG7005	Calculated MW: 12 kDa	
	Observed MW: 12-15 kDa	

Applications

Tested Applications: IHC, WB, ELISA	Positive Controls: WB : HeLa cells, RAW 264.7 cells, HEK-293 cells, HepG2 cells, Jurkat cells IHC : human liver cancer tissue,
Cited Applications: IP, WB	
Species Specificity: Human, Mouse, Rat	
Cited Species: human	
Note-IHC: suggested antigen retrieval with TE buffer pH 9.0; (*) Alternatively, antigen retrieval may be performed with citrate buffer pH 6.0	

Background Information

RBX1(RING-box protein 1) is also named as RNF75, ROC1 and is a requisite component of the multi-subunit SCF family E3s36-40. It mediates the ubiquitination and subsequent proteasomal degradation of target proteins, including proteins involved in cell cycle progression, signal transduction, transcription and transcription-coupled nucleotide excision repair.

Notable Publications

Author	Pubmed ID	Journal	Application
Magda Wąchalska	37808699	bioRxiv	WB, IP

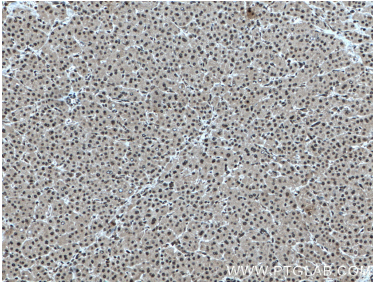
Storage

Storage:
Store at -20°C. Stable for one year after shipment.
Storage Buffer:
PBS with 0.02% sodium azide and 50% glycerol pH 7.3.
Aliquoting is unnecessary for -20°C storage

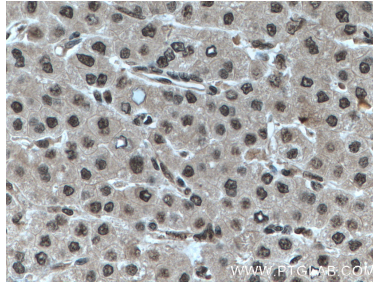
For technical support and original validation data for this product please contact:
T: 4006900926 E: Proteintech-CN@ptglab.com W: ptgcn.com

This product is exclusively available under Proteintech Group brand and is not available to purchase from any other manufacturer.

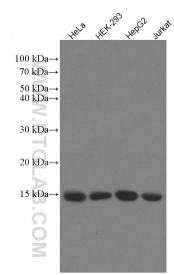
Selected Validation Data



Immunohistochemical analysis of paraffin-embedded human liver cancer tissue slide using 66716-1-Ig (RBX1 antibody) at dilution of 1:5000 (under 10x lens) Heat mediated antigen retrieved with Sodium Citrate buffer (pH 6.0).



Immunohistochemical analysis of paraffin-embedded human liver cancer tissue slide using 66716-1-Ig (RBX1 antibody) at dilution of 1:5000 (under 40x lens) Heat mediated antigen retrieved with Sodium Citrate buffer (pH 6.0).



Various lysates were subjected to SDS PAGE followed by western blot with 66716-1-Ig (RBX1 antibody) at dilution of 1:50000 incubated at room temperature for 1.5 hours.