

For Research Use Only

HSPH1 Monoclonal antibody

Catalog Number: 66723-1-Ig



Basic Information

Catalog Number: 66723-1-Ig	GenBank Accession Number: BC037553	Purification Method: Protein G purification
Size: 1300 µg/ml	GeneID (NCBI): 10808	CloneNo.: 3H5A5
Source: Mouse	UNIPROT ID: Q92598	Recommended Dilutions: WB 1:5000-1:20000 IHC 1:500-1:2000 IF 1:50-1:500
Isotype: IgG1	Full Name: heat shock 105kDa/110kDa protein 1	
Immunogen Catalog Number: AG27521	Calculated MW: 858 aa, 97 kDa	
	Observed MW: 110 kDa	

Applications

Tested Applications:
IF/ICC, IHC, WB, ELISA

Species Specificity:
Human, mouse

Note-IHC: suggested antigen retrieval with TE buffer pH 9.0; (*) Alternatively, antigen retrieval may be performed with citrate buffer pH 6.0

Positive Controls:

WB : HeLa cells, HEK-293 cells, MCF-7 cells, Jurkat cells
IHC : mouse testis tissue,
IF : HeLa cells,

Background Information

HSP105, also known as HSP110 or HSPH1, belongs to the heat shock protein (HSP) family. Human HSP105 is a high-molecular-weight chaperone protein expressed at constitutively low levels as a cytoplasmic α -isoform and as an inducible nuclear β -isoform on exposure to various forms of stress. HSP105 is constitutively overexpressed in several solid tumors, including melanoma, breast, thyroid, and gastroenteric cancers, and exerts antiapoptotic functions. Recently HSP105 has been identified as a novel candidate biomarker of lymphoma aggressiveness. Western blot analysis using this antibody detected the phosphorylated protein around 110 kDa in various lysates.

Storage

Storage:
Store at -20°C. Stable for one year after shipment.
Storage Buffer:
PBS with 0.02% sodium azide and 50% glycerol pH 7.3.
Aliquoting is unnecessary for -20°C storage

For technical support and original validation data for this product please contact:

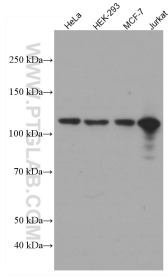
T: 4006900926

E: Proteintech-CN@ptglab.com

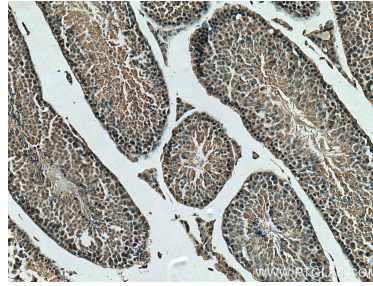
W: ptgcn.com

This product is exclusively available under Proteintech Group brand and is not available to purchase from any other manufacturer.

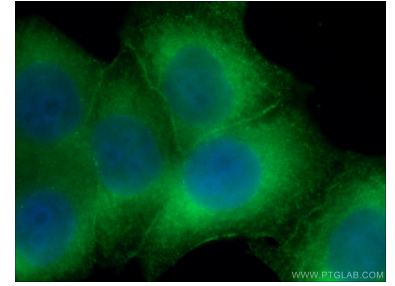
Selected Validation Data



Various lysates were subjected to SDS PAGE followed by western blot with 66723-1-Ig (HSPH1 antibody) at dilution of 1:10000 incubated at room temperature for 1.5 hours.



Immunohistochemical analysis of paraffin-embedded mouse testis tissue slide using 66723-1-Ig (HSPH1 antibody) at dilution of 1:1000 (under 10x lens). Heat mediated antigen retrieval with Tris-EDTA buffer (pH 9.0).



Immunofluorescent analysis of (-20°C Ethanol) fixed HeLa cells using 66723-1-Ig (HSPH1 antibody) at dilution of 1:100 and Alexa Fluor 488-Conjugated AffiniPure Goat Anti-Mouse IgG(H+L).