

For Research Use Only

DR6 Monoclonal antibody

Catalog Number: 66754-1-Ig



Basic Information

Catalog Number:

66754-1-Ig

Size:

1500 µg/ml

Source:

Mouse

Isotype:

IgG1

Immunogen Catalog Number:

AG14327

GenBank Accession Number:

BC021572

GeneID (NCBI):

27242

UNIPROT ID:

O75509

Full Name:

tumor necrosis factor receptor
superfamily, member 21

Calculated MW:

655 aa, 72 kDa

Observed MW:

69 kDa

Purification Method:

Protein G purification

CloneNo.:

3C2D10

Recommended Dilutions:

WB 1:1000-1:6000

IF 1:400-1:1600

Applications

Tested Applications:

IF/ICC, WB, ELISA

Species Specificity:

Human

Positive Controls:

WB : K-562 cells, THP-1 cells, Jurkat cells, Raji cells,
Daudi cells

IF : HepG2 cells,

Background Information

DR6 (also known as TNFRSF21 or CD358) is an orphan receptor of the tumor necrosis factor (TNF) receptor superfamily. It controls cell death and differentiation in a cell-autonomous manner in different cell types including neurons, oligodendrocytes, endothelial cells, and immune cells (PMID: 29459438). DR6 has been shown to activate NF-κB and JNK, and induce cell apoptosis (PMID: 9714541). DR6 interacts with TRADD, which is known to mediate signal transduction of TNF receptors. It has been reported that APP binds DR6 to trigger axon pruning and neuron death via distinct caspases, indicating that DR6 might be involved in Alzheimer's disease (PMID: 19225519).

Storage

Storage:

Store at -20°C. Stable for one year after shipment.

Storage Buffer:

PBS with 0.02% sodium azide and 50% glycerol pH 7.3.

Aliquoting is unnecessary for -20°C storage

For technical support and original validation data for this product please contact:

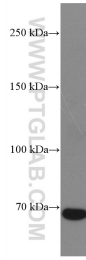
T: 4006900926

E: Proteintech-CN@ptglab.com

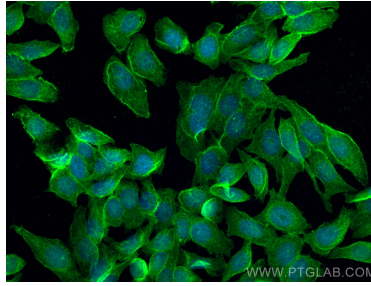
W: ptgcn.com

This product is exclusively available under Proteintech Group brand and is not available to purchase from any other manufacturer.

Selected Validation Data



K-562 cells were subjected to SDS PAGE followed by western blot with 66754-1-Ig (DR6 antibody) at dilution of 1:3000 incubated at room temperature for 1.5 hours.



Immunofluorescent analysis of (4% PFA) fixed HepG2 cells using DR6 antibody (66754-1-Ig, Clone: 3C2D10) at dilution of 1:800 and CoraLite®488-Conjugated AffiniPure Goat Anti-Mouse IgG(H+L).