

## Catalase Monoclonal antibody

Catalog Number: 66765-1-Ig

Featured Product

18 Publications

## Basic Information

## Catalog Number:

66765-1-Ig

## Size:

1500 µg/ml

## Source:

Mouse

## Isotype:

IgG1

## Immunogen Catalog Number:

AG16916

## GenBank Accession Number:

BC112219

## GeneID (NCBI):

847

## UNIPROT ID:

P04040

## Full Name:

catalase

## Calculated MW:

60 kDa

## Observed MW:

60 kDa

## Purification Method:

Protein G purification

## CloneNo.:

1F8D7

## Recommended Dilutions:

WB 1:5000-1:50000

IHC 1:100-1:500

IF 1:50-1:500

## Applications

## Tested Applications:

IF/ICC, IHC, WB, ELISA

## Cited Applications:

IF, WB

## Species Specificity:

Human, Mouse, Rat, Pig

## Cited Species:

human, goat, rat, mouse, pig

**Note-IHC: suggested antigen retrieval with TE buffer pH 9.0; (\*) Alternatively, antigen retrieval may be performed with citrate buffer pH 6.0**

## Positive Controls:

**WB** : HeLa cells, rat brain tissue, mouse brain tissue, HEK-293 cells, HepG2 cells, Jurkat cells, HSC-T6 cells, NIH/3T3 cells, pig brain tissue

**IHC** : human hepatocirrhosis tissue,

**IF** : HepG2 cells,

## Background Information

Catalase belongs to the catalase family. CAT occurs in almost all aerobically respiring organisms and serves to protect cells from the toxic effects of hydrogen peroxide. CAT promotes the growth of cells including T-cells, B-cells, myeloid leukemia cells, melanoma cells, mastocytoma cells, and normal and transformed fibroblast cells. CAT catalyzes the reaction:  $2\text{H}_2\text{O}_2 = \text{O}_2 + 2\text{H}_2\text{O}$ . Defects in CAT are the cause of acatalasia (ACATLAS) which is also known as acatalasemia.

## Notable Publications

Author	Pubmed ID	Journal	Application
Qin Li	36410421	Am J Pathol	WB
Jian Xiao	31144242	Sci China Life Sci	
Jing Li	33774368	Theriogenology	WB

## Storage

## Storage:

Store at -20°C. Stable for one year after shipment.

## Storage Buffer:

PBS with 0.02% sodium azide and 50% glycerol pH 7.3.

Aliquoting is unnecessary for -20°C storage

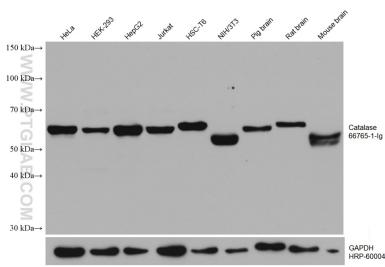
For technical support and original validation data for this product please contact:

T: 4006900926

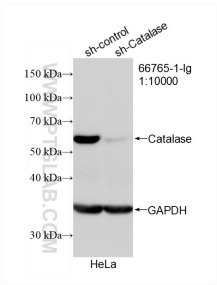
E: [Proteintech-CN@ptglab.com](mailto:Proteintech-CN@ptglab.com)W: [ptgcn.com](http://ptgcn.com)

This product is exclusively available under Proteintech Group brand and is not available to purchase from any other manufacturer.

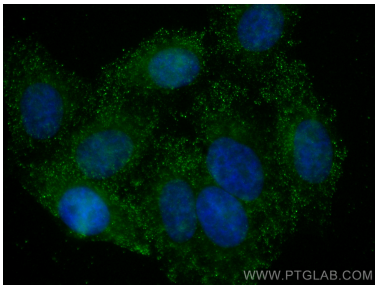
Selected Validation Data



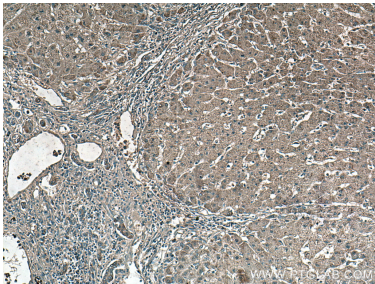
Various lysates were subjected to SDS PAGE followed by western blot with 66765-1-Ig (Catalase antibody) at dilution of 1:10000 incubated at room temperature for 1.5 hours. The membrane was stripped and reblotted with HRP-conjugated GAPDH Monoclonal antibody (HRP-60004) as loading control.



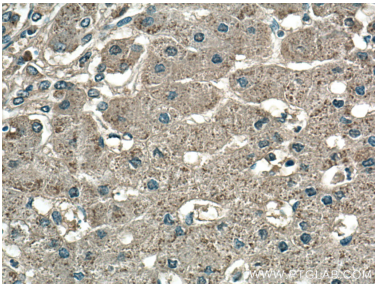
WB result of Catalase antibody (66765-1-Ig; 1:10000; incubated at room temperature for 1.5 hours) with sh-Control and sh-Catalase transfected HeLa cells.



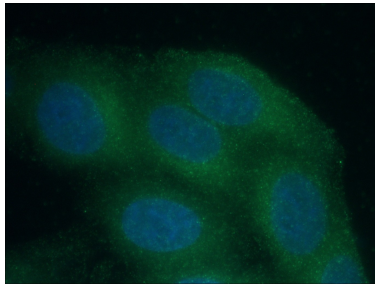
Immunofluorescent analysis of (4% PFA) fixed HepG2 cells using Catalase antibody (66765-1-Ig, Clone: 1F8D7 ) at dilution of 1:400 and CoraLite®488-Conjugated AffiniPure Goat Anti-Mouse IgG(H+L).



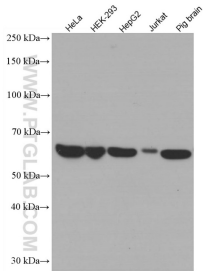
Immunohistochemical analysis of paraffin-embedded human hepatocirrhosis tissue slide using 66765-1-Ig (Catalase antibody) at dilution of 1:500 (under 10x lens).



Immunohistochemical analysis of paraffin-embedded human hepatocirrhosis tissue slide using 66765-1-Ig (Catalase antibody) at dilution of 1:500 (under 40x lens).



Immunofluorescent analysis of (-20°C Ethanol) fixed HepG2 cells using 66765-1-Ig (Catalase antibody) at dilution of 1:50 and Alexa Fluor 488-Conjugated AffiniPure Goat Anti-Mouse IgG(H+L).



Various lysates were subjected to SDS PAGE followed by western blot with 66765-1-Ig (Catalase antibody) at dilution of 1:5000 incubated at room temperature for 1.5 hours.