

For Research Use Only

PABPC1,PABP Monoclonal antibody



Catalog Number: 66809-1-Ig

Featured Product

3 Publications

Basic Information

Catalog Number:

66809-1-Ig

Size:

2400 µg/ml

Source:

Mouse

Isotype:

IgG1

Immunogen Catalog Number:

AG27860

GenBank Accession Number:

BC015958

GeneID (NCBI):

26986

UNIPROT ID:

P11940

Full Name:

poly(A) binding protein, cytoplasmic 1

Calculated MW:

71 kDa

Observed MW:

71 kDa

Purification Method:

Protein G purification

CloneNo.:

3D8B5

Recommended Dilutions:

WB 1:2000-1:10000

IHC 1:50-1:500

IF 1:50-1:500

Applications

Tested Applications:

IF/ICC, IHC, WB, ELISA

Cited Applications:

WB, IP, IF, IHC

Species Specificity:

Human, rat, mouse

Cited Species:

human

Note-IHC: suggested antigen retrieval with TE buffer pH 9.0; (*) Alternatively, antigen retrieval may be performed with citrate buffer pH 6.0

Positive Controls:

WB : HeLa cells, LNCaP cells, MCF-7 cells, T-47D cells, NCCIT cells

IHC : mouse testis tissue, mouse cerebellum tissue

IF : HEK-293 cells,

Background Information

The poly(A)-binding protein (PABP), which is found complexed to the 3-prime poly(A) tail of eukaryotic mRNA, is required for poly(A) shortening and translation initiation [PMID: 21989405]. Polyadenylate-binding protein 1 (PABPC1) is a cytoplasmic-nuclear shuttling protein important for protein translation initiation, and both RNA processing and stability. In the cytoplasm, PABPC1 binds to the 3' poly(A) tail of eukaryotic mRNAs through its RNA-recognition motifs (RRM) and interacts with the N-terminus of eIF4G, part of the eIF4F complex associated with the 5' cap structure [PMID:20009508, 17381337].

Notable Publications

Author	Pubmed ID	Journal	Application
Abdoulaye Issotina Zibrila	34232157	J Hypertens	IHC
Tailai An	34420428	Future Oncol	IHC
Tian-Jiao Li	37757903	Cancer Lett	WB,IF,IP

Storage

Storage:

Store at -20°C. Stable for one year after shipment.

Storage Buffer:

PBS with 0.02% sodium azide and 50% glycerol pH 7.3.

Aliquoting is unnecessary for -20°C storage

For technical support and original validation data for this product please contact:

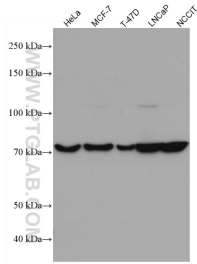
T: 4006900926

E: Proteintech-CN@ptglab.com

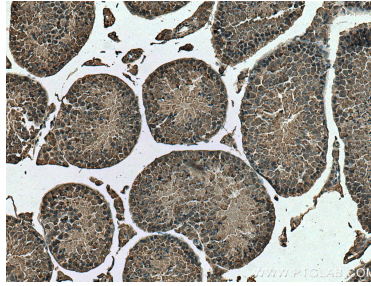
W: ptgcn.com

This product is exclusively available under Proteintech Group brand and is not available to purchase from any other manufacturer.

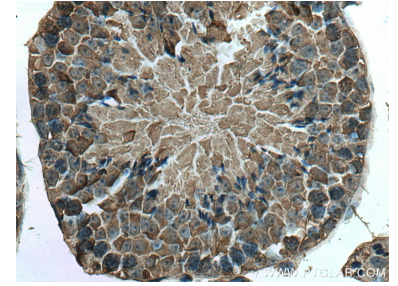
Selected Validation Data



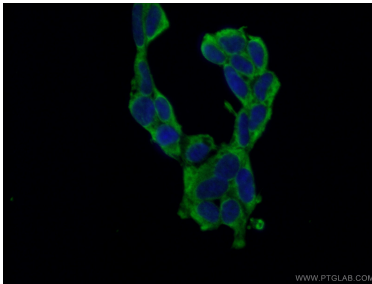
Various lysates were subjected to SDS PAGE followed by western blot with 66809-1-Ig (PABPC1,PABP antibody) at dilution of 1:5000 incubated at room temperature for 1.5 hours.



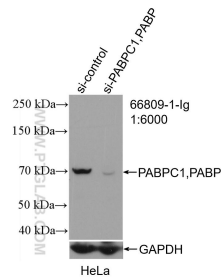
Immunohistochemical analysis of paraffin-embedded mouse testis tissue slide using 66809-1-Ig (PABPC1,PABP antibody) at dilution of 1:200 (under 10x lens). Heat mediated antigen retrieval with Tris-EDTA buffer (pH 9.0).



Immunohistochemical analysis of paraffin-embedded mouse testis tissue slide using 66809-1-Ig (PABPC1,PABP antibody) at dilution of 1:200 (under 40x lens). Heat mediated antigen retrieval with Tris-EDTA buffer (pH 9.0).



Immunofluorescent analysis of (-20°C Ethanol) fixed HEK-293 cells using 66809-1-Ig (PABPC1,PABP antibody) at dilution of 1:100 and Alexa Fluor 488-Conjugated AffiniPure Goat Anti-Mouse IgG(H+L).



WB result of PABPC1,PABP antibody (66809-1-Ig; 1:6000; incubated at room temperature for 1.5 hours) with sh-Control and sh-PABPC1,PABP transfected HeLa cells.