

For Research Use Only

# SPON2 Monoclonal antibody

Catalog Number: 66859-1-Ig 1 Publications



## Basic Information

<b>Catalog Number:</b> 66859-1-Ig	<b>GenBank Accession Number:</b> BC002707	<b>Purification Method:</b> Protein A purification
<b>Size:</b> 1500 µg/ml	<b>GeneID (NCBI):</b> 10417	<b>CloneNo.:</b> 1H4B11
<b>Source:</b> Mouse	<b>UNIPROT ID:</b> Q9BUD6	<b>Recommended Dilutions:</b> WB 1:1000-1:4000 IHC 1:500-1:2000
<b>Isotype:</b> IgG2a	<b>Full Name:</b> spondin 2, extracellular matrix protein	
<b>Immunogen Catalog Number:</b> AG14337	<b>Calculated MW:</b> 331 aa, 36 kDa	
	<b>Observed MW:</b> 38 kDa	

## Applications

<b>Tested Applications:</b> IHC, WB, ELISA	<b>Positive Controls:</b> WB : LNCaP cells, IHC : human prostate cancer tissue,
<b>Cited Applications:</b> WB, IHC	
<b>Species Specificity:</b> Human	
<b>Cited Species:</b> human	
<b>Note-IHC: suggested antigen retrieval with TE buffer pH 9.0; (*) Alternatively, antigen retrieval may be performed with citrate buffer pH 6.0</b>	

## Background Information

SPON2 (Spondin 2), also known as Mindin, is a member of the F-spondin family of secreted extracellular matrix proteins. This protein has been implicated in axon guidance, immune response and adhesion. SPON2 is essential in the initiation of the innate immune response and represents a unique pattern-recognition molecule in the ECM for microbial pathogens (PMID: 14691481). It also functions as an integrin ligand for inflammatory cell recruitment and T-cell priming (PMID: 19153605). Besides, SPON2 has been reported as a prognostic biomarker for ovarian and prostate cancer (PMID: 17490732; 22615945; 23665271).

## Notable Publications

Author	Pubmed ID	Journal	Application
Ming Wu	36427776	Bone	WB, IHC

## Storage

**Storage:**  
Store at -20°C. Stable for one year after shipment.  
**Storage Buffer:**  
PBS with 0.02% sodium azide and 50% glycerol pH 7.3.  
Aliquoting is unnecessary for -20°C storage

For technical support and original validation data for this product please contact:

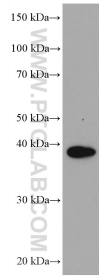
T: 4006900926

E: [Proteintech-CN@ptglab.com](mailto:Proteintech-CN@ptglab.com)

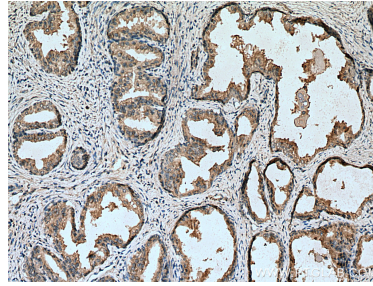
W: [ptgcn.com](http://ptgcn.com)

**This product is exclusively available under Proteintech Group brand and is not available to purchase from any other manufacturer.**

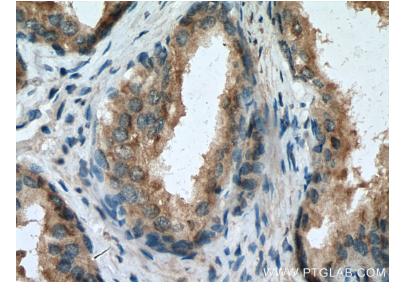
## Selected Validation Data



LNCaP cells were subjected to SDS PAGE followed by western blot with 66859-1-Ig (SPON2 antibody) at dilution of 1:2000 incubated at room temperature for 1.5 hours.



Immunohistochemical analysis of paraffin-embedded human prostate cancer tissue slide using 66859-1-Ig (SPON2 antibody) at dilution of 1:1000 (under 10x lens). Heat mediated antigen retrieval with Tris-EDTA buffer (pH 9.0).



Immunohistochemical analysis of paraffin-embedded human prostate cancer tissue slide using 66859-1-Ig (SPON2 antibody) at dilution of 1:1000 (under 40x lens). Heat mediated antigen retrieval with Tris-EDTA buffer (pH 9.0).