

For Research Use Only

RACK1; GNB2L1 Monoclonal antibody



Catalog Number: 66940-1-Ig **3 Publications**

Basic Information

Catalog Number: 66940-1-Ig	GenBank Accession Number: BC019093	Purification Method: Protein A purification
Size: 1600 µg/ml	GeneID (NCBI): 10399	CloneNo.: 1E11A7
Source: Mouse	UNIPROT ID: P63244	Recommended Dilutions: WB 1:5000-1:50000 IHC 1:250-1:1000
Isotype: IgG2a	Full Name: guanine nucleotide binding protein (GIF protein), beta polypeptide 2-like 1	IHC 1:200-1:800
Immunogen Catalog Number: AG26708	Calculated MW: 36 kDa	
	Observed MW: 32 kDa	

Applications

Tested Applications: IF/ICC, IHC, WB, ELISA	Positive Controls:
Cited Applications: WB, IP, IF, IHC, CoIP	WB: HeLa cells, pig liver tissue, NIH/3T3 cells, HSC-T6 cells, HepG2 cells, T-47D cells, L02 cells
Species Specificity: Human, Mouse, Rat, Pig	IHC: human lung cancer tissue,
Cited Species: human, rat, mouse	IF: HeLa cells,

Note-IHC: suggested antigen retrieval with TE buffer pH 9.0; (*) Alternatively, antigen retrieval may be performed with citrate buffer pH 6.0

Background Information

Members of the protein kinase C (PKC) family play a key regulatory role in a variety of cellular functions, including cell growth and differentiation, gene expression, hormone secretion and membrane function. RACK1 (receptor for activated protein kinase C 1), encoded by GNB2L1 gene, is a 317 amino acid guanine nucleotide-binding protein subunit beta-2-like 1 protein which is involved in the recruitment, assembly and/or regulation of a variety of signaling molecules, it contains 7 WD-repeats and is implicated in various protein interaction activities. RACK1 is a component of the 40S ribosomal subunit involved in translational repression. Recent finding suggests that RACK1 may be a new promising diagnosis biomarker and therapeutic target for non-small-cell lung cancer (NSCLC).

Notable Publications

Author	Pubmed ID	Journal	Application
Ling Hou	37823194	Am J Physiol Renal Physiol	IP, WB
Yanan Pi	37828084	Cell Death Differ	WB, IHC, IF, IP, CoIP
Guohao Zhang	37707957	J Clin Invest	IF

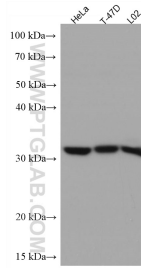
Storage

Storage:
Store at -20°C. Stable for one year after shipment.
Storage Buffer:
PBS with 0.02% sodium azide and 50% glycerol pH 7.3.
Aliquoting is unnecessary for -20°C storage

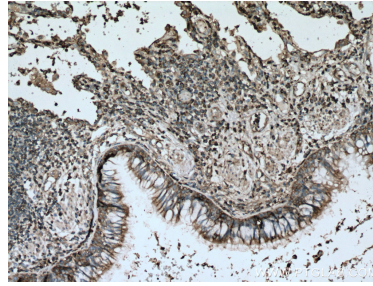
For technical support and original validation data for this product please contact:
T: 4006900926 E: Proteintech-CN@ptglab.com W: ptgcn.com

This product is exclusively available under Proteintech Group brand and is not available to purchase from any other manufacturer.

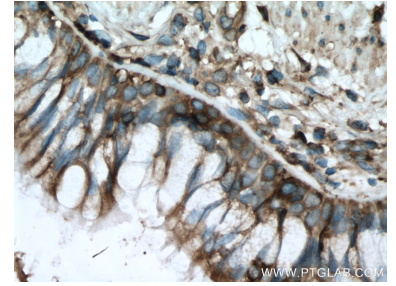
Selected Validation Data



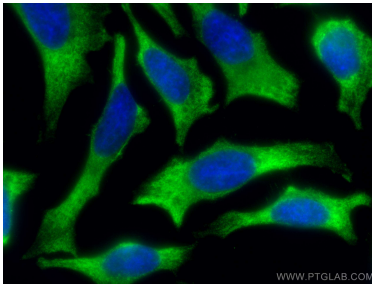
Various lysates were subjected to SDS PAGE followed by western blot with 66940-1-Ig (RACK1; GNB2L1 antibody) at dilution of 1:20000 incubated at room temperature for 1.5 hours.



Immunohistochemical analysis of paraffin-embedded human lung cancer tissue slide using 66940-1-Ig (RACK1; GNB2L1 antibody) at dilution of 1:500 (under 10x lens). Heat mediated antigen retrieval with Tris-EDTA buffer (pH 9.0).



Immunohistochemical analysis of paraffin-embedded human lung cancer tissue slide using 66940-1-Ig (RACK1; GNB2L1 antibody) at dilution of 1:500 (under 40x lens). Heat mediated antigen retrieval with Tris-EDTA buffer (pH 9.0).



Immunofluorescent analysis of (-20°C Methanol) fixed HeLa cells using RACK1; GNB2L1 antibody (66940-1-Ig, Clone: 1E11A7) at dilution of 1:400 and CoraLite®488-Conjugated AffiniPure Goat Anti-Mouse IgG(H+L).