

For Research Use Only

ICOSLG Monoclonal antibody

Catalog Number: 67003-1-Ig



Basic Information

Catalog Number: 67003-1-Ig	GenBank Accession Number: BC064637	Purification Method: Protein A purification
Size: 1900 µg/ml	GeneID (NCBI): 23308	CloneNo.: 2G1F8
Source: Mouse	UNIPROT ID: O75144	Recommended Dilutions: WB 1:5000-1:50000
Isotype: IgG2a	Full Name: inducible T-cell co-stimulator ligand	
Immunogen Catalog Number: AG6799	Calculated MW: 33 kDa, 34 kDa	
	Observed MW: 60-65 kDa, 28-35 kDa	

Applications

Tested Applications: WB, ELISA	Positive Controls: WB : HL-60 cells, Daudi cells, HUVEC cells, JAR cells
Species Specificity: Human	

Background Information

ICOSLG, also known as B7H2 or GL50, is a type I transmembrane glycoprotein belonging to the B7 ligand family. ICOSLG is extensively expressed on professional antigen-presenting cells including B cells, macrophages, and dendritic cells, as well as non-lymphoid cells including mesenchymal stem cells, endothelial cells, fibroblasts, and tumor cells (PMID: 33756276; 35800767). It is a specific ligand for the T-cell-specific cell surface receptor ICOS and acts as a co-stimulatory molecule (PMID: 11023515; 11007762). The interaction of ICOSLG and ICOS plays important roles in the activation, proliferation, differentiation, and cytokine production of T cells as well as in the antibody secretion from B cells during secondary immune responses (PMID: 21851236).

Storage

Storage:
Store at -20°C. Stable for one year after shipment.
Storage Buffer:
PBS with 0.02% sodium azide and 50% glycerol pH 7.3.
Aliquoting is unnecessary for -20°C storage

For technical support and original validation data for this product please contact:

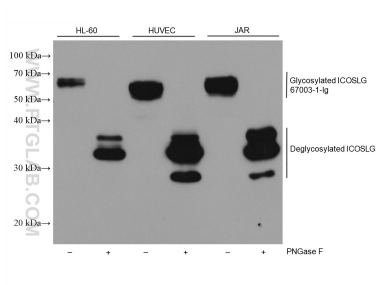
T: 4006900926

E: Proteintech-CN@ptglab.com

W: ptgcn.com

This product is exclusively available under Proteintech Group brand and is not available to purchase from any other manufacturer.

Selected Validation Data



Various lysates were subjected to SDS PAGE followed by western blot with 67003-1-Ig (ICOSLG antibody) at dilution of 1:10000 incubated at room temperature for 1.5 hours.