

For Research Use Only

Integrin Alpha 4 Monoclonal antibody



Catalog Number: 67040-1-Ig **1 Publications**

Basic Information

Catalog Number: 67040-1-Ig	GenBank Accession Number: BC156712	Purification Method: Protein A purification
Size: 2100 µg/ml	GeneID (NCBI): 3676	CloneNo.: 1B6A3
Source: Mouse	UNIPROT ID: P13612	Recommended Dilutions: WB 1:5000-1:50000
Isotype: IgG2a	Full Name: integrin, alpha 4 (antigen CD49D, alpha 4 subunit of VLA-4 receptor)	
Immunogen Catalog Number: AG28024	Calculated MW: 1032 aa, 115 kDa	
	Observed MW: 130-150 kDa	

Applications

Tested Applications: WB, ELISA	Positive Controls: WB : MOLT-4 cells, Raji cells, U-937 cells, NK-92 cells, THP-1 cells, Jurkat cells
Cited Applications: WB	
Species Specificity: Human	
Cited Species: human	

Background Information

ITGA4, also named as CD49D, belongs to the integrin alpha chain family. ITGA4 is a receptor for fibronectin, VCAM1 and MADCAM1. ITGA4 recognizes one or more domains within the alternatively spliced CS-1 and CS-5 regions of fibronectin. It recognizes the sequence Q-I-D-S in VCAM1. It recognizes the sequence L-D-T in MADCAM1. On activated endothelial cells ITGA4 triggers homotypic aggregation for most VLA-4-positive Leukocyte cell lines. It may also participate in cytolytic T-cell interactions with target cells.

Notable Publications

Author	Pubmed ID	Journal	Application
Tomofumi Yamamoto	34979567	Blood Adv	WB

Storage

Storage:
Store at -20°C. Stable for one year after shipment.
Storage Buffer:
PBS with 0.02% sodium azide and 50% glycerol pH 7.3.
Aliquoting is unnecessary for -20°C storage

For technical support and original validation data for this product please contact:

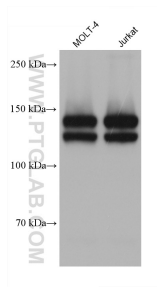
T: 4006900926

E: Proteintech-CN@ptglab.com

W: ptgcn.com

This product is exclusively available under Proteintech Group brand and is not available to purchase from any other manufacturer.

Selected Validation Data



Various lysates were subjected to SDS PAGE followed by western blot with 67040-1-Ig (Integrin Alpha 4 antibody) at dilution of 1:10000 incubated at room temperature for 1.5 hours.