

For Research Use Only

CES1 Monoclonal antibody

Catalog Number: 67079-1-Ig



Basic Information

| | | |
|---|---|---|
| Catalog Number: 67079-1-Ig | GenBank Accession Number: BC012418 | Purification Method: Protein G purification |
| Size: 900 µg/ml | GeneID (NCBI): 1066 | CloneNo.: 1C11C1 |
| Source: Mouse | UNIPROT ID: P23141 | Recommended Dilutions: WB 1:2000-1:10000 IHC 1:300-1:1200 IF 1:50-1:500 |
| Isotype: IgG1 | Full Name: carboxylesterase 1 (monocyte/macrophage serine esterase 1) | |
| Immunogen Catalog Number: AG10647 | Calculated MW: 566 aa, 62 kDa | |
| | Observed MW: 60-63 kDa | |

Applications

| | |
|--|---|
| Tested Applications: IF/ICC, IHC, WB, ELISA | Positive Controls: |
| Species Specificity: Human | WB: U-937 cells, THP-1 cells |
| Note-IHC: suggested antigen retrieval with TE buffer pH 9.0; (*) Alternatively, antigen retrieval may be performed with citrate buffer pH 6.0 | IHC: human liver tissue, human liver cancer tissue |
| | IF: HepG2 cells, |

Background Information

CES1(liver carboxylesterase 1) is also named as CES2, SES1 and belongs to the type-B carboxylesterase/lipase family. The deduced 567-amino acid protein contains a putative 18-amino acid signal peptide and a characteristic C-terminal endoplasmic reticulum retention signal (HXEL). It is the major hydrolytic enzyme responsible for the metabolism of numerous therapeutic agents as well as endogenous substrates. Western blot analysis demonstrated that CES1 is expressed in human liver microsomes (HLM) but not in human intestinal microsomes (HIM) (PMID:19185566).

Storage

Storage:
Store at -20°C. Stable for one year after shipment.
Storage Buffer:
PBS with 0.02% sodium azide and 50% glycerol pH 7.3.
Aliquoting is unnecessary for -20°C storage

For technical support and original validation data for this product please contact:

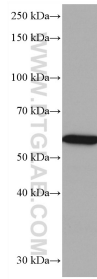
T: 4006900926

E: Proteintech-CN@ptglab.com

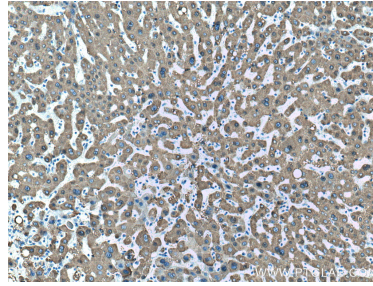
W: ptgcn.com

This product is exclusively available under Proteintech Group brand and is not available to purchase from any other manufacturer.

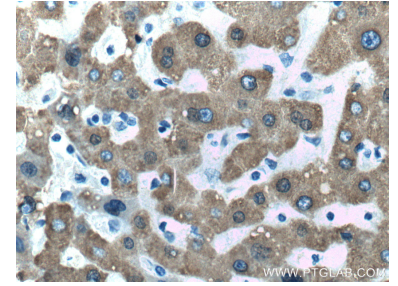
Selected Validation Data



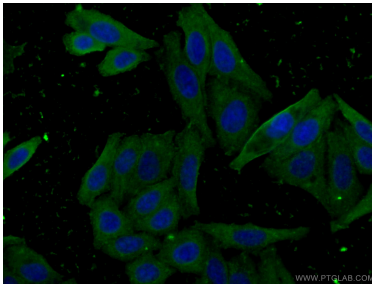
U-937 cells were subjected to SDS PAGE followed by western blot with 67079-1-Ig (CES1 antibody) at dilution of 1:5000 incubated at room temperature for 1.5 hours.



Immunohistochemical analysis of paraffin-embedded human liver tissue slide using 67079-1-Ig (CES1 antibody) at dilution of 1:600 (under 10x lens). Heat mediated antigen retrieval with Tris-EDTA buffer (pH 9.0).



Immunohistochemical analysis of paraffin-embedded human liver tissue slide using 67079-1-Ig (CES1 antibody) at dilution of 1:600 (under 40x lens). Heat mediated antigen retrieval with Tris-EDTA buffer (pH 9.0).



Immunofluorescent analysis of (-20°C Ethanol) fixed HepG2 cells using 67079-1-Ig (CES1 antibody) at dilution of 1:100 and CoraLite488-Conjugated AffiniPure Goat Anti-Mouse IgG(H+L).