

For Research Use Only

EPHB1 Monoclonal antibody

Catalog Number: 67080-1-Ig



Basic Information

Catalog Number: 67080-1-Ig	GenBank Accession Number: BC111744	Purification Method: Protein A purification
Size: 2200 µg/ml	GeneID (NCBI): 2047	CloneNo.: 1B7C12
Source: Mouse	UNIPROT ID: P54762	Recommended Dilutions: WB 1:1000-1:4000
Isotype: IgG2b	Full Name: EPH receptor B1	
Immunogen Catalog Number: AG16347	Calculated MW: 984 aa, 110 kDa	
	Observed MW: 110-120 kDa	

Applications

Tested Applications: WB, ELISA	Positive Controls: WB : mouse cerebellum tissue, mouse brain tissue, fetal human brain tissue
Species Specificity: Human, Mouse	

Background Information

EPHB1, also named as EPHT2, NET, HEK6 and ELK, belongs to the protein kinase superfamily, Tyr protein kinase family, and Ephrin receptor subfamily. It is a receptor for members of the ephrin-B family. EPHB1 binds to ephrin-B1, -B2 and -B3. EPHB1 may be involved in cell-cell interactions in the nervous system. EPHB1 catalyzes the reaction: ATP + a [protein]-L-tyrosine = ADP + a [protein]-L-tyrosine phosphate.

Storage

Storage:
Store at -20°C.
Storage Buffer:
PBS with 0.02% sodium azide and 50% glycerol pH 7.3.
Aliquoting is unnecessary for -20°C storage

For technical support and original validation data for this product please contact:

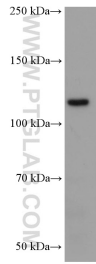
T: 4006900926

E: Proteintech-CN@ptglab.com

W: ptgcn.com

This product is exclusively available under Proteintech Group brand and is not available to purchase from any other manufacturer.

Selected Validation Data



mouse cerebellum tissue were subjected to SDS PAGE followed by western blot with 67080-1-Ig (EPHB1 antibody) at dilution of 1:2000 incubated at room temperature for 1.5 hours.